

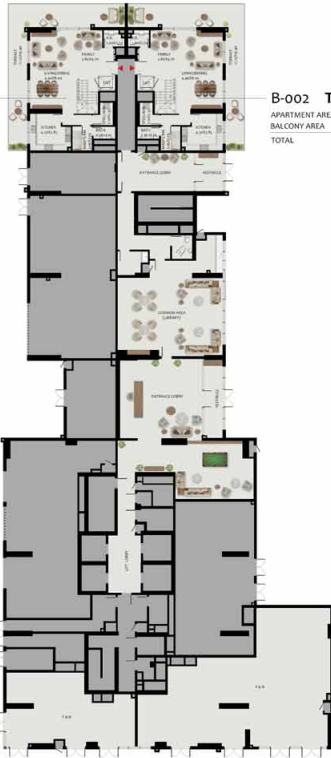
# Wasl Boulevard Park - Apartment

BOULEVARD PARK  
AT WASL GATE

## BUILDING 1B - GROUND FLOOR

### B-001 TYPE 3T-P-B LL

APARTMENT AREA	3551.98 SQ.FT	327.18 SQ.MT
BALCONY AREA	728.82 SQ.FT	67.21 SQ.MT
TOTAL	3280.80 SQ.FT	304.39 SQ.MT



### B-002 TYPE 3T-P-B LL

APARTMENT AREA	3550.71 SQ.FT	326.97 SQ.MT
BALCONY AREA	728.82 SQ.FT	67.21 SQ.MT
TOTAL	3279.53 SQ.FT	304.18 SQ.MT

### B-003 TYPE 4T-P-C LL

APARTMENT AREA	3288.91 SQ.FT	305.55 SQ.MT
BALCONY AREA	1166.81 SQ.FT	108.49 SQ.MT
TOTAL	4455.72 SQ.FT	413.95 SQ.MT



wasl

All room dimensions are in metric and measured to structural elements and exclude wall finishes and construction tolerances. Calculation of suite area is measured as the area bounded by the centerline of demising or party walls separating one unit from another unit, the exterior surface of all exterior walls and the exterior surface of the corridor wall on enclosing and abutting the unit. Calculation of Terrace area is measured as the area bounded by the centerlines of demising or party walls separating one unit from another unit, the outermost face of the enclosing guard and the external face of the site abutting the balcony. All materials, dimensions & drawings features and amenities are approximate at the time of printing. Information subject to change without notice. Actual suite areas may vary from the stated area. Drawings are not to scale. The developer reserves the right to make revisions.



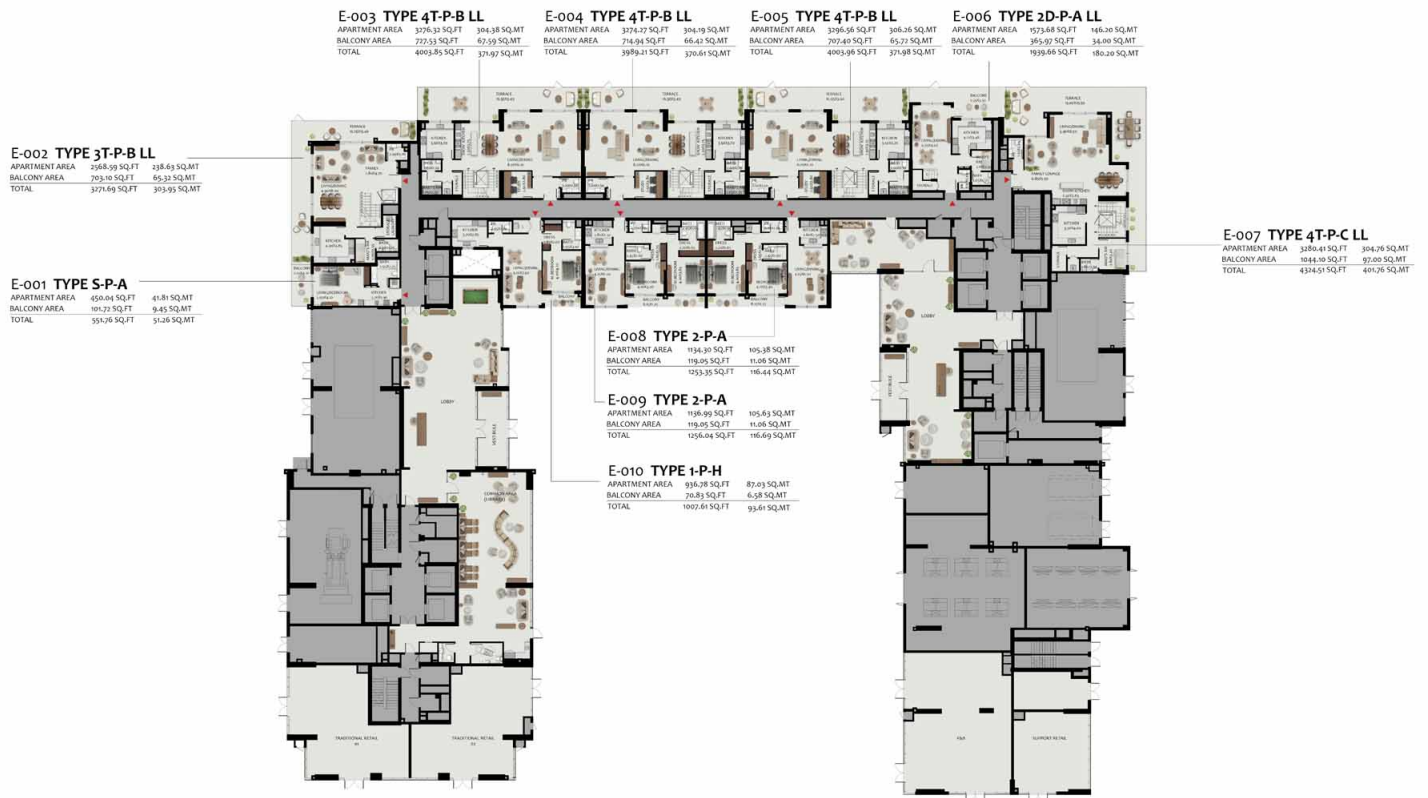
**C-001 TYPE 4T-P-C LL**

APARTMENT AREA	3,167.17 SQ.FT	303.53 SQ.MT
TERRACE AREA	1,217.72 SQ.FT	113.13 SQ.MT
TOTAL	4,384.89 SQ.FT	416.66 SQ.MT

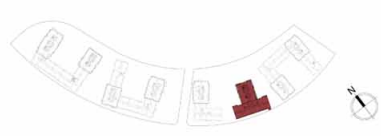
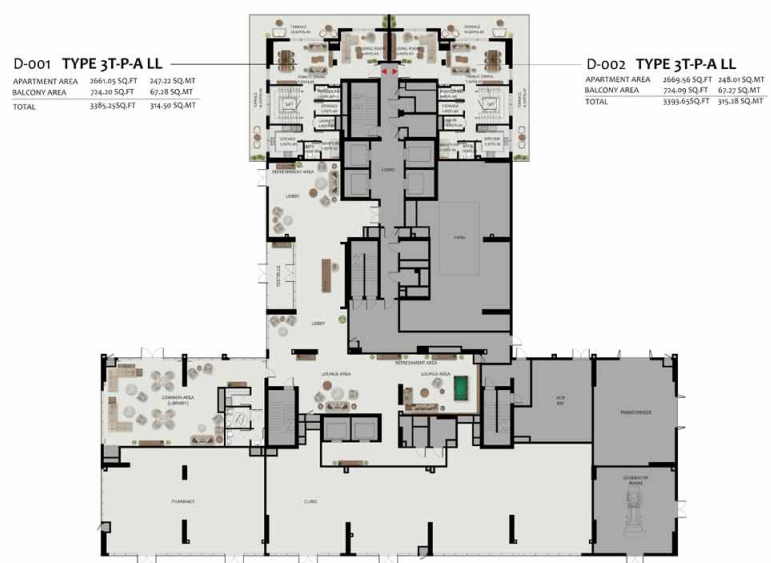


wasl

All room dimensions are in metric and measured to structural elements and exclude wall finishes and construction tolerances. Calculation of suite area is measured as the area bounded by the centerline of demising or party walls separating one unit from another unit, the exterior surface of all exterior walls and the exterior surface of the corridor wall on enclosing and abutting the unit. Calculation of Terrace area is measured as the area bounded by the centerlines of demising or party walls separating one unit from another unit, the outermost face of the enclosing guard and the external face of the site abutting the balcony. All materials, dimensions & drawings features and amenities are approximate at the time of printing. Information subject to change without notice. Actual suite areas may vary from the stated area. Drawings are not to scale. The developer reserves the right to make revisions



All room dimensions are in metric and measured to structural elements and exclude wall finishes and construction tolerances. Calculation of suite area is measured as the area bounded by the centerline of demising or party walls separating one unit from another unit, the exterior surface of all exterior walls and the exterior surface of the corridor wall on enclosing and abutting the unit. Calculation of Terrace area is measured as the area bounded by the centerlines of demising or party walls separating one unit from another unit, the outermost face of the enclosing guard and the external face of the site abutting the balcony. All materials, dimensions & drawings features and amenities are approximate at the time of printing. Information subject to change without notice. Actual suite areas may vary from the stated area. Drawings are not to scale. The developer reserves the right to make revisions



**wasi**

All room dimensions are in metric and measured to structural elements and exclude wall finishes and construction tolerances. Calculation of suite area is measured as the area bounded by the centerline of demising or party walls separating one unit from another unit, the exterior surface of all exterior walls and the exterior surface of the corridor wall on enclosing and abutting the unit. Calculation of Terrace area is measured as the area bounded by the centerlines of demising or party walls separating one unit from another unit, the outermost face of the enclosing guard and the external face of the site abutting the balcony. All materials, dimensions & drawings features and amenities are approximate at the time of printing. Information subject to change without notice. Actual suite areas may vary from the stated area. Drawings are not to scale. The developer reserves the right to make revisions

# BUILDING 1A - GROUND FLOOR

BOULEVARD PARK  
AT WASL GATE

## A-002 TYPE 4T-P-ALL

APARTMENT AREA 3153.05 SQ.FT 291.02 SQ.MT  
TERRACE AREA 193.23 SQ.FT 17.8 SQ.MT  
TOTAL 4064.28 SQ.FT 377.63 SQ.MT

## A-003 TYPE 3T-P-ALL

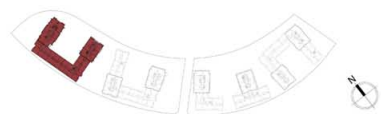
APARTMENT AREA 2660.19 SQ.FT 247.16 SQ.MT  
TERRACE AREA 256.39 SQ.FT 23.8 SQ.MT  
TOTAL 3416.58 SQ.FT 318.34 SQ.MT

## A-001 TYPE 4T-P-ALL

APARTMENT AREA 3151.35 SQ.FT 290.77 SQ.MT  
TERRACE AREA 198.54 SQ.FT 18.42 SQ.MT  
TOTAL 4081.89 SQ.FT 379.23 SQ.MT

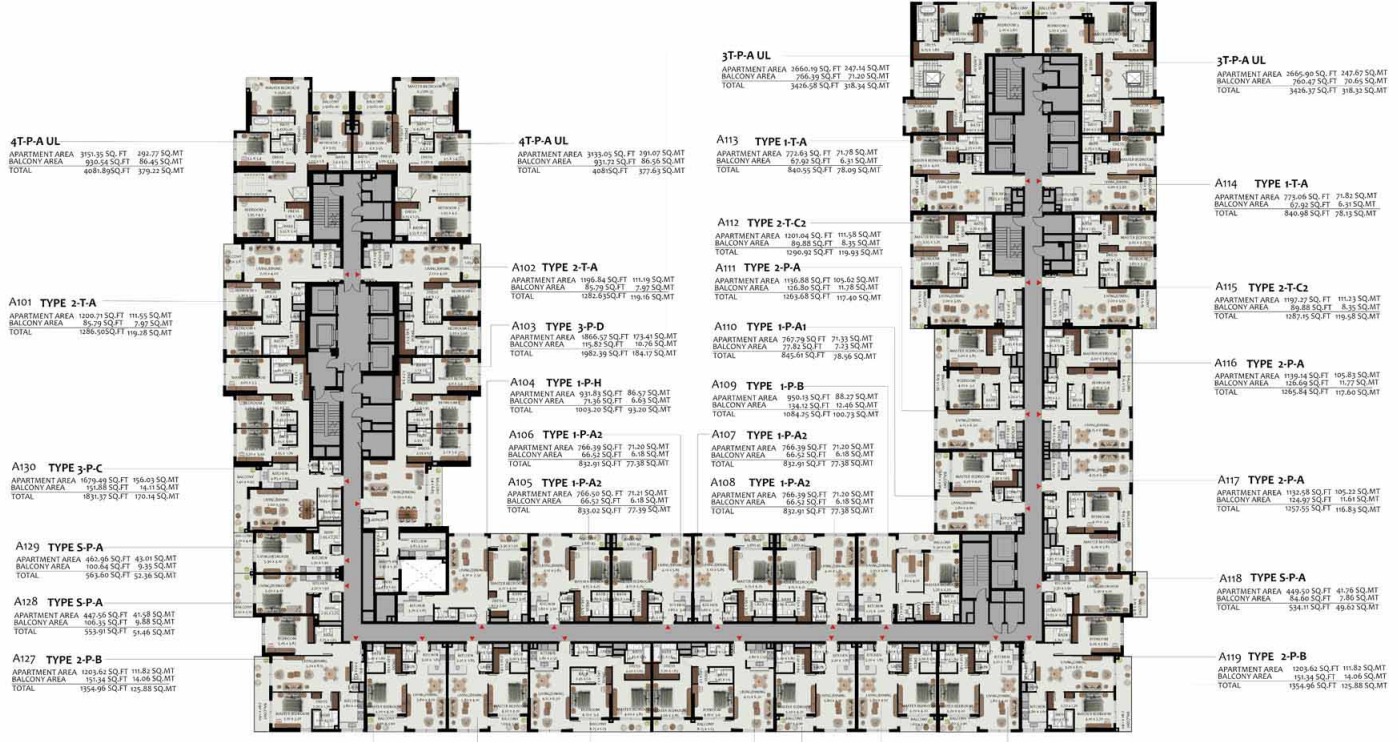
## A-004 TYPE 3T-P-ALL

APARTMENT AREA 2885.80 SQ.FT 267.62 SQ.MT  
TERRACE AREA 250.47 SQ.FT 23.35 SQ.MT  
TOTAL 3416.37 SQ.FT 318.32 SQ.MT

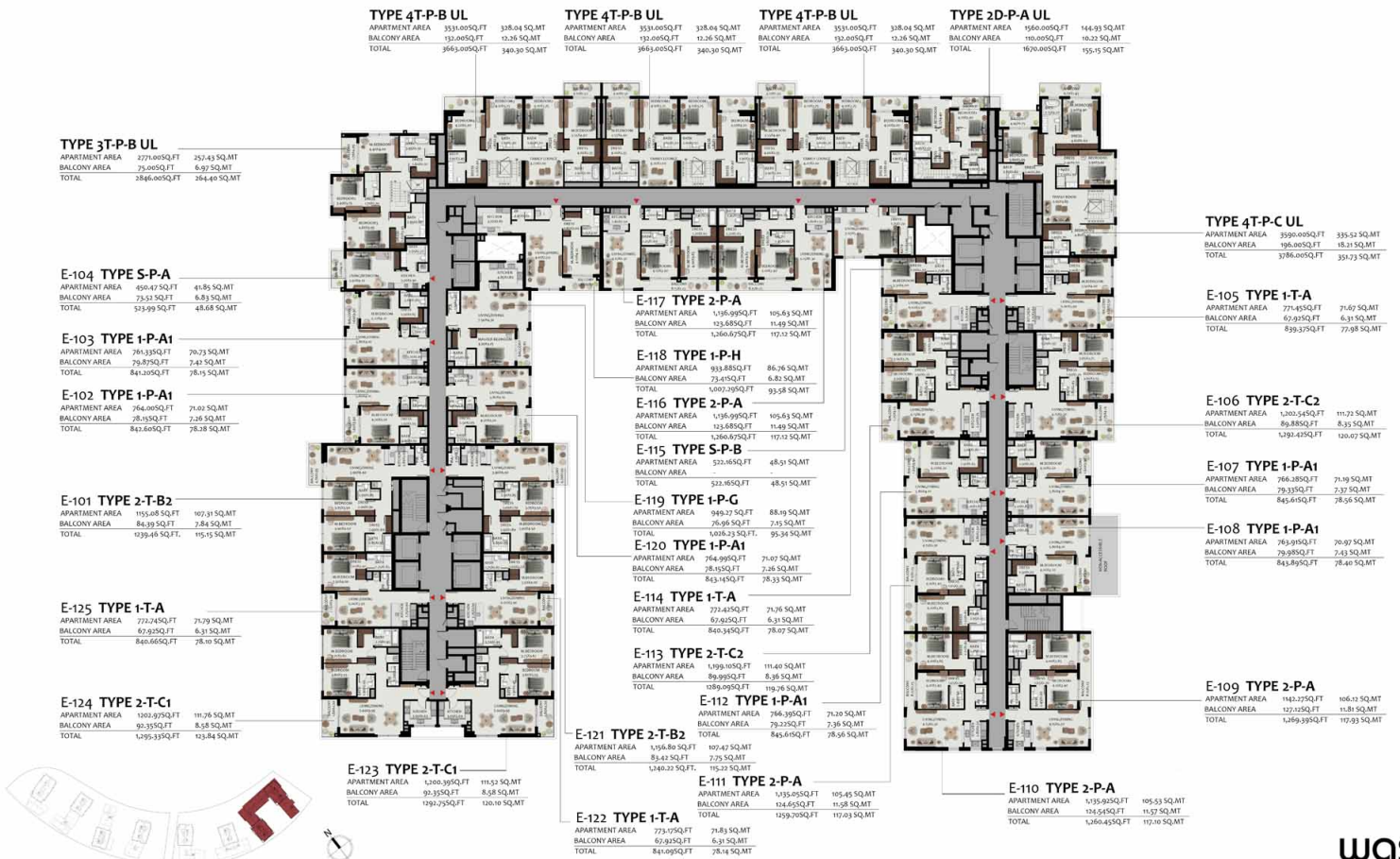


wasl

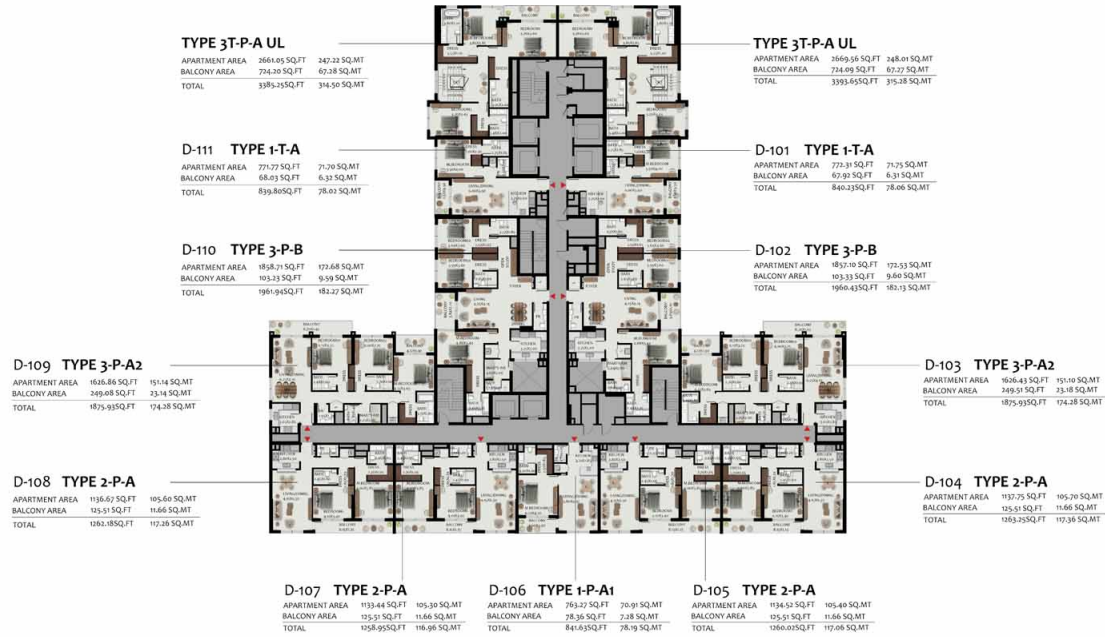
All room dimensions are in metric and measured to structural elements and exclude wall finishes and construction tolerances. Calculation of suite area is measured as the area bounded by the centerline of demising or party walls separating one unit from another unit, the exterior surface of all exterior walls and the exterior surface of the corridor wall on enclosing and abutting the unit. Calculation of Terrace area is measured as the area bounded by the centerlines of demising or party walls separating one unit from another unit, the outermost face of the enclosing guard and the external face of the site abutting the balcony. All materials, dimensions & drawings features and amenities are approximate at the time of printing. Information subject to change without notice. Actual suite areas may vary from the stated area. Drawings are not to scale. The developer reserves the right to make revisions



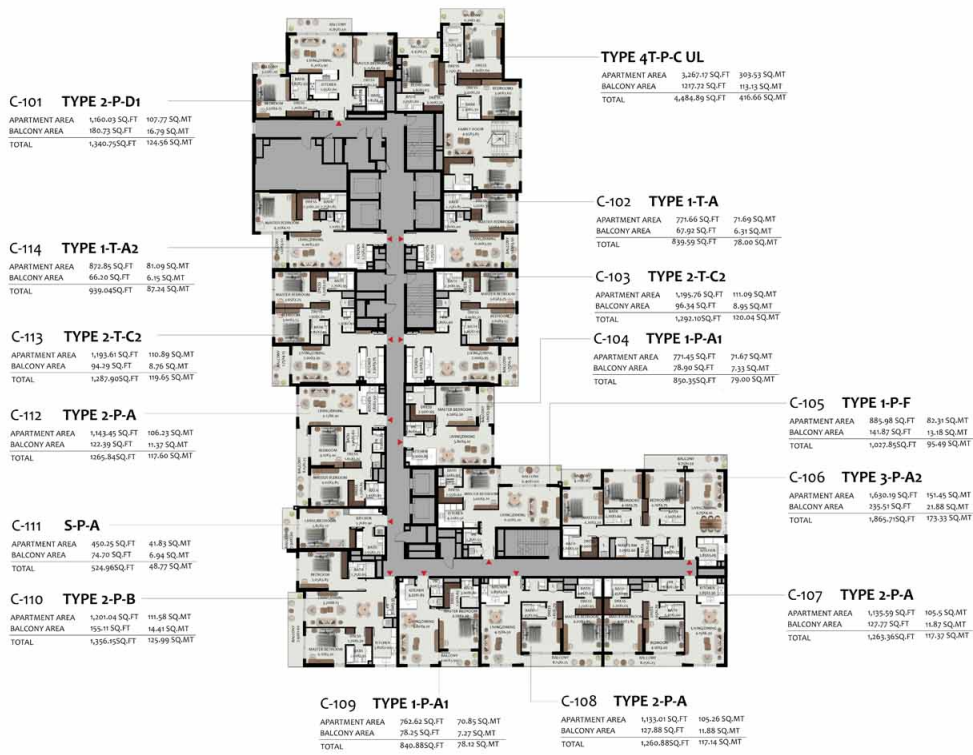
All room dimensions are in metric and measured to structural elements and exclude wall finishes and construction tolerances. Calculation of suite area is measured as the area bounded by the centerline of demising or party walls separating one unit from another unit, the exterior surface of all exterior walls and the exterior surface of the corridor wall on enclosing and abutting the unit. Calculation of Terrace area is measured as the area bounded by the centerlines of demising or party walls separating one unit from another unit, the outermost face of the enclosing guard and the external face of the site abutting the balcony. All materials, dimensions & drawings features and amenities are approximate at the time of printing. Information subject to change without notice. Actual suite areas may vary from the stated area. Drawings are not to scale. The developer reserves the right to make revisions.



All room dimensions are in metric and measured to structural elements and exclude wall finishes and construction tolerances. Calculation of suite area is measured as the area bounded by the centerline of demising or party walls separating one unit from another unit, the exterior surface of all exterior walls and the exterior surface of the corridor wall on enclosing and abutting the unit. Calculation of Terrace area is measured as the area bounded by the centerlines of demising or party walls separating one unit from another unit, the outermost face of the enclosing guard and the external face of the site abutting the balcony. All materials, dimensions & drawings features and amenities are approximate at the time of printing. Information subject to change without notice. Actual suite areas may vary from the stated area. Drawings are not to scale. The developer reserves the right to make revisions



All room dimensions are in metric and measured to structural elements and exclude wall finishes and construction tolerances. Calculation of suite area is measured as the area bounded by the centerline of demising or party walls separating one unit from another unit, the exterior surface of all exterior walls and the exterior surface of the corridor wall on enclosing and abutting the unit. Calculation of Terrace area is measured as the area bounded by the centerlines of demising or party walls separating one unit from another unit, the outermost face of the enclosing guard and the external face of the site abutting the balcony. All materials, dimensions & drawings features and amenities are approximate at the time of printing. Information subject to change without notice. Actual suite areas may vary from the stated area. Drawings are not to scale. The developer reserves the right to make revisions



All room dimensions are in metric and measured to structural elements and exclude wall finishes and construction tolerances. Calculation of suite area is measured as the area bounded by the centerline of demising or party walls separating one unit from another unit, the exterior surface of all exterior walls and the exterior surface of the corridor wall on enclosing and abutting the unit. Calculation of Terrace area is measured as the area bounded by the centerlines of demising or party walls separating one unit from another unit, the outermost face of the enclosing guard and the external face of the site abutting the balcony. All materials, dimensions & drawings features and amenities are approximate at the time of printing. Information subject to change without notice. Actual suite areas may vary from the stated area. Drawings are not to scale. The developer reserves the right to make revisions

**TYPE 3T-P-B UL**

APARTMENT AREA 2740 SQ.FT. 254-55 SQ.MT  
BALCONY AREA 426 SQ.FT. 39.58 SQ.MT  
TOTAL 3166 SQ.FT. 294-13 SQ.MT

**TYPE 3T-P-B UL**

APARTMENT AREA 2740 SQ.FT. 254-55 SQ.MT  
BALCONY AREA 426 SQ.FT. 39.58 SQ.MT  
TOTAL 3166 SQ.FT. 294-13 SQ.MT

**B-105 TYPE S-P-A**

APARTMENT AREA 449.39 SQ.FT. 41.75 SQ.MT  
BALCONY AREA 74.38 SQ.FT. 6.91 SQ.MT  
TOTAL 523.77 SQ.FT. 48.66 SQ.MT

**B-104 TYPE 1-P-A1**

APARTMENT AREA 261.05 SQ.FT. 20.86 SQ.MT  
BALCONY AREA 77.39 SQ.FT. 7.19 SQ.MT  
TOTAL 839.48 SQ.FT. 77.99 SQ.MT

**B-103 TYPE 1-P-A1**

APARTMENT AREA 375.04 SQ.FT. 30.80 SQ.MT  
BALCONY AREA 77.39 SQ.FT. 7.19 SQ.MT  
TOTAL 840.45 SQ.FT. 78.08 SQ.MT

**B-102 TYPE 1-P-A1**

APARTMENT AREA 760.65 SQ.FT. 70.85 SQ.MT  
BALCONY AREA 77.38 SQ.FT. 7.19 SQ.MT  
TOTAL 839.86 SQ.FT. 78.05 SQ.MT

**B-101 TYPE 2-T-B2**

APARTMENT AREA 1159.72 SQ.FT. 107.20 SQ.MT  
BALCONY AREA 79.22 SQ.FT. 7.36 SQ.MT  
TOTAL 1238.90 SQ.FT. 115.06 SQ.MT

**B-131 TYPE 1-TA**

APARTMENT AREA 772.63 SQ.FT. 71.78 SQ.MT  
BALCONY AREA 67.92 SQ.FT. 6.31 SQ.MT  
TOTAL 840.55 SQ.FT. 78.09 SQ.MT

**B-130 TYPE 2-P-C**

APARTMENT AREA 1614.85 SQ.FT. 151.16 SQ.MT  
BALCONY AREA 86.66 SQ.FT. 8.33 SQ.MT  
TOTAL 1546.91 SQ.FT. 143.49 SQ.MT

**B-106 TYPE S-P-A**

APARTMENT AREA 453.38 SQ.FT. 41.92 SQ.MT  
BALCONY AREA 79.01 SQ.FT. 7.34 SQ.MT  
TOTAL 533.39 SQ.FT. 49.46 SQ.MT

**B-107 TYPE 2-P-A**

APARTMENT AREA 1139.04 SQ.FT. 105.82 SQ.MT  
BALCONY AREA 123.49 SQ.FT. 11.43 SQ.MT  
TOTAL 1262.07 SQ.FT. 117.25 SQ.MT

**B-108 TYPE 1-P-A1**

APARTMENT AREA 755.31 SQ.FT. 71.09 SQ.MT  
BALCONY AREA 75.13 SQ.FT. 6.98 SQ.MT  
TOTAL 840.34 SQ.FT. 78.07 SQ.MT

**B-109 TYPE 1-P-E**

APARTMENT AREA 1096.83 SQ.FT. 100.97 SQ.MT  
BALCONY AREA 71.36 SQ.FT. 6.63 SQ.MT  
TOTAL 1158.20 SQ.FT. 107.60 SQ.MT

**B-110 TYPE 1-P-C**

APARTMENT AREA 879.41 SQ.FT. 81.20 SQ.MT  
BALCONY AREA 113.27 SQ.FT. 10.57 SQ.MT  
TOTAL 993.19 SQ.FT. 92.27 SQ.MT

**B-111 TYPE 2-P-A**

APARTMENT AREA 1338.39 SQ.FT. 123.26 SQ.MT  
BALCONY AREA 121.96 SQ.FT. 11.33 SQ.MT  
TOTAL 1260.35 SQ.FT. 117.09 SQ.MT

**B-113 TYPE 1-P-A2**

APARTMENT AREA 772.85 SQ.FT. 71.80 SQ.MT  
BALCONY AREA 64.48 SQ.FT. 5.99 SQ.MT  
TOTAL 837.32 SQ.FT. 77.79 SQ.MT

**B-112 TYPE 1-P-A2**

APARTMENT AREA 772.85 SQ.FT. 71.80 SQ.MT  
BALCONY AREA 64.48 SQ.FT. 5.99 SQ.MT  
TOTAL 837.32 SQ.FT. 77.79 SQ.MT

**TYPE 4T-P-C UL**

APARTMENT AREA 3590 SQ.FT. 333-57 SQ.MT  
BALCONY AREA 1965 SQ.FT. 182.09 SQ.MT  
TOTAL 3786 SQ.FT. 351-73 SQ.MT

**B-117 TYPE 1-TA**

APARTMENT AREA 775.21 SQ.FT. 72.03 SQ.MT  
BALCONY AREA 66.31 SQ.FT. 6.16 SQ.MT  
TOTAL 841.52 SQ.FT. 78.18 SQ.MT

**B-116 TYPE 2-T-C2**

APARTMENT AREA 1205.56 SQ.FT. 112.00 SQ.MT  
BALCONY AREA 87.83 SQ.FT. 8.16 SQ.MT  
TOTAL 1293.39 SQ.FT. 120.16 SQ.MT

**B-115 TYPE 1-P-G**

APARTMENT AREA 963.49 SQ.FT. 89.53 SQ.MT  
BALCONY AREA 74.27 SQ.FT. 6.90 SQ.MT  
TOTAL 1037.96 SQ.FT. 96.43 SQ.MT

**B-114 TYPE 1-P-H**

APARTMENT AREA 991.88 SQ.FT. 92.01 SQ.MT  
BALCONY AREA 69.85 SQ.FT. 6.49 SQ.MT  
TOTAL 1066.53 SQ.FT. 99.51 SQ.MT

**B-118 TYPE 2-P-D2**

APARTMENT AREA 1588.44 SQ.FT. 147.20 SQ.MT  
BALCONY AREA 195.58 SQ.FT. 18.17 SQ.MT  
TOTAL 1484.02 SQ.FT. 137.87 SQ.MT

**B-119 TYPE 1-T-A2**

APARTMENT AREA 870.91 SQ.FT. 80.91 SQ.MT  
BALCONY AREA 68.46 SQ.FT. 6.36 SQ.MT  
TOTAL 939.37 SQ.FT. 87.27 SQ.MT

**B-120 TYPE 2-T-C2**

APARTMENT AREA 1520.47 SQ.FT. 141.63 SQ.MT  
BALCONY AREA 89.88 SQ.FT. 8.35 SQ.MT  
TOTAL 1593.35 SQ.FT. 149.97 SQ.MT

**B-121 TYPE 2-P-A**

APARTMENT AREA 1159.68 SQ.FT. 107.88 SQ.MT  
BALCONY AREA 124.75 SQ.FT. 11.59 SQ.MT  
TOTAL 1264.44 SQ.FT. 117.47 SQ.MT

**B-122 TYPE S-P-A**

APARTMENT AREA 449.58 SQ.FT. 41.73 SQ.MT  
BALCONY AREA 84.82 SQ.FT. 7.88 SQ.MT  
TOTAL 534.00 SQ.FT. 49.61 SQ.MT

**B-123 TYPE 2-P-B**

APARTMENT AREA 1203.51 SQ.FT. 111.81 SQ.MT  
BALCONY AREA 150.05 SQ.FT. 13.94 SQ.MT  
TOTAL 1353.56 SQ.FT. 125.75 SQ.MT

**B-129 TYPE 1-P-D**

APARTMENT AREA 852.28 SQ.FT. 79.49 SQ.MT  
BALCONY AREA 127.88 SQ.FT. 11.89 SQ.MT  
TOTAL 985.76 SQ.FT. 91.58 SQ.MT

**B-127 TYPE 2-P-A**

APARTMENT AREA 1461.51 SQ.FT. 135.91 SQ.MT  
BALCONY AREA 121.52 SQ.FT. 11.39 SQ.MT  
TOTAL 1583.64 SQ.FT. 147.31 SQ.MT

**B-125 TYPE 1-P-A1**

APARTMENT AREA 740.95 SQ.FT. 69.58 SQ.MT  
BALCONY AREA 72.85 SQ.FT. 6.73 SQ.MT  
TOTAL 840.77 SQ.FT. 78.11 SQ.MT

**B-124 TYPE 1-P-A1**

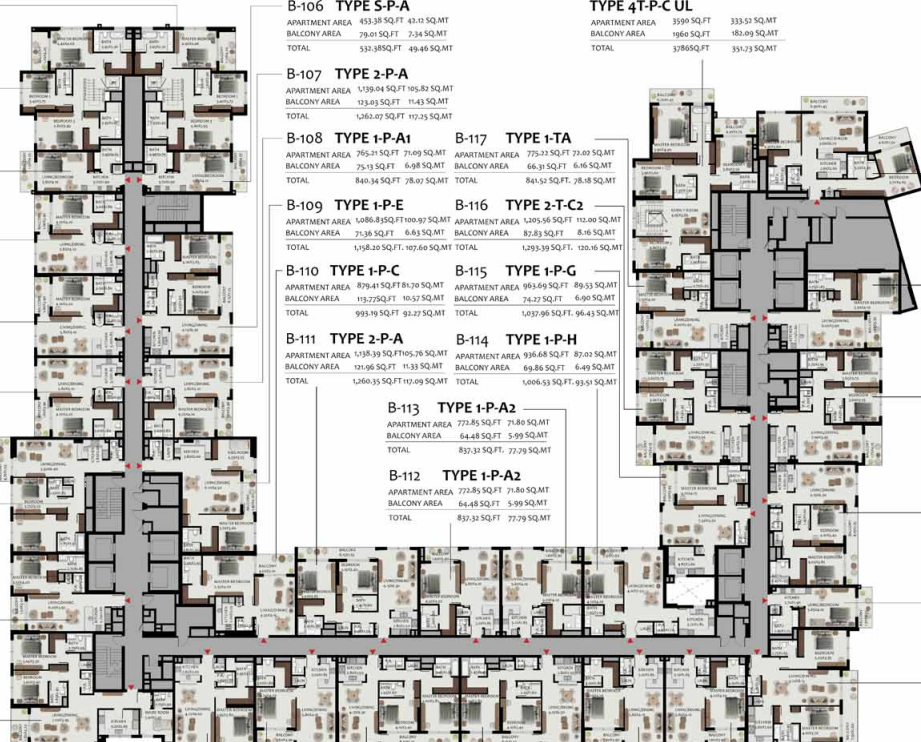
APARTMENT AREA 740.95 SQ.FT. 69.58 SQ.MT  
BALCONY AREA 72.93 SQ.FT. 6.73 SQ.MT  
TOTAL 840.88 SQ.FT. 78.12 SQ.MT

**B-128 TYPE 1-P-A1**

APARTMENT AREA 754.95 SQ.FT. 70.88 SQ.MT  
BALCONY AREA 80.41 SQ.FT. 7.47 SQ.MT  
TOTAL 843.35 SQ.FT. 78.35 SQ.MT

**B-126 TYPE 2-P-A**

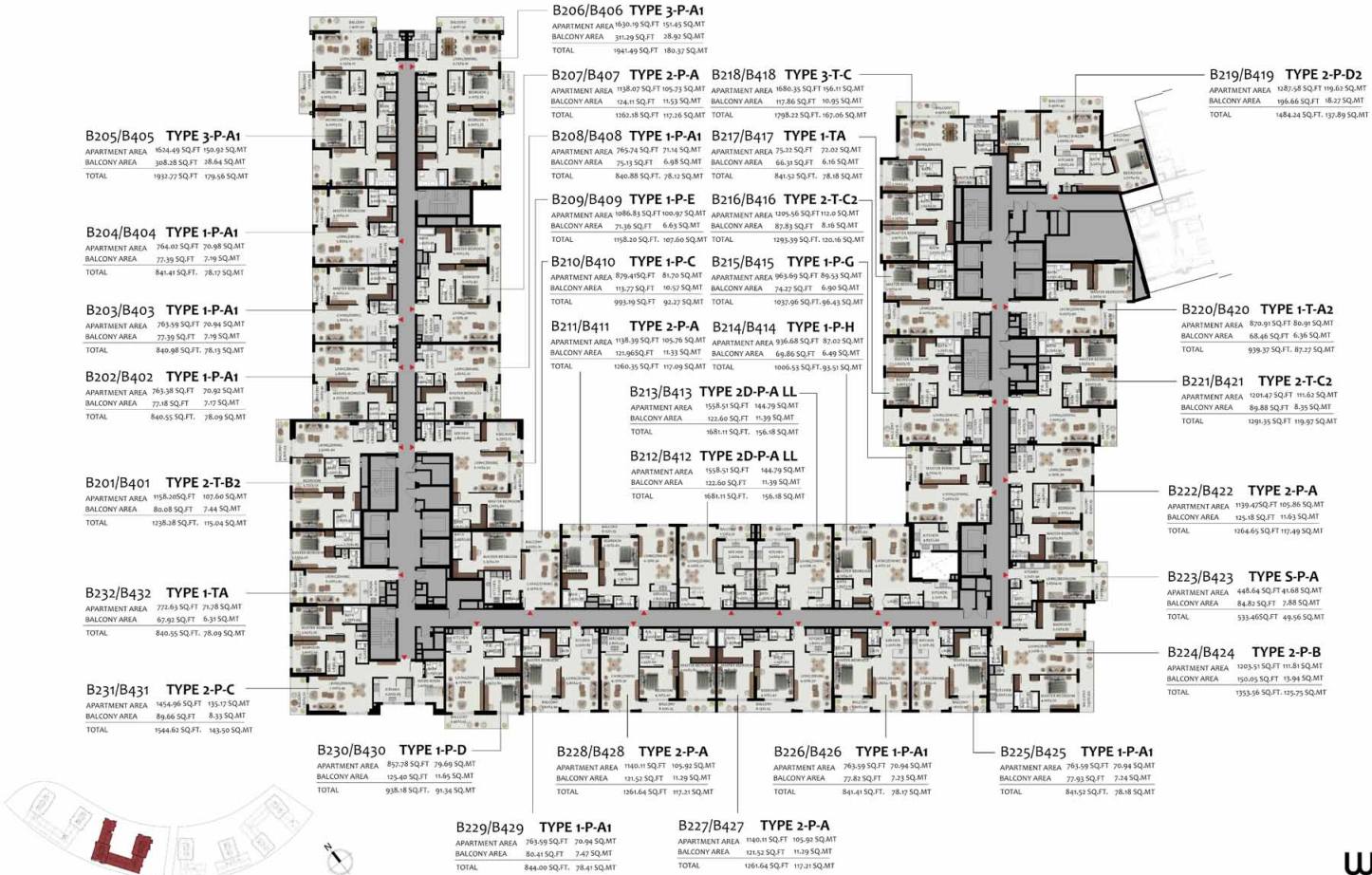
APARTMENT AREA 1140.11 SQ.FT. 105.92 SQ.MT  
BALCONY AREA 123.52 SQ.FT. 11.39 SQ.MT  
TOTAL 1263.64 SQ.FT. 117.31 SQ.MT



All room dimensions are in metric and measured to structural elements and exclude wall finishes and construction tolerances. Calculation of suite area is measured as the area bounded by the centerline of demising or party walls separating one unit from another unit. The exterior surface of all exterior walls and the exterior surface of the corridor wall on enclosing and abutting the unit. Calculation of Terrace area is measured as the area bounded by the centerlines of demising or party walls separating one unit from another unit, the outermost face of the enclosing guard and the external face of the site abutting the balcony. All materials, dimensions & drawings features and amenities are approximate at the time of printing. Information subject to change without notice. Actual suite areas may vary from the stated area. Drawings are not to scale. The developer reserves the right to make revisions



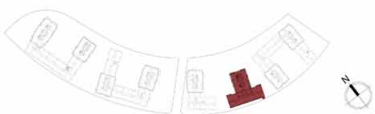
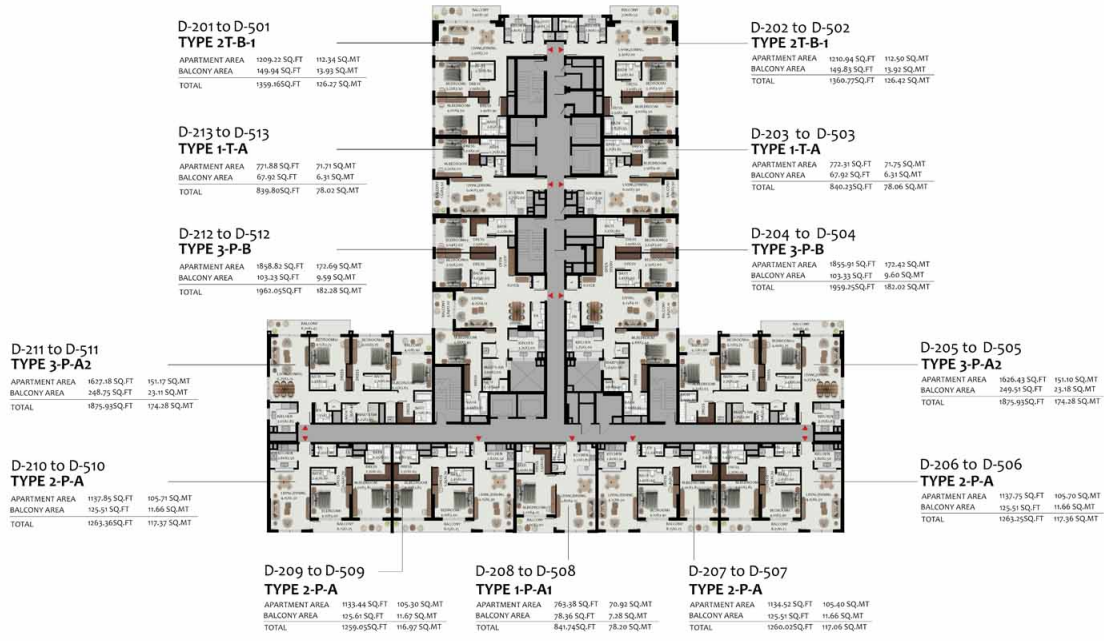




All room dimensions are in metric and measured to structural elements and exclude wall finishes and construction tolerances. Calculation of suite area is measured as the area bounded by the centerline of demising or party walls separating one unit from another unit, the exterior surface of all exterior walls and the exterior surface of the corridor wall on enclosing and abutting the unit. Calculation of Terrace area is measured as the area bounded by the centerlines of demising or party walls separating one unit from another unit, the outermost face of the enclosing guard and the external face of the site abutting the balcony. All materials, dimensions & drawings features and amenities are approximate at the time of printing. Information subject to change without notice. Actual suite areas may vary from the stated area. Drawings are not to scale. The developer reserves the right to make revisions

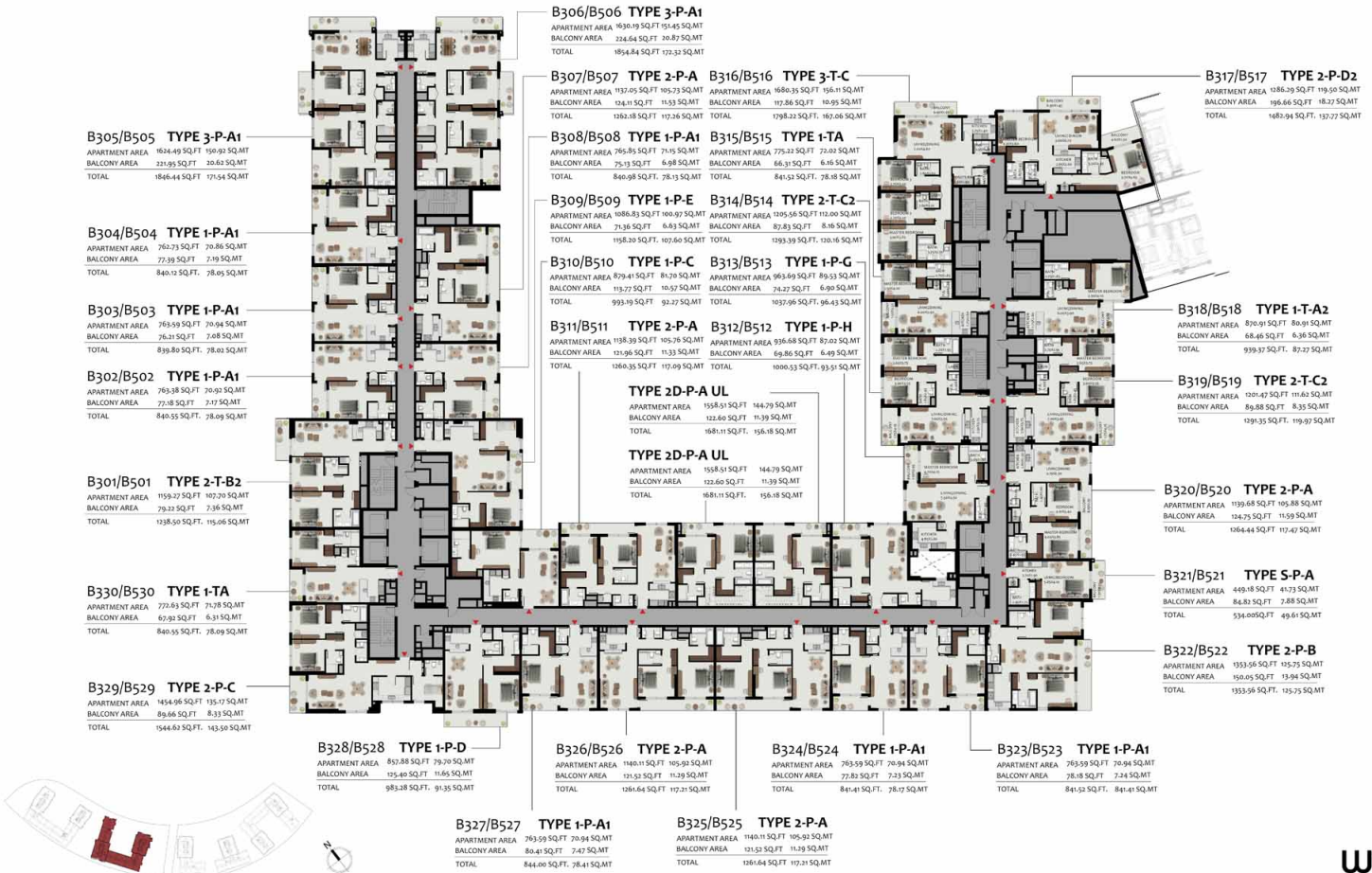


All room dimensions are in metric and measured to structural elements and exclude wall finishes and construction tolerances. Calculation of suite area is measured as the area bounded by the centerline of demising or party walls separating one unit from another unit, the exterior surface of all exterior walls and the exterior surface of the corridor wall on enclosing and abutting the unit. Calculation of Terrace area is measured as the area bounded by the centerlines of demising or party walls separating one unit from another unit, the outermost face of the enclosing guard and the external face of the site abutting the balcony. All materials, dimensions & drawings features and amenities are approximate at the time of printing. Information subject to change without notice. Actual suite areas may vary from the stated area. Drawings are not to scale. The developer reserves the right to make revisions

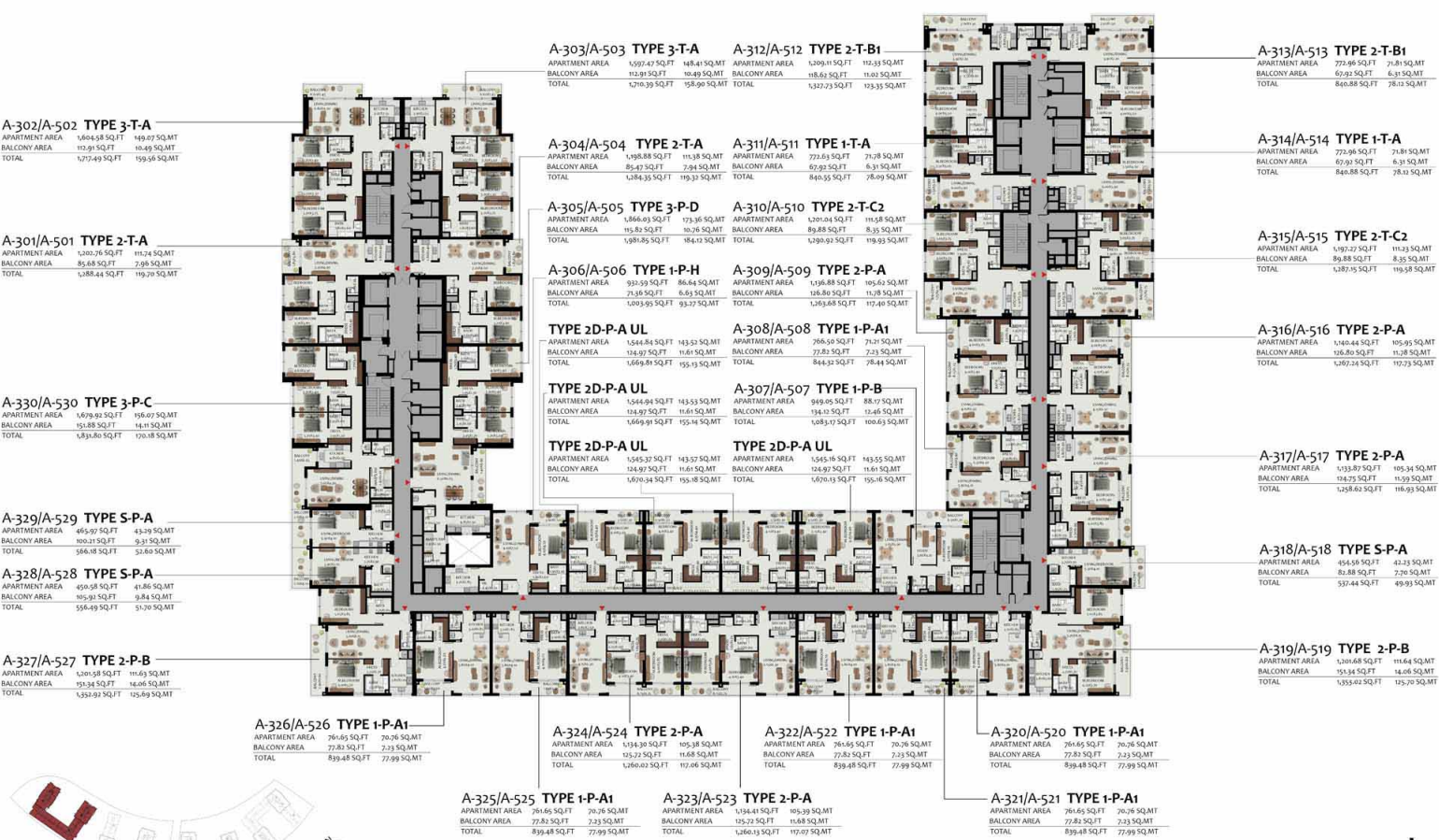


All room dimensions are in metric and measured to structural elements and exclude wall finishes and construction tolerances. Calculation of suite area is measured as the area bounded by the centerline of demising or party walls separating one unit from another unit, the exterior surface of all exterior walls and the exterior surface of the corridor wall on enclosing and abutting the unit. Calculation of Terrace area is measured as the area bounded by the centerlines of demising or party walls separating one unit from another unit, the outermost face of the enclosing guard and the external face of the site abutting the balcony. All materials, dimensions & drawings features and amenities are approximate at the time of printing. Information subject to change without notice. Actual suite areas may vary from the stated area. Drawings are not to scale. The developer reserves the right to make revisions

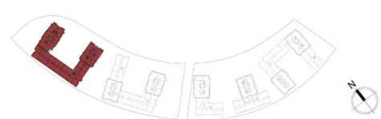
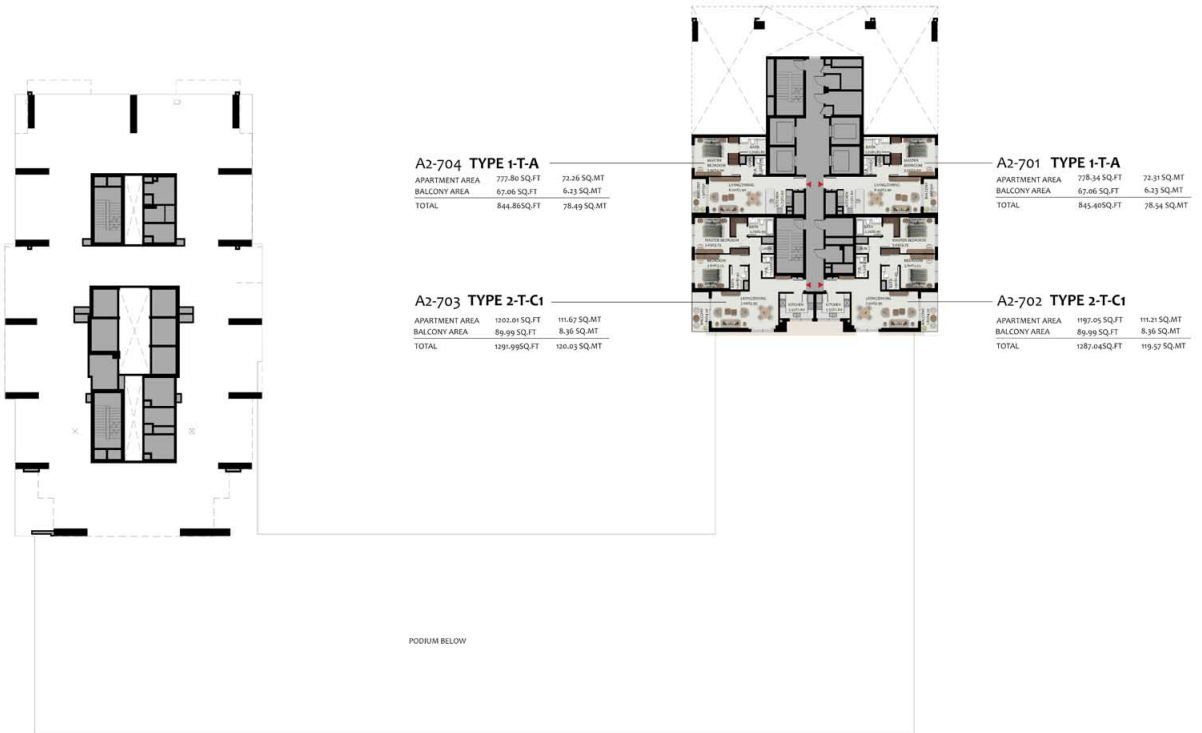




All room dimensions are in metric and measured to structural elements and exclude wall finishes and construction tolerances. Calculation of suite area is measured as the area bounded by the centerline of demising or party walls separating one unit from another unit, the exterior surface of all exterior walls and the exterior surface of the corridor wall on enclosing and abutting the unit. Calculation of Terrace area is measured as the area bounded by the centerlines of demising or party walls separating one unit from another unit, the outmost face of the enclosing guard and the external face of the site abutting the balcony. All materials, dimensions & drawings features and amenities are approximate at the time of printing. Information subject to change without notice. Actual suite areas may vary from the stated area. Drawings are not to scale. The developer reserves the right to make revisions.

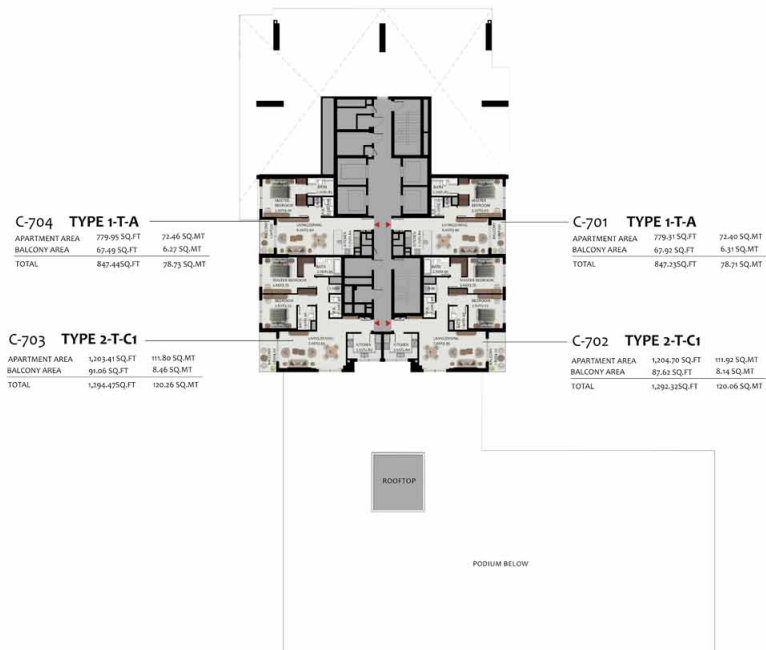


All room dimensions are in metric and measured to structural elements and exclude wall finishes and construction tolerances. Calculation of suite area is measured as the area bounded by the centerline of demising or party walls separating one unit from another unit, the exterior surface of all exterior walls and the exterior surface of the corridor wall on enclosing and abutting the unit. Calculation of Terrace area is measured as the area bounded by the centerlines of demising or party walls separating one unit from another unit, the outermost face of the enclosing guard and the external face of the site abutting the balcony. All materials, dimensions & drawings features and amenities are approximate at the time of printing. Information subject to change without notice. Actual suite areas may vary from the stated area. Drawings are not to scale. The developer reserves the right to make revisions



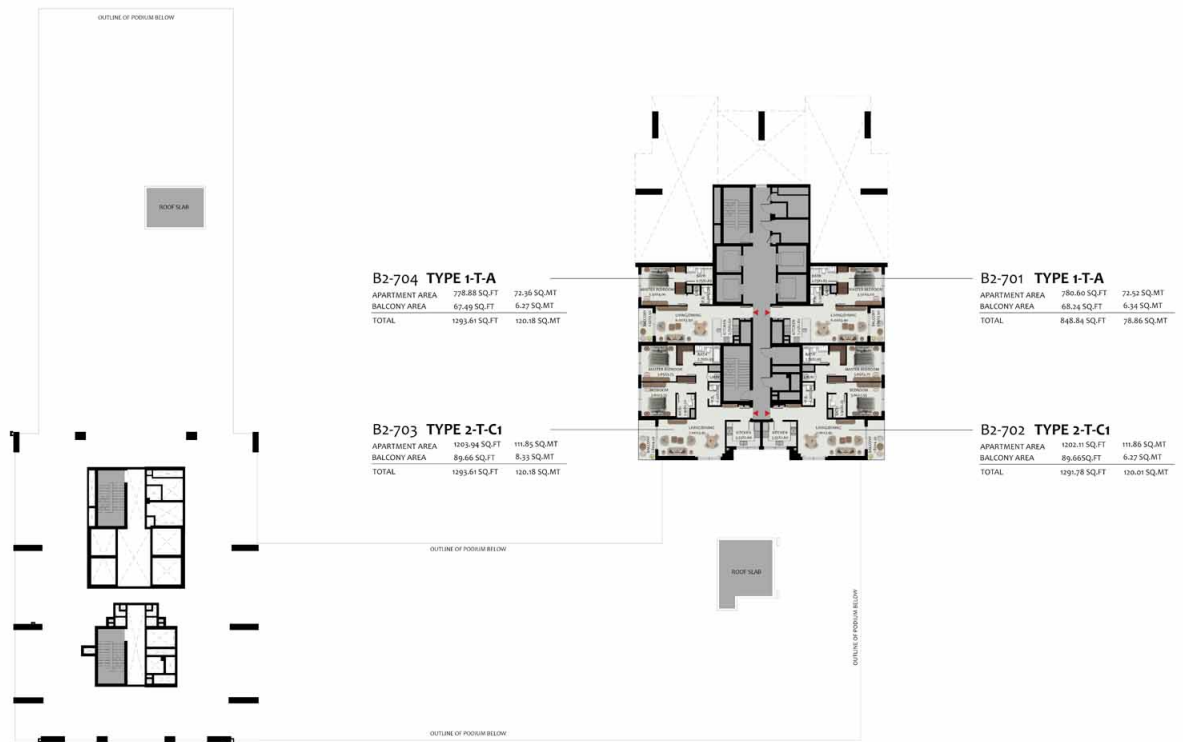
wasl

All room dimensions are in metric and measured to structural elements and exclude wall finishes and construction tolerances. Calculation of suite area is measured as the area bounded by the centerline of demising or party walls separating one unit from another unit, the exterior surface of all exterior walls and the exterior surface of the corridor wall on enclosing and abutting the unit. Calculation of Terrace area is measured as the area bounded by the centerlines of demising or party walls separating one unit from another unit, the outermost face of the enclosing guard and the external face of the site abutting the balcony. All materials, dimensions & drawings features and amenities are approximate at the time of printing. Information subject to change without notice. Actual suite areas may vary from the stated area. Drawings are not to scale. The developer reserves the right to make revisions



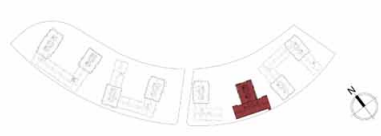
**wasi**

All room dimensions are in metric and measured to structural elements and exclude wall finishes and construction tolerances. Calculation of suite area is measured as the area bounded by the centerline of demising or party walls separating one unit from another unit, the exterior surface of all exterior walls and the exterior surface of the corridor wall on enclosing and abutting the unit. Calculation of Terrace area is measured as the area bounded by the centerlines of demising or party walls separating one unit from another unit, the outermost face of the enclosing guard and the external face of the site abutting the balcony. All materials, dimensions & drawings features and amenities are approximate at the time of printing. Information subject to change without notice. Actual suite areas may vary from the stated area. Drawings are not to scale. The developer reserves the right to make revisions.



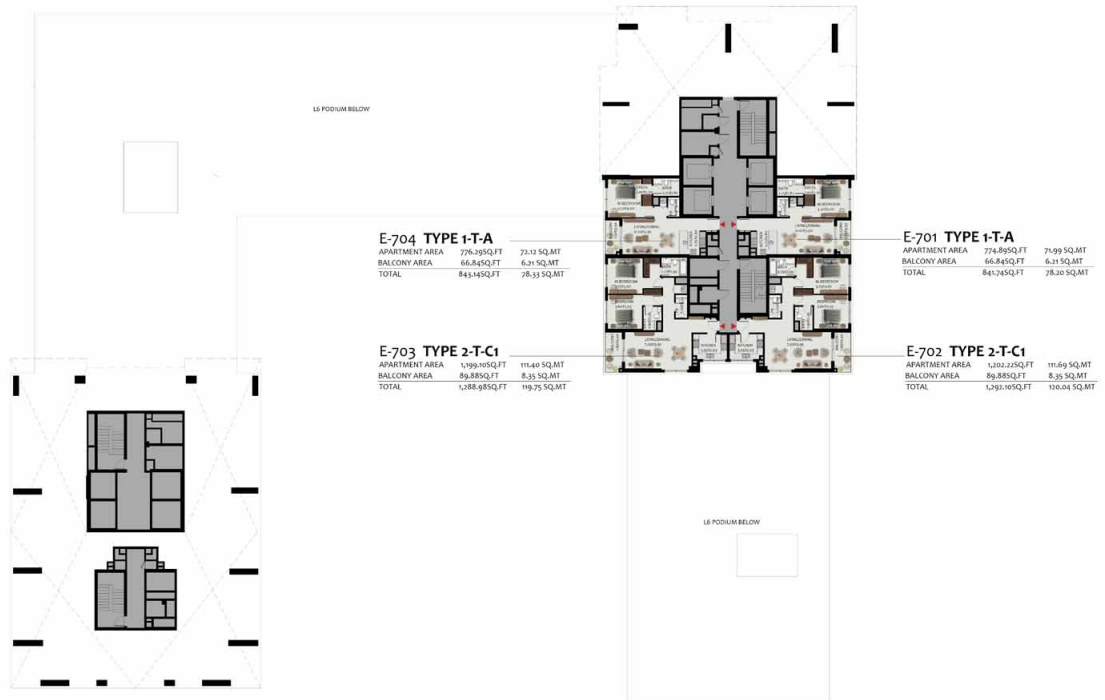
**wasl**

All room dimensions are in metric and measured to structural elements and exclude wall finishes and construction tolerances. Calculation of suite area is measured as the area bounded by the centerline of demising or party walls separating one unit from another unit, the exterior surface of all exterior walls and the exterior surface of the corridor wall on enclosing and abutting the unit. Calculation of Terrace area is measured as the area bounded by the centerlines of demising or party walls separating one unit from another unit, the outermost face of the enclosing guard and the external face of the site abutting the balcony. All materials, dimensions & drawings features and amenities are approximate at the time of printing. Information subject to change without notice. Actual suite areas may vary from the stated area. The developer reserves the right to make revisions.



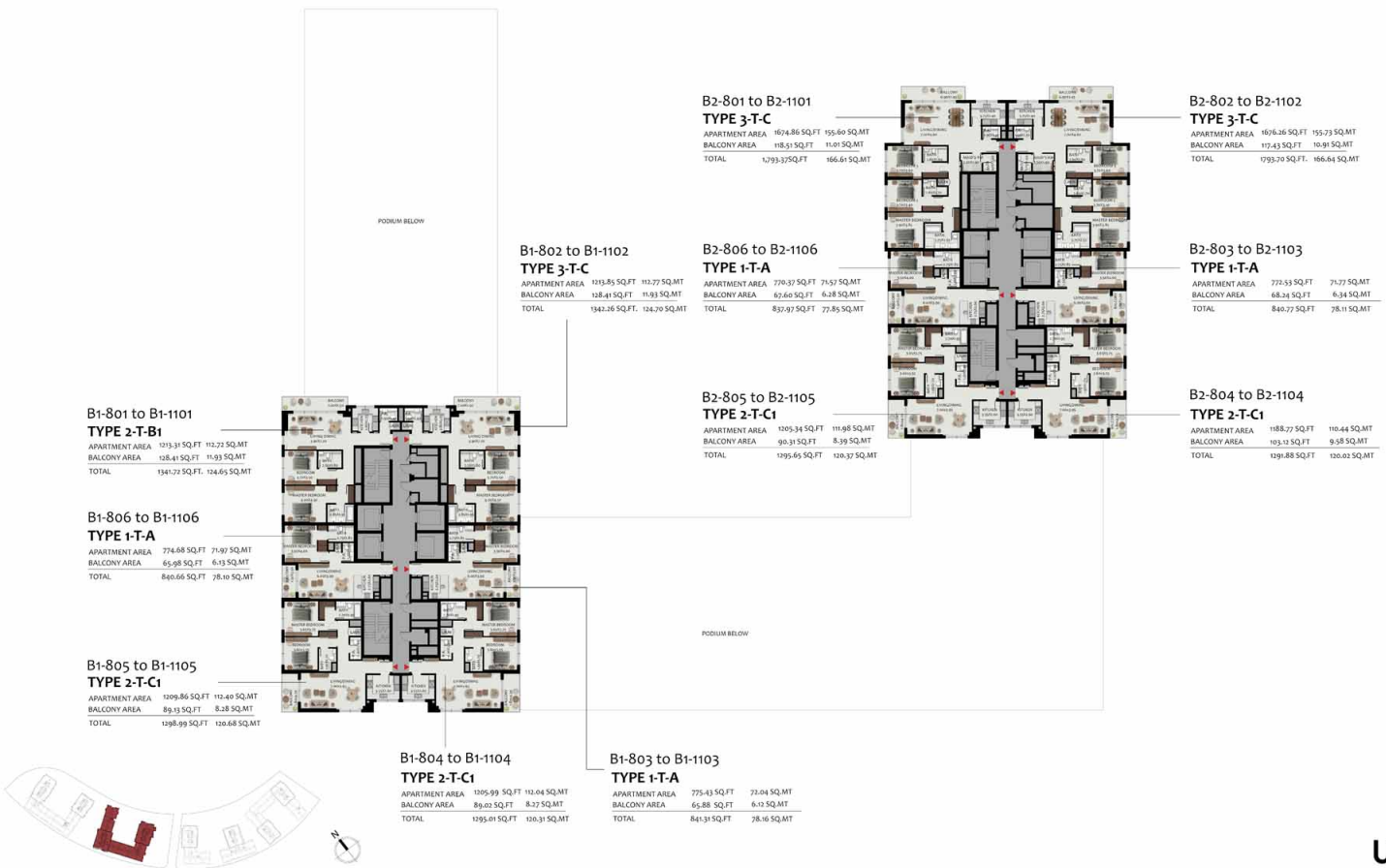
**wasl**

All room dimensions are in metric and measured to structural elements and exclude wall finishes and construction tolerances. Calculation of suite area is measured as the area bounded by the centerline of demising or party walls separating one unit from another unit, the exterior surface of all exterior walls and the exterior surface of the corridor wall on enclosing and abutting the unit. Calculation of Terrace area is measured as the area bounded by the centerlines of demising or party walls separating one unit from another unit, the outermost face of the enclosing guard and the external face of the site abutting the balcony. All materials, dimensions & drawings features and amenities are approximate at the time of printing. Information subject to change without notice. Actual suite areas may vary from the stated area. Drawings are not to scale. The developer reserves the right to make revisions

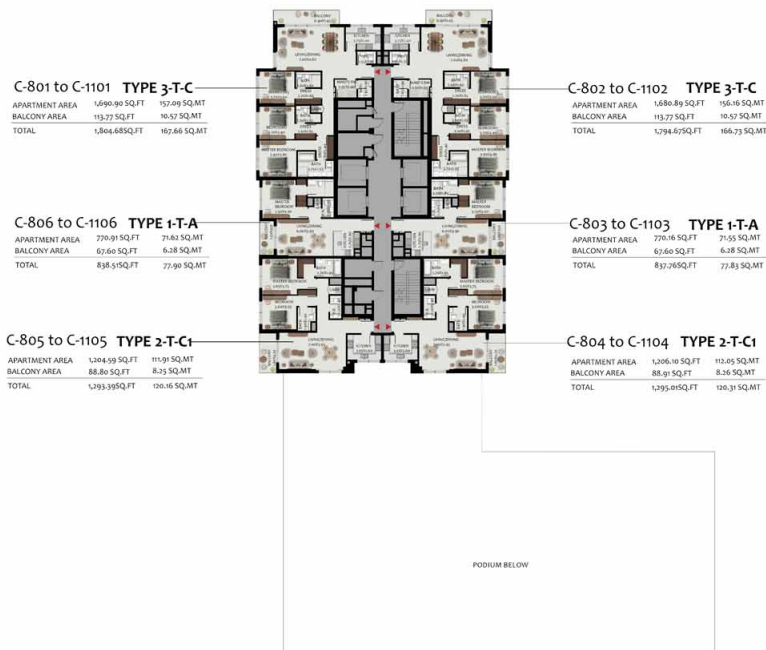


wasl

All room dimensions are in metric and measured to structural elements and exclude wall finishes and construction tolerances. Calculation of suite area is measured as the area bounded by the centerline of demising or party walls separating one unit from another unit, the exterior surface of all exterior walls and the exterior surface of the corridor wall on enclosing and abutting the unit. Calculation of Terrace area is measured as the area bounded by the centerlines of demising or party walls separating one unit from another unit, the outermost face of the enclosing guard and the external face of the site abutting the balcony. All materials, dimensions & drawings features and amenities are approximate at the time of printing. Information subject to change without notice. Actual suite areas may vary from the stated area. Drawings are not to scale. The developer reserves the right to make revisions



All room dimensions are in metric and measured to structural elements and exclude wall finishes and construction tolerances. Calculation of suite area is measured as the area bounded by the centerline of demising or party walls separating one unit from another unit, the exterior surface of all exterior walls and the exterior surface of the corridor wall on enclosing and abutting the unit. Calculation of Terrace area is measured as the area bounded by the centerlines of demising or party walls separating one unit from another unit, the outermost face of the enclosing guard and the external face of the site abutting the balcony. All materials, dimensions & drawings features and amenities are approximate at the time of printing. Information subject to change without notice. Actual suite areas may vary from the stated area. Drawings are not to scale. The developer reserves the right to make revisions



**wasi**

All room dimensions are in metric and measured to structural elements and exclude wall finishes and construction tolerances. Calculation of suite area is measured as the area bounded by the centerline of demising or party walls separating one unit from another unit, the exterior surface of all exterior walls and the exterior surface of the corridor wall on enclosing and abutting the unit. Calculation of Terrace area is measured as the area bounded by the centerlines of demising or party walls separating one unit from another unit, the outermost face of the enclosing guard and the external face of the site abutting the balcony. All materials, dimensions & drawings features and amenities are approximate at the time of printing, Information subject to change without notice. Actual suite areas may vary from the stated area. Drawings are not to scale. The developer reserves the right to make revisions

E2-801 to E2-1401  
**TYPE 3-T-C**  
APARTMENT AREA 1573.90 SQ.FT 155.51 SQ.MT  
BALCONY AREA 130.45 SQ.FT 11.79 SQ.MT  
TOTAL 1704.34 SQ.FT 166.20 SQ.MT

E2-802 to E2-1402  
**TYPE 3-T-C**  
APARTMENT AREA 1675.83 SQ.FT 155.69 SQ.MT  
BALCONY AREA 118.99 SQ.FT 10.86 SQ.MT  
TOTAL 1794.82 SQ.FT 166.55 SQ.MT

E2-803 to E2-1403  
**TYPE 1-T-A**  
APARTMENT AREA 771.34 SQ.FT 71.66 SQ.MT  
BALCONY AREA 67.60 SQ.FT 6.28 SQ.MT  
TOTAL 838.94 SQ.FT 77.94 SQ.MT

E2-804 to E2-1404  
**TYPE 2-T-C1**  
APARTMENT AREA 1204.59 SQ.FT 111.91 SQ.MT  
BALCONY AREA 90.63 SQ.FT 8.41 SQ.MT  
TOTAL 1295.22 SQ.FT 120.33 SQ.MT

E2-806 to C2-1406  
**TYPE 1-T-A**  
APARTMENT AREA 771.45 SQ.FT 71.67 SQ.MT  
BALCONY AREA 67.60 SQ.FT 6.28 SQ.MT  
TOTAL 839.05 SQ.FT 77.95 SQ.MT

E2-805 to E2-1405  
**TYPE 2-T-C1**  
APARTMENT AREA 1202.33 SQ.FT 111.70 SQ.MT  
BALCONY AREA 90.63 SQ.FT 8.41 SQ.MT  
TOTAL 1292.96 SQ.FT 120.12 SQ.MT

E1-802 to E1-1402  
**TYPE 3-T-C**  
APARTMENT AREA 1232.99 SQ.FT 113.69 SQ.MT  
BALCONY AREA 125.18 SQ.FT 11.63 SQ.MT  
TOTAL 1358.17 SQ.FT 125.32 SQ.MT

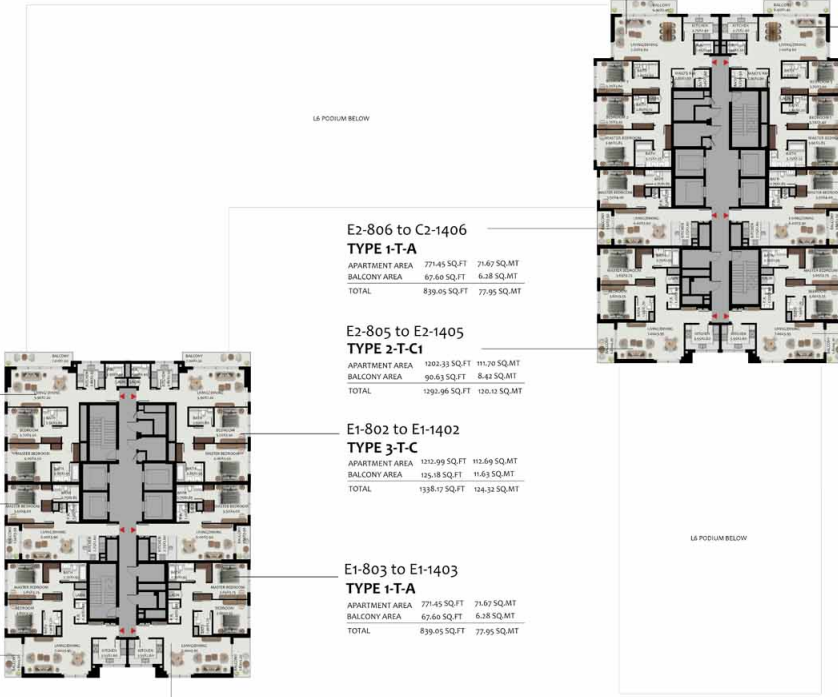
E1-803 to E1-1403  
**TYPE 1-T-A**  
APARTMENT AREA 771.45 SQ.FT 71.67 SQ.MT  
BALCONY AREA 67.60 SQ.FT 6.28 SQ.MT  
TOTAL 839.05 SQ.FT 77.95 SQ.MT

E1-801 to E1-1401  
**TYPE 2-T-B1**  
APARTMENT AREA 1271.26 SQ.FT 117.53 SQ.MT  
BALCONY AREA 125.18 SQ.FT 11.63 SQ.MT  
TOTAL 1396.44 SQ.FT 129.16 SQ.MT

E1-806 to E1-1406  
**TYPE 1-T-A**  
APARTMENT AREA 770.91 SQ.FT 71.62 SQ.MT  
BALCONY AREA 67.60 SQ.FT 6.28 SQ.MT  
TOTAL 838.51 SQ.FT 77.90 SQ.MT

E1-805 to E1-1405  
**TYPE 2-T-C1**  
APARTMENT AREA 1205.88 SQ.FT 112.03 SQ.MT  
BALCONY AREA 89.43 SQ.FT 8.31 SQ.MT  
TOTAL 1295.31 SQ.FT 120.34 SQ.MT

E1-804 to E1-1404  
**TYPE 2-T-C1**  
APARTMENT AREA 1202.97 SQ.FT 111.76 SQ.MT  
BALCONY AREA 89.43 SQ.FT 8.31 SQ.MT  
TOTAL 1292.40 SQ.FT 120.07 SQ.MT

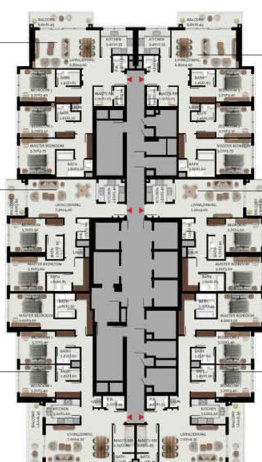


All room dimensions are in metric and measured to structural elements and exclude wall finishes and construction tolerances. Calculation of suite area is measured as the area bounded by the centerline of demising or party walls separating one unit from another unit, the exterior surface of all exterior walls and the exterior surface of the corridor wall on enclosing and abutting the unit. Calculation of Terrace area is measured as the area bounded by the centerlines of demising or party walls separating one unit from another unit, the outermost face of the enclosing guard and the external face of the site abutting the balcony. All materials, dimensions & drawings features and amenities are approximate at the time of printing. Information subject to change without notice. Actual suite areas may vary from the stated area. Drawings are not to scale. The developer reserves the right to make revisions

**A1-802 to A1-1802**  
**TYPE 3-T-A**  
APARTMENT AREA 1599.41 SQ.FT 148.59 SQ.MT  
BALCONY AREA 112.91 SQ.FT 10.49 SQ.MT  
TOTAL 1712.32 SQ.FT 159.08 SQ.MT

**A1-801 to A1-1801**  
**TYPE 2-T-A**  
APARTMENT AREA 1301.33 SQ.FT 121.70 SQ.MT  
BALCONY AREA 87.23 SQ.FT 8.15 SQ.MT  
TOTAL 1388.56 SQ.FT 129.85 SQ.MT

**A1-806 to A1-1806**  
**TYPE 3-T-B**  
APARTMENT AREA 1795.33 SQ.FT 165.43 SQ.MT  
BALCONY AREA 130.34 SQ.FT 12.16 SQ.MT  
TOTAL 1925.67 SQ.FT 177.59 SQ.MT



**A1-803 to A1-1803**  
**TYPE 3-T-A**  
APARTMENT AREA 1592.31 SQ.FT 147.93 SQ.MT  
BALCONY AREA 112.91 SQ.FT 10.49 SQ.MT  
TOTAL 1705.22 SQ.FT 158.42 SQ.MT

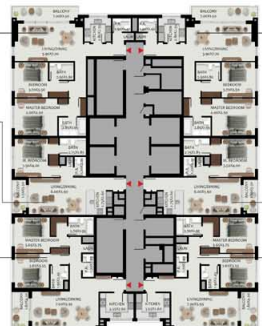
**A1-804 to A1-1804**  
**TYPE 2-T-A**  
APARTMENT AREA 1198.56 SQ.FT 111.35 SQ.MT  
BALCONY AREA 87.23 SQ.FT 8.15 SQ.MT  
TOTAL 1285.79 SQ.FT 119.50 SQ.MT

**A1-805 to A1-1805**  
**TYPE 3-T-B**  
APARTMENT AREA 1707.41 SQ.FT 158.16 SQ.MT  
BALCONY AREA 130.89 SQ.FT 12.16 SQ.MT  
TOTAL 1838.30 SQ.FT 170.32 SQ.MT

**A2-801 to A2-1801**  
**TYPE 2-T-B1**  
APARTMENT AREA 1309.54 SQ.FT 121.88 SQ.MT  
BALCONY AREA 120.13 SQ.FT 11.16 SQ.MT  
TOTAL 1429.67 SQ.FT 133.04 SQ.MT

**A2-806 to A2-1806**  
**TYPE 1-T-A**  
APARTMENT AREA 770.48 SQ.FT 71.58 SQ.MT  
BALCONY AREA 67.60 SQ.FT 6.28 SQ.MT  
TOTAL 838.08 SQ.FT 77.86 SQ.MT

**A2-805 to A2-1805**  
**TYPE 2-T-C1**  
APARTMENT AREA 1305.56 SQ.FT 121.00 SQ.MT  
BALCONY AREA 89.45 SQ.FT 8.31 SQ.MT  
TOTAL 1395.01 SQ.FT 129.31 SQ.MT

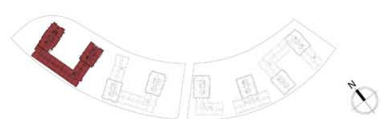


**A2-802 to A2-1802**  
**TYPE 2-T-B1**  
APARTMENT AREA 1311.48 SQ.FT 121.95 SQ.MT  
BALCONY AREA 120.13 SQ.FT 11.16 SQ.MT  
TOTAL 1431.61 SQ.FT 133.11 SQ.MT

**A2-803 to A2-1803**  
**TYPE 1-T-A**  
APARTMENT AREA 770.80 SQ.FT 71.61 SQ.MT  
BALCONY AREA 67.60 SQ.FT 6.28 SQ.MT  
TOTAL 838.40 SQ.FT 77.89 SQ.MT

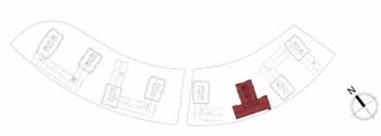
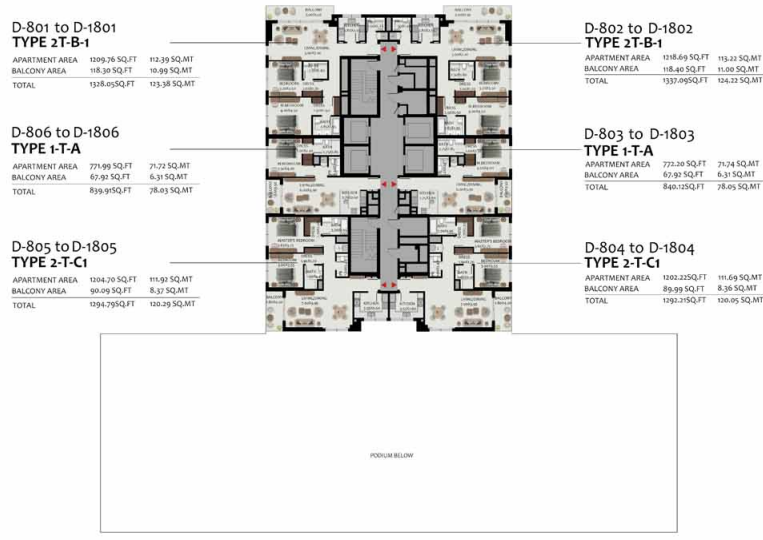
**A2-804 to A2-1804**  
**TYPE 2-T-C1**  
APARTMENT AREA 1201.04 SQ.FT 111.58 SQ.MT  
BALCONY AREA 89.45 SQ.FT 8.31 SQ.MT  
TOTAL 1290.49 SQ.FT 119.89 SQ.MT

PODIUM BELOW



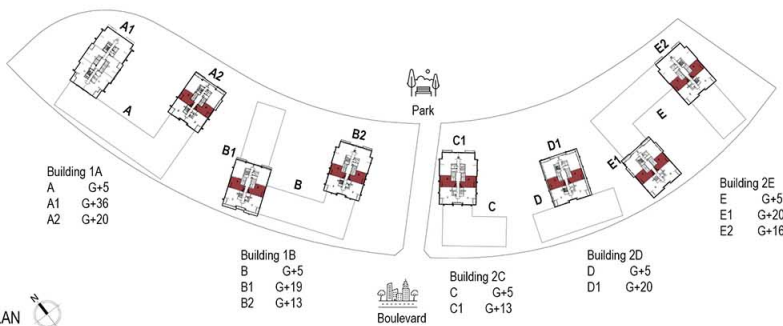
**wasl**

All room dimensions are in metric and measured to structural elements and exclude wall finishes and construction tolerances. Calculation of suite area is measured as the area bounded by the centerline of demising or party walls separating one unit from another unit, the exterior surface of all exterior walls and the exterior surface of the corridor wall on enclosing and abutting the unit. Calculation of Terrace area is measured as the area bounded by the centerlines of demising or party walls separating one unit from another unit, the outermost face of the enclosing guard and the external face of the site abutting the balcony. All materials, dimensions & drawings features and amenities are approximate at the time of printing. Information subject to change without notice. Actual suite areas may vary from the stated area. Drawings are not to scale. The developer reserves the right to make revisions



All room dimensions are in metric and measured to structural elements and exclude wall finishes and construction tolerances. Calculation of suite area is measured as the area bounded by the centerline of demising or party walls separating one unit from another unit, the exterior surface of all exterior walls and the exterior surface of the corridor wall on enclosing and abutting the unit. Calculation of Terrace area is measured as the area bounded by the centerlines of demising or party walls separating one unit from another unit, the outermost face of the enclosing guard and the external face of the site abutting the balcony. All materials, dimensions & drawings features and amenities are approximate at the time of printing. Information subject to change without notice. Actual suite areas may vary from the stated area. Drawings are not to scale. The developer reserves the right to make revisions

# UNIT LAYOUT - 1BR TYPE 1-T-A



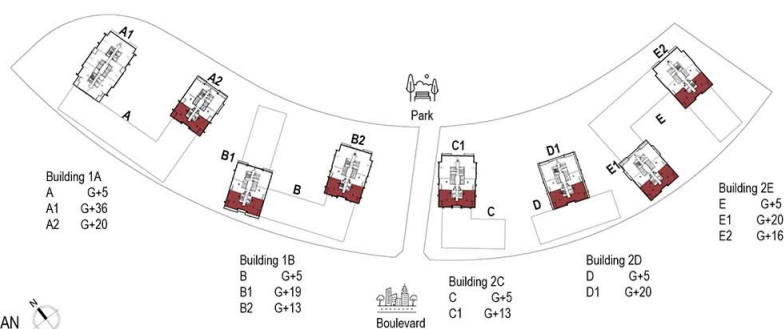
Apartment Area	71.78 Sqm	772.63 Sqft
Balcony Area	6.31 Sqm	67.92 Sqft
<b>Total Area</b>	<b>78.09 Sqm</b>	<b>840.55 Sqft</b>

BUILDING	LEVEL
1A	1 to 5, 7 to 20
1B	1 to 5, 7 to 19
2C	1 to 5, 7 to 13
2D	1 to 5, 7 to 20
2E	1 to 5, 7 to 20



All room dimensions are in metric and measured to structural elements and exclude wall finishes and construction tolerances. Calculation of suite area is measured as the area bounded by the centerline of demising or party walls separating one unit from another unit, the exterior surface of all exterior walls and the exterior surface of the corridor wall on enclosing and abutting the unit. Calculation of Terrace area is measured as the area bounded by the centerlines of demising or party walls separating one unit from another unit, the outermost face of the enclosing guard and the external face of the site abutting the balcony. All materials, dimensions & drawings features and amenities are approximate at the time of printing. Information subject to change without notice. Actual suite areas may vary from the stated area. Drawings are not to scale. The developer reserves the right to make revisions

# UNIT LAYOUT - 2BR TYPE 2-T-C1



Apartment Area	112.00 Sqm	1,205.56 Sqft
Balcony Area	8.31 Sqm	89.45 Sqft
<b>Total Area</b>	<b>120.31 Sqm</b>	<b>1,295.01 Sqft</b>

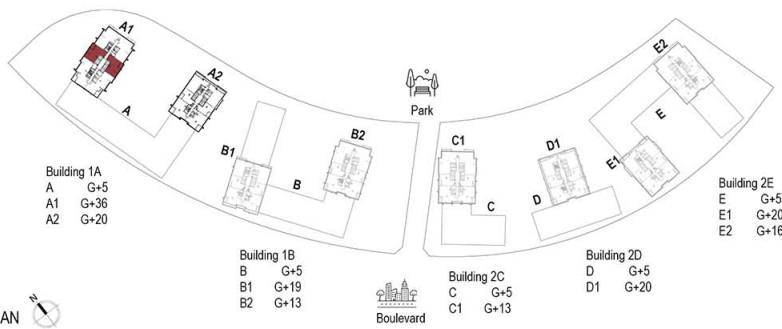
BUILDING	LEVEL
1A	7 to 20
1B	7 to 19
2C	7 to 13
2D	7 to 20
2E	1 to 5, 7 to 20

wasl

KEY PLAN

All room dimensions are in metric and measured to structural elements and exclude wall finishes and construction tolerances. Calculation of suite area is measured as the area bounded by the centerline of demising or party walls separating one unit from another unit, the exterior surface of all exterior walls and the exterior surface of the corridor wall on enclosing and abutting the unit. Calculation of Terrace area is measured as the area bounded by the centerlines of demising or party walls separating one unit from another unit, the outermost face of the enclosing guard and the external face of the site abutting the balcony. All materials, dimensions & drawings features and amenities are approximate at the time of printing. Information subject to change without notice. Actual suite areas may vary from the stated area. Drawings are not to scale. The developer reserves the right to make revisions

# UNIT LAYOUT - 2BR TYPE 2-T-A



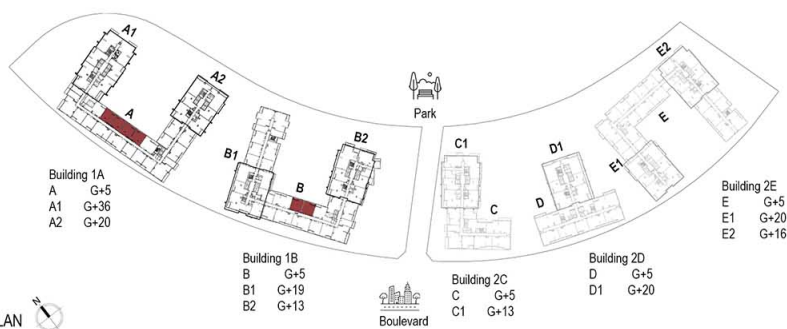
Apartment Area	111.70 Sqm	1,202.33 Sqft
Balcony Area	8.15 Sqm	87.73 Sqft
<b>Total Area</b>	<b>119.85 Sqm</b>	<b>1,290.05 Sqft</b>
<b>BUILDING</b>	<b>LEVEL</b>	
1A	1 to 5, 8 to 36	

KEY PLAN

**wasl**

All room dimensions are in metric and measured to structural elements and exclude wall finishes and construction tolerances. Calculation of suite area is measured as the area bounded by the centerline of demising or party walls separating one unit from another unit, the exterior surface of all exterior walls and the exterior surface of the corridor wall on enclosing and abutting the unit. Calculation of Terrace area is measured as the area bounded by the centerlines of demising or party walls separating one unit from another unit, the outermost face of the enclosing guard and the external face of the site abutting the balcony. All materials, dimensions & drawings features and amenities are approximate at the time of printing. Information subject to change without notice. Actual suite areas may vary from the stated area. Drawings are not to scale. The developer reserves the right to make revisions

# UNIT LAYOUT - 1BR TYPE 1-P-A2



Apartment Area	71.21 Sqm	766.50 Sqft
Balcony Area	6.18 Sqm	66.52 Sqft
<b>Total Area</b>	<b>77.39 Sqm</b>	<b>833.02 Sqft</b>

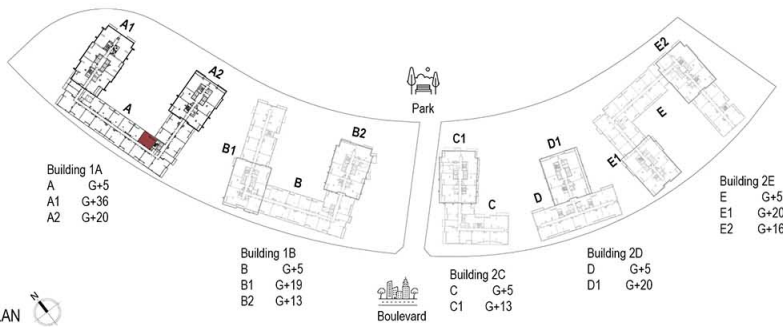
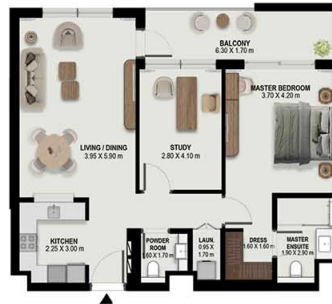
BUILDING	LEVEL
1A	1
1B	1

KEY PLAN

wasl

All room dimensions are in metric and measured to structural elements and exclude wall finishes and construction tolerances. Calculation of suite area is measured as the area bounded by the centerline of demising or party walls separating one unit from another unit, the exterior surface of all exterior walls and the exterior surface of the corridor wall on enclosing and abutting the unit. Calculation of Terrace area is measured as the area bounded by the centerlines of demising or party walls separating one unit from another unit, the outermost face of the enclosing guard and the external face of the site abutting the balcony. All materials, dimensions & drawings features and amenities are approximate at the time of printing. Information subject to change without notice. Actual suite areas may vary from the stated area. Drawings are not to scale. The developer reserves the right to make revisions

# UNIT LAYOUT - 1BR TYPE 1-P-B



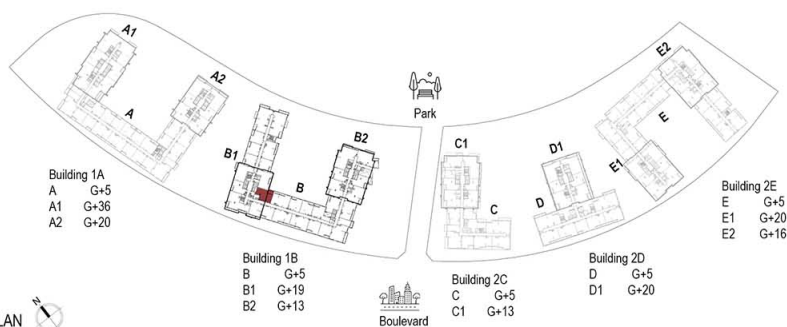
Apartment Area	88.27 Sqm	950.13 Sqft
Balcony Area	12.46 Sqm	134.12 Sqft
Total Area	100.73 Sqm	1,084.25 Sqft
<b>BUILDING</b>	<b>LEVEL</b>	
1A	1 to 5	

KEY PLAN

wasl

All room dimensions are in metric and measured to structural elements and exclude wall finishes and construction tolerances. Calculation of suite area is measured as the area bounded by the centerline of demising or party walls separating one unit from another unit, the exterior surface of all exterior walls and the exterior surface of the corridor wall on enclosing and abutting the unit. Calculation of Terrace area is measured as the area bounded by the centerlines of demising or party walls separating one unit from another unit, the outermost face of the enclosing guard and the external face of the site abutting the balcony. All materials, dimensions & drawings features and amenities are approximate at the time of printing. Information subject to change without notice. Actual suite areas may vary from the stated area. Drawings are not to scale. The developer reserves the right to make revisions

# UNIT LAYOUT - 1BR TYPE 1-P-C



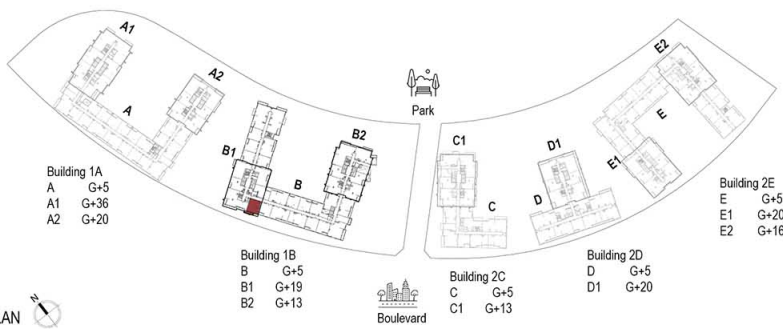
Apartment Area	81.70 Sqm	879.41 Sqft
Balcony Area	10.57 Sqm	113.77 Sqft
Total Area	92.27 Sqm	993.19 Sqft
<b>BUILDING</b>	<b>LEVEL</b>	
1B	1 to 5	

KEY PLAN

wasl

All room dimensions are in metric and measured to structural elements and exclude wall finishes and construction tolerances. Calculation of suite area is measured as the area bounded by the centerline of demising or party walls separating one unit from another unit, the exterior surface of all exterior walls and the exterior surface of the corridor wall on enclosing and abutting the unit. Calculation of Terrace area is measured as the area bounded by the centerlines of demising or party walls separating one unit from another unit, the outermost face of the enclosing guard and the external face of the site abutting the balcony. All materials, dimensions & drawings features and amenities are approximate at the time of printing. Information subject to change without notice. Actual suite areas may vary from the stated area. Drawings are not to scale. The developer reserves the right to make revisions

# UNIT LAYOUT - 1BR TYPE 1-P-D



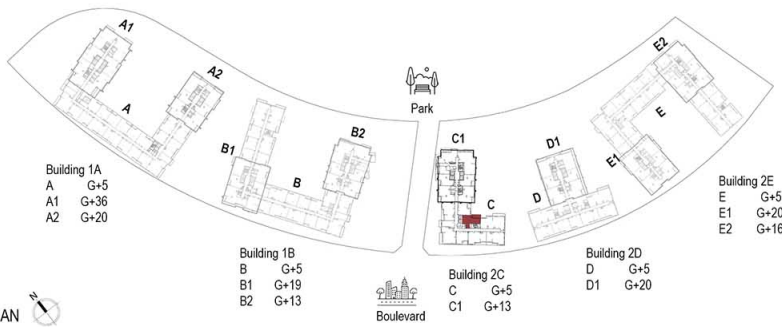
Apartment Area	79.69 Sqm	857.78 Sqft
Balcony Area	11.89 Sqm	127.98 Sqft
<b>Total Area</b>	<b>91.58 Sqm</b>	<b>985.76 Sqft</b>
<b>BUILDING</b>	<b>LEVEL</b>	
1B	1 to 5	

KEY PLAN

wasl

All room dimensions are in metric and measured to structural elements and exclude wall finishes and construction tolerances. Calculation of suite area is measured as the area bounded by the centerline of demising or party walls separating one unit from another unit, the exterior surface of all exterior walls and the exterior surface of the corridor wall on enclosing and abutting the unit. Calculation of Terrace area is measured as the area bounded by the centerlines of demising or party walls separating one unit from another unit, the outermost face of the enclosing guard and the external face of the site abutting the balcony. All materials, dimensions & drawings features and amenities are approximate at the time of printing. Information subject to change without notice. Actual suite areas may vary from the stated area. Drawings are not to scale. The developer reserves the right to make revisions

# UNIT LAYOUT - 1BR TYPE 1-P-F



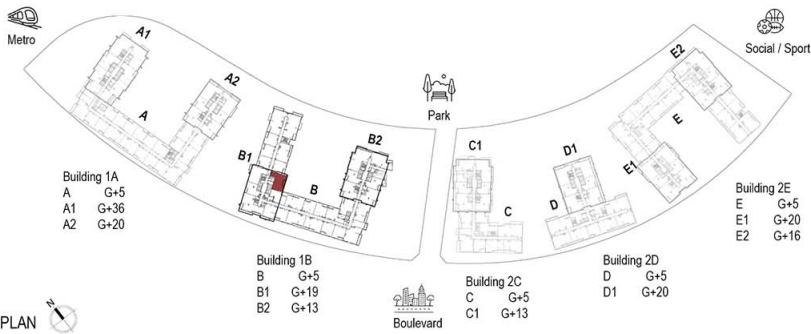
Apartment Area	82.19 Sqm	884.69 Sqft
Balcony Area	13.42 Sqm	144.45 Sqft
Total Area	95.61 Sqm	1,029.14 Sqft
<b>BUILDING</b>	<b>LEVEL</b>	
2C	1 to 5	

KEY PLAN

wasl

All room dimensions are in metric and measured to structural elements and exclude wall finishes and construction tolerances. Calculation of suite area is measured as the area bounded by the centerline of demising or party walls separating one unit from another unit, the exterior surface of all exterior walls and the exterior surface of the corridor wall on enclosing and abutting the unit. Calculation of Terrace area is measured as the area bounded by the centerlines of demising or party walls separating one unit from another unit, the outermost face of the enclosing guard and the external face of the site abutting the balcony. All materials, dimensions & drawings features and amenities are approximate at the time of printing. Information subject to change without notice. Actual suite areas may vary from the stated area. Drawings are not to scale. The developer reserves the right to make revisions

# UNIT LAYOUT - 1BR TYPE 1-P-E



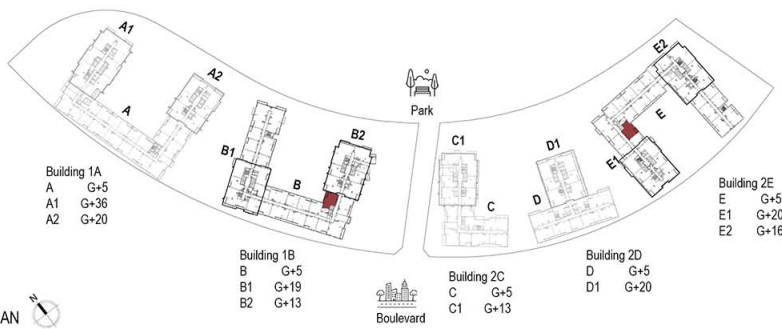
Apartment Area	100.97 Sqm	1,086.83 Sqft
Balcony Area	6.63 Sqm	71.36 Sqft
<b>Total Area</b>	<b>107.60 Sqm</b>	<b>1,158.20 Sqft</b>
<b>BUILDING</b>	<b>LEVEL</b>	
1B	1 to 5	

KEY PLAN

wasl

All room dimensions are in metric and measured to structural elements and exclude wall finishes and construction tolerances. Calculation of suite area is measured as the area bounded by the centerline of demising or party walls separating one unit from another unit, the exterior surface of all exterior walls and the exterior surface of the corridor wall on enclosing and abutting the unit. Calculation of Terrace area is measured as the area bounded by the centerlines of demising or party walls separating one unit from another unit, the outermost face of the enclosing guard and the external face of the site abutting the balcony. All materials, dimensions & drawings features and amenities are approximate at the time of printing. Information subject to change without notice. Actual suite areas may vary from the stated area. Drawings are not to scale. The developer reserves the right to make revisions

# UNIT LAYOUT - 1BR TYPE 1-P-G



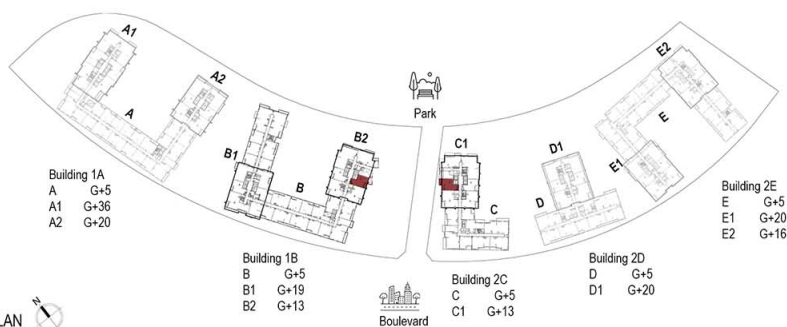
Apartment Area	89.53 Sqm	963.69 Sqft
Balcony Area	6.90 Sqm	74.27 Sqft
<b>Total Area</b>	<b>96.43 Sqm</b>	<b>1,037.96 Sqft</b>
<b>BUILDING</b>	<b>LEVEL</b>	
1B	1 to 5	
2E	1 to 5	

KEY PLAN

wasl

All room dimensions are in metric and measured to structural elements and exclude wall finishes and construction tolerances. Calculation of suite area is measured as the area bounded by the centerline of demising or party walls separating one unit from another unit, the exterior surface of all exterior walls and the exterior surface of the corridor wall on enclosing and abutting the unit. Calculation of Terrace area is measured as the area bounded by the centerlines of demising or party walls separating one unit from another unit, the outermost face of the enclosing guard and the external face of the site abutting the balcony. All materials, dimensions & drawings features and amenities are approximate at the time of printing. Information subject to change without notice. Actual suite areas may vary from the stated area. Drawings are not to scale. The developer reserves the right to make revisions

# UNIT LAYOUT - 1BR TYPE 1-T-A2



Apartment Area	80.93 Sqm	871.12 Sqft
Balcony Area	6.04 Sqm	65.01 Sqft
<b>Total Area</b>	<b>86.97 Sqm</b>	<b>936.14 Sqft</b>

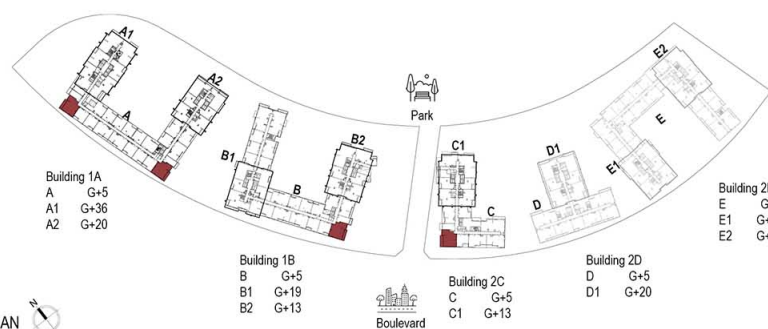
BUILDING	LEVEL
1B	1 to 5
2C	1 to 5

KEY PLAN

wasl

All room dimensions are in metric and measured to structural elements and exclude wall finishes and construction tolerances. Calculation of suite area is measured as the area bounded by the centerline of demising or party walls separating one unit from another unit, the exterior surface of all exterior walls and the exterior surface of the corridor wall on enclosing and abutting the unit. Calculation of Terrace area is measured as the area bounded by the centerlines of demising or party walls separating one unit from another unit, the outermost face of the enclosing guard and the external face of the site abutting the balcony. All materials, dimensions & drawings features and amenities are approximate at the time of printing. Information subject to change without notice. Actual suite areas may vary from the stated area. Drawings are not to scale. The developer reserves the right to make revisions

# UNIT LAYOUT - 2BR TYPE 2-P-B



Apartment Area	111.63 Sqm	1,201.58 Sqft
Balcony Area	14.06 Sqm	151.34 Sqft
<b>Total Area</b>	<b>125.69 Sqm</b>	<b>1,352.92 Sqft</b>

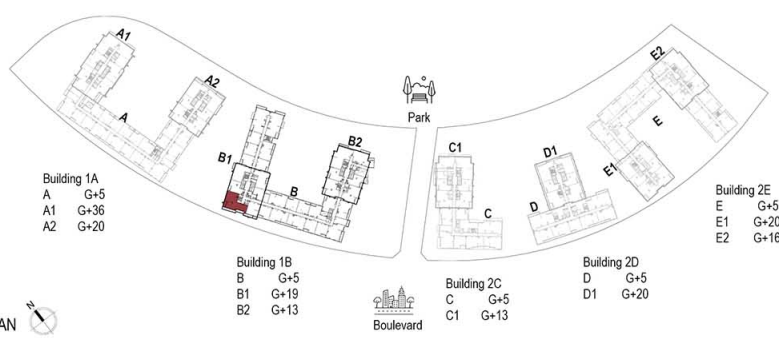
BUILDING	LEVEL
1A	1 to 5
1B	1 to 5
2C	1 to 5

KEY PLAN

wasl

All room dimensions are in metric and measured to structural elements and exclude wall finishes and construction tolerances. Calculation of suite area is measured as the area bounded by the centerline of demising or party walls separating one unit from another unit, the exterior surface of all exterior walls and the exterior surface of the corridor wall on enclosing and abutting the unit. Calculation of Terrace area is measured as the area bounded by the centerlines of demising or party walls separating one unit from another unit, the outermost face of the enclosing guard and the external face of the site abutting the balcony. All materials, dimensions & drawings features and amenities are approximate at the time of printing. Information subject to change without notice. Actual suite areas may vary from the stated area. Drawings are not to scale. The developer reserves the right to make revisions

# UNIT LAYOUT - 2BR TYPE 2-P-C



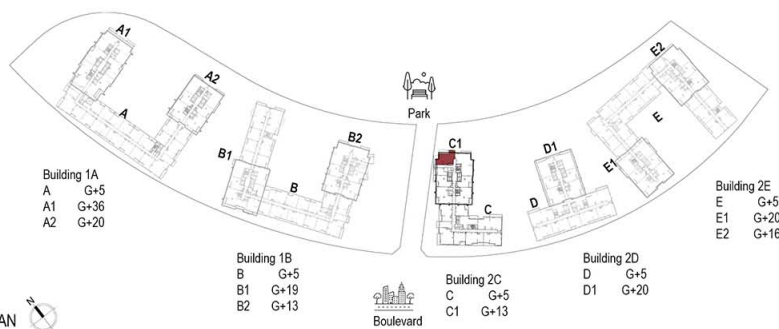
Apartment Area	135.17 Sqm	1,454.96 Sqft
Balcony Area	8.33 Sqm	89.66 Sqft
<b>Total Area</b>	<b>143.50 Sqm</b>	<b>1,544.62 Sqft</b>
<b>BUILDING</b>	<b>LEVEL</b>	
1B	1 to 5	

KEY PLAN



All room dimensions are in metric and measured to structural elements and exclude wall finishes and construction tolerances. Calculation of suite area is measured as the area bounded by the centerline of demising or party walls separating one unit from another unit, the exterior surface of all exterior walls and the exterior surface of the corridor wall on enclosing and abutting the unit. Calculation of Terrace area is measured as the area bounded by the centerlines of demising or party walls separating one unit from another unit, the outermost face of the enclosing guard and the external face of the site abutting the balcony. All materials, dimensions & drawings features and amenities are approximate at the time of printing. Information subject to change without notice. Actual suite areas may vary from the stated area. Drawings are not to scale. The developer reserves the right to make revisions

# UNIT LAYOUT - 2BR TYPE 2-P-D1



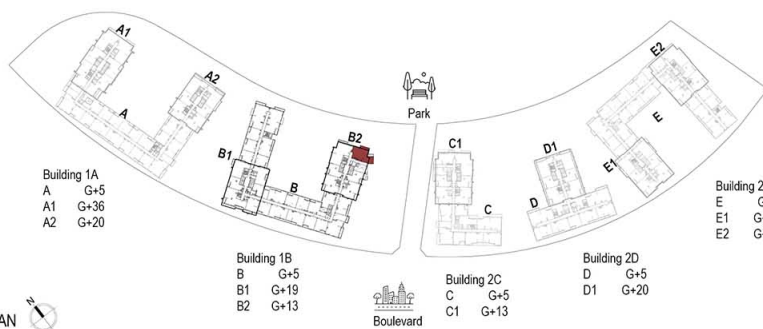
Apartment Area	107.39 Sqm	1,155.94 Sqft
Balcony Area	16.94 Sqm	182.34 Sqft
Total Area	124.33 Sqm	1,338.28 Sqft
<b>BUILDING</b>	<b>LEVEL</b>	
2C	1 to 5	

KEY PLAN

wasl

All room dimensions are in metric and measured to structural elements and exclude wall finishes and construction tolerances. Calculation of suite area is measured as the area bounded by the centerline of demising or party walls separating one unit from another unit, the exterior surface of all exterior walls and the exterior surface of the corridor wall on enclosing and abutting the unit. Calculation of Terrace area is measured as the area bounded by the centerlines of demising or party walls separating one unit from another unit, the outermost face of the enclosing guard and the external face of the site abutting the balcony. All materials, dimensions & drawings features and amenities are approximate at the time of printing. Information subject to change without notice. Actual suite areas may vary from the stated area. Drawings are not to scale. The developer reserves the right to make revisions

# UNIT LAYOUT - 2BR TYPE 2-P-D2



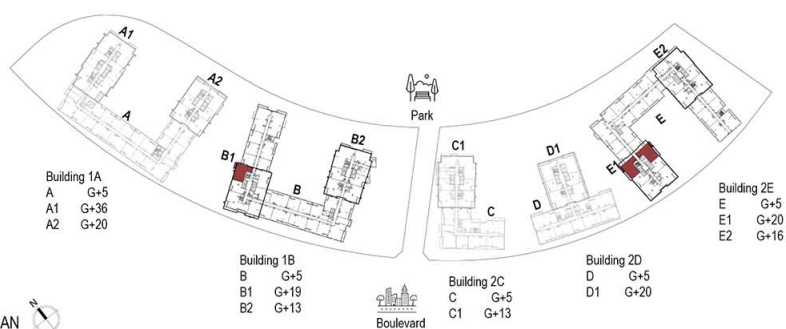
Apartment Area	119.62 Sqm	1,287.58 Sqft
Balcony Area	18.27 Sqm	196.66 Sqft
<b>Total Area</b>	<b>137.89 Sqm</b>	<b>1,484.24 Sqft</b>
<b>BUILDING</b>	<b>LEVEL</b>	
1B	1 to 5	

KEY PLAN

wasl

All room dimensions are in metric and measured to structural elements and exclude wall finishes and construction tolerances. Calculation of suite area is measured as the area bounded by the centerline of demising or party walls separating one unit from another unit, the exterior surface of all exterior walls and the exterior surface of the corridor wall on enclosing and abutting the unit. Calculation of Terrace area is measured as the area bounded by the centerlines of demising or party walls separating one unit from another unit, the outermost face of the enclosing guard and the external face of the site abutting the balcony. All materials, dimensions & drawings features and amenities are approximate at the time of printing. Information subject to change without notice. Actual suite areas may vary from the stated area. Drawings are not to scale. The developer reserves the right to make revisions

# UNIT LAYOUT - 2BR TYPE 2-T-B2



Apartment Area	107.70 Sqm	1,159.27 Sqft
Balcony Area	7.36 Sqm	79.22 Sqft
<b>Total Area</b>	<b>115.06 Sqm</b>	<b>1,238.50 Sqft</b>

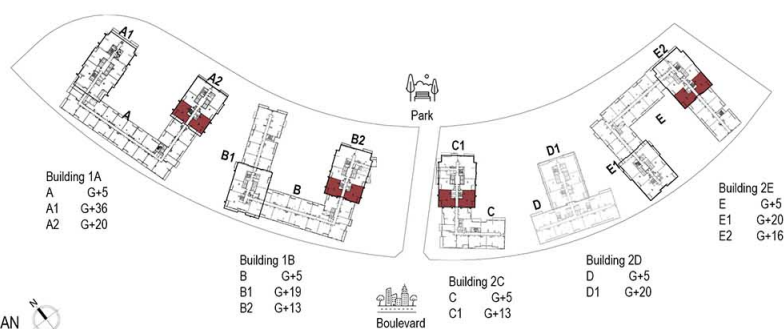
BUILDING	LEVEL
1B	1 to 5
2E	1 to 5

KEY PLAN

wasl

All room dimensions are in metric and measured to structural elements and exclude wall finishes and construction tolerances. Calculation of suite area is measured as the area bounded by the centerline of demising or party walls separating one unit from another unit, the exterior surface of all exterior walls and the exterior surface of the corridor wall on enclosing and abutting the unit. Calculation of Terrace area is measured as the area bounded by the centerlines of demising or party walls separating one unit from another unit, the outermost face of the enclosing guard and the external face of the site abutting the balcony. All materials, dimensions & drawings features and amenities are approximate at the time of printing. Information subject to change without notice. Actual suite areas may vary from the stated area. Drawings are not to scale. The developer reserves the right to make revisions

# UNIT LAYOUT - 2BR TYPE 2-T-C2



Apartment Area	111.58 Sqm	1,201.04 Sqft
Balcony Area	8.35 Sqm	89.88 Sqft
<b>Total Area</b>	<b>119.93 Sqm</b>	<b>1,290.92 Sqft</b>

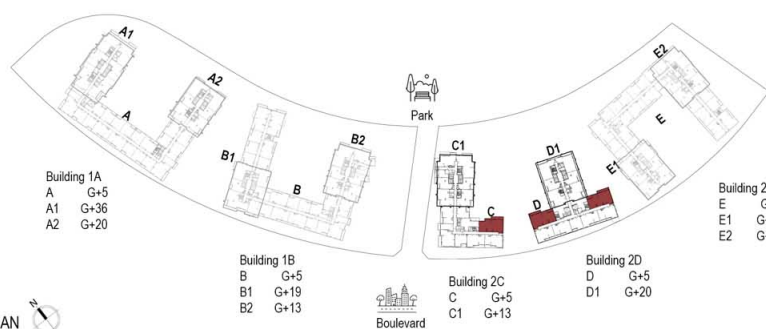
BUILDING	LEVEL
1A	1 to 5
1B	1 to 5
2C	1 to 5
2E	1 to 5

KEY PLAN

wasl

All room dimensions are in metric and measured to structural elements and exclude wall finishes and construction tolerances. Calculation of suite area is measured as the area bounded by the centerline of demising or party walls separating one unit from another unit, the exterior surface of all exterior walls and the exterior surface of the corridor wall on enclosing and abutting the unit. Calculation of Terrace area is measured as the area bounded by the centerlines of demising or party walls separating one unit from another unit, the outermost face of the enclosing guard and the external face of the site abutting the balcony. All materials, dimensions & drawings features and amenities are approximate at the time of printing. Information subject to change without notice. Actual suite areas may vary from the stated area. Drawings are not to scale. The developer reserves the right to make revisions

# UNIT LAYOUT - 3BR TYPE 3-P-A2



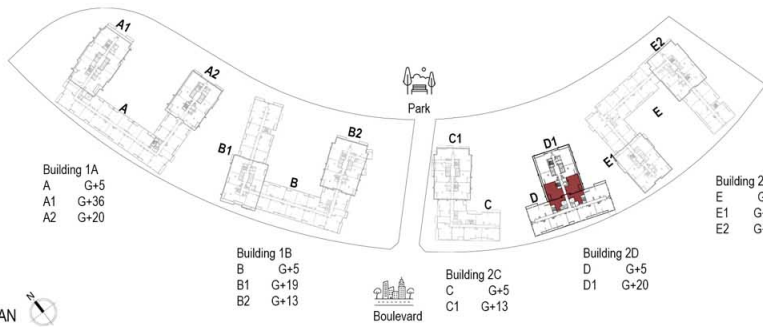
Apartment Area	151.07 Sqm	1,626.10 Sqft
Balcony Area	22.39 Sqm	241.00 Sqft
<b>Total Area</b>	<b>173.46 Sqm</b>	<b>1,867.11 Sqft</b>
<b>BUILDING</b>	<b>LEVEL</b>	
2C	1 to 5	
2D	1 to 5	

KEY PLAN

wasl

All room dimensions are in metric and measured to structural elements and exclude wall finishes and construction tolerances. Calculation of suite area is measured as the area bounded by the centerline of demising or party walls separating one unit from another unit, the exterior surface of all exterior walls and the exterior surface of the corridor wall on enclosing and abutting the unit. Calculation of Terrace area is measured as the area bounded by the centerlines of demising or party walls separating one unit from another unit, the outermost face of the enclosing guard and the external face of the site abutting the balcony. All materials, dimensions & drawings features and amenities are approximate at the time of printing. Information subject to change without notice. Actual suite areas may vary from the stated area. Drawings are not to scale. The developer reserves the right to make revisions

# UNIT LAYOUT - 3BR TYPE 3-P-B



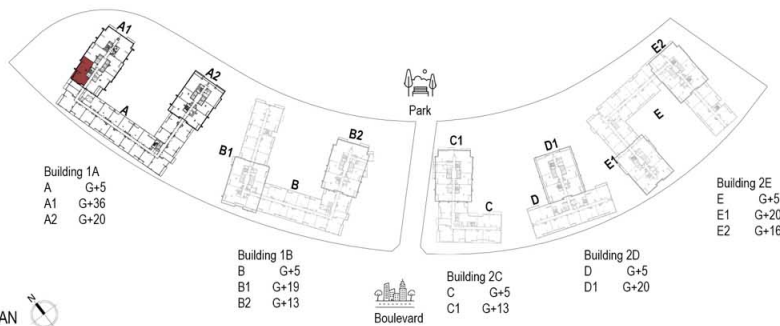
Apartment Area	172.69 Sqm	1,858.82 Sqft
Balcony Area	9.59 Sqm	103.23 Sqft
Total Area	182.28 Sqm	1,962.05 Sqft
<b>BUILDING</b>	<b>LEVEL</b>	
2D	1 to 5	

KEY PLAN

wasl

All room dimensions are in metric and measured to structural elements and exclude wall finishes and construction tolerances. Calculation of suite area is measured as the area bounded by the centerline of demising or party walls separating one unit from another unit, the exterior surface of all exterior walls and the exterior surface of the corridor wall on enclosing and abutting the unit. Calculation of Terrace area is measured as the area bounded by the centerlines of demising or party walls separating one unit from another unit, the outermost face of the enclosing guard and the external face of the site abutting the balcony. All materials, dimensions & drawings features and amenities are approximate at the time of printing. Information subject to change without notice. Actual suite areas may vary from the stated area. Drawings are not to scale. The developer reserves the right to make revisions

# UNIT LAYOUT - 3BR TYPE 3-P-C



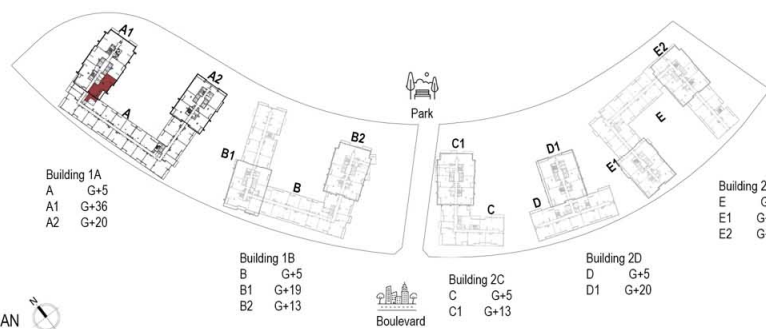
Apartment Area	156.07 Sqm	1,679.92 Sqft
Balcony Area	14.11 Sqm	151.88 Sqft
Total Area	170.18 Sqm	1,831.80 Sqft
<b>BUILDING</b>	<b>LEVEL</b>	
1A	1 to 5	

KEY PLAN

wasl

All room dimensions are in metric and measured to structural elements and exclude wall finishes and construction tolerances. Calculation of suite area is measured as the area bounded by the centerline of demising or party walls separating one unit from another unit, the exterior surface of all exterior walls and the exterior surface of the corridor wall on enclosing and abutting the unit. Calculation of Terrace area is measured as the area bounded by the centerlines of demising or party walls separating one unit from another unit, the outermost face of the enclosing guard and the external face of the site abutting the balcony. All materials, dimensions & drawings features and amenities are approximate at the time of printing. Information subject to change without notice. Actual suite areas may vary from the stated area. Drawings are not to scale. The developer reserves the right to make revisions

# UNIT LAYOUT - 3BR TYPE 3-P-D



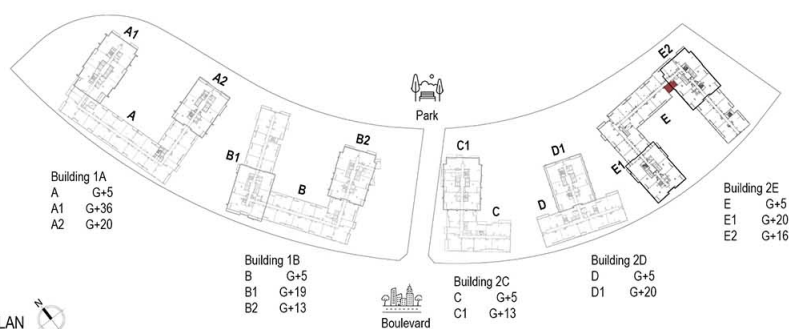
Apartment Area	173.42 Sqm	1,866.68 Sqft
Balcony Area	10.76 Sqm	115.82 Sqft
<b>Total Area</b>	<b>184.18 Sqm</b>	<b>1,982.50 Sqft</b>
<b>BUILDING</b>	<b>LEVEL</b>	
1A	1 to 5	

KEY PLAN

wasl

All room dimensions are in metric and measured to structural elements and exclude wall finishes and construction tolerances. Calculation of suite area is measured as the area bounded by the centerline of demising or party walls separating one unit from another unit, the exterior surface of all exterior walls and the exterior surface of the corridor wall on enclosing and abutting the unit. Calculation of Terrace area is measured as the area bounded by the centerlines of demising or party walls separating one unit from another unit, the outermost face of the enclosing guard and the external face of the site abutting the balcony. All materials, dimensions & drawings features and amenities are approximate at the time of printing. Information subject to change without notice. Actual suite areas may vary from the stated area. Drawings are not to scale. The developer reserves the right to make revisions

# UNIT LAYOUT - STUDIO TYPE S-P-B



Apartment Area	48.51 Sqm	522.16 Sqft
Balcony Area	0.00 Sqm	0.00 Sqft
<b>Total Area</b>	<b>48.51 Sqm</b>	<b>522.16 Sqft</b>

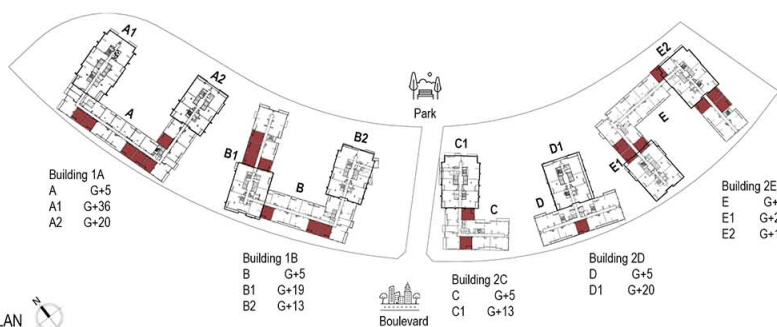
BUILDING	LEVEL
2E	1 to 5

KEY PLAN

wasl

All room dimensions are in metric and measured to structural elements and exclude wall finishes and construction tolerances. Calculation of suite area is measured as the area bounded by the centerline of demising or party walls separating one unit from another unit, the exterior surface of all exterior walls and the exterior surface of the corridor wall on enclosing and abutting the unit. Calculation of Terrace area is measured as the area bounded by the centerlines of demising or party walls separating one unit from another unit, the outermost face of the enclosing guard and the external face of the site abutting the balcony. All materials, dimensions & drawings features and amenities are approximate at the time of printing. Information subject to change without notice. Actual suite areas may vary from the stated area. Drawings are not to scale. The developer reserves the right to make revisions

# UNIT LAYOUT - 1BR TYPE 1-P-A1



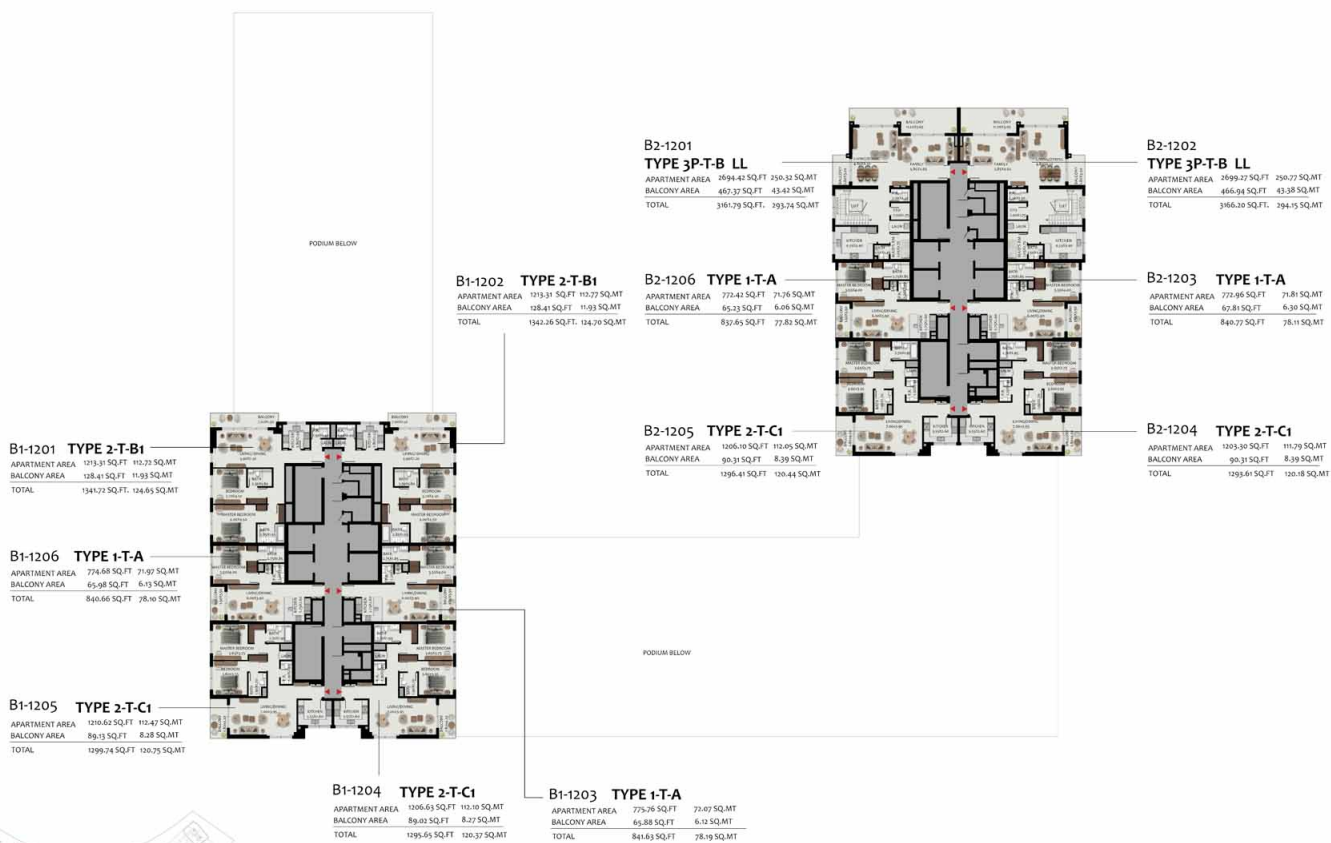
Apartment Area	71.33 Sqm	767.79 Sqft
Balcony Area	7.23 Sqm	77.82 Sqft
<b>Total Area</b>	<b>78.56 Sqm</b>	<b>845.61 Sqft</b>

BUILDING	LEVEL
1A	1 to 5
1B	1 to 5
2C	1 to 5
2D	1 to 5
2E	1 to 5

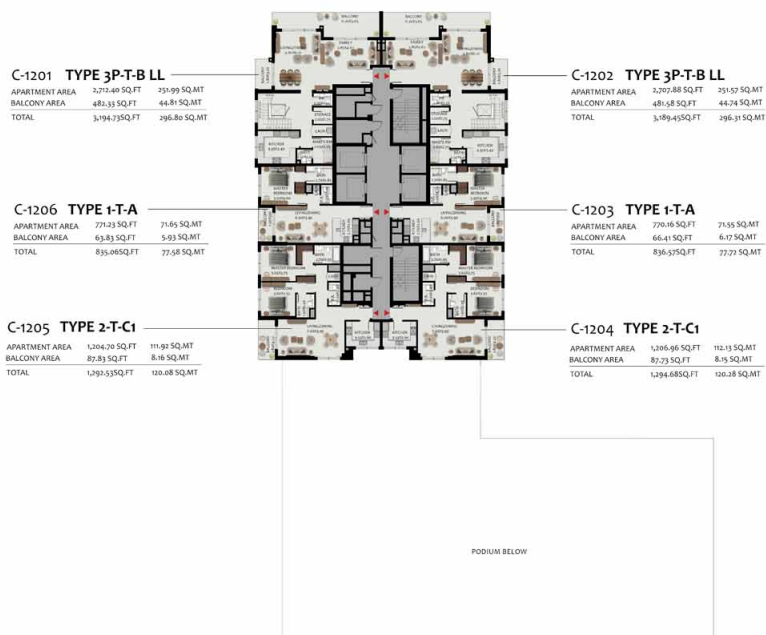
KEY PLAN

wasl

All room dimensions are in metric and measured to structural elements and exclude wall finishes and construction tolerances. Calculation of suite area is measured as the area bounded by the centerline of demising or party walls separating one unit from another unit, the exterior surface of all exterior walls and the exterior surface of the corridor wall on enclosing and abutting the unit. Calculation of Terrace area is measured as the area bounded by the centerlines of demising or party walls separating one unit from another unit, the outermost face of the enclosing guard and the external face of the site abutting the balcony. All materials, dimensions & drawings features and amenities are approximate at the time of printing. Information subject to change without notice. Actual suite areas may vary from the stated area. Drawings are not to scale. The developer reserves the right to make revisions



All room dimensions are in metric and measured to structural elements and exclude wall finishes and construction tolerances. Calculation of suite area is measured as the area bounded by the centerline of demising or party walls separating one unit from another unit, the exterior surface of all exterior walls and the exterior surface of the corridor wall on enclosing and abutting the unit. Calculation of Terrace area is measured as the area bounded by the centerlines of demising or party walls separating one unit from another unit, the outermost face of the enclosing guard and the external face of the site abutting the balcony. All materials, dimensions & drawings features and amenities are approximate at the time of printing. Information subject to change without notice. Actual suite areas may vary from the stated area. Drawings are not to scale. The developer reserves the right to make revisions

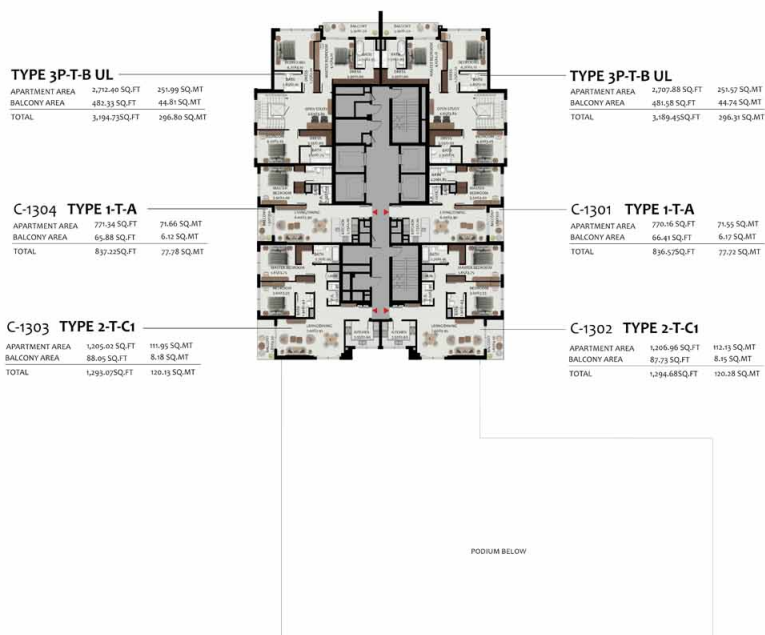


**wasl**

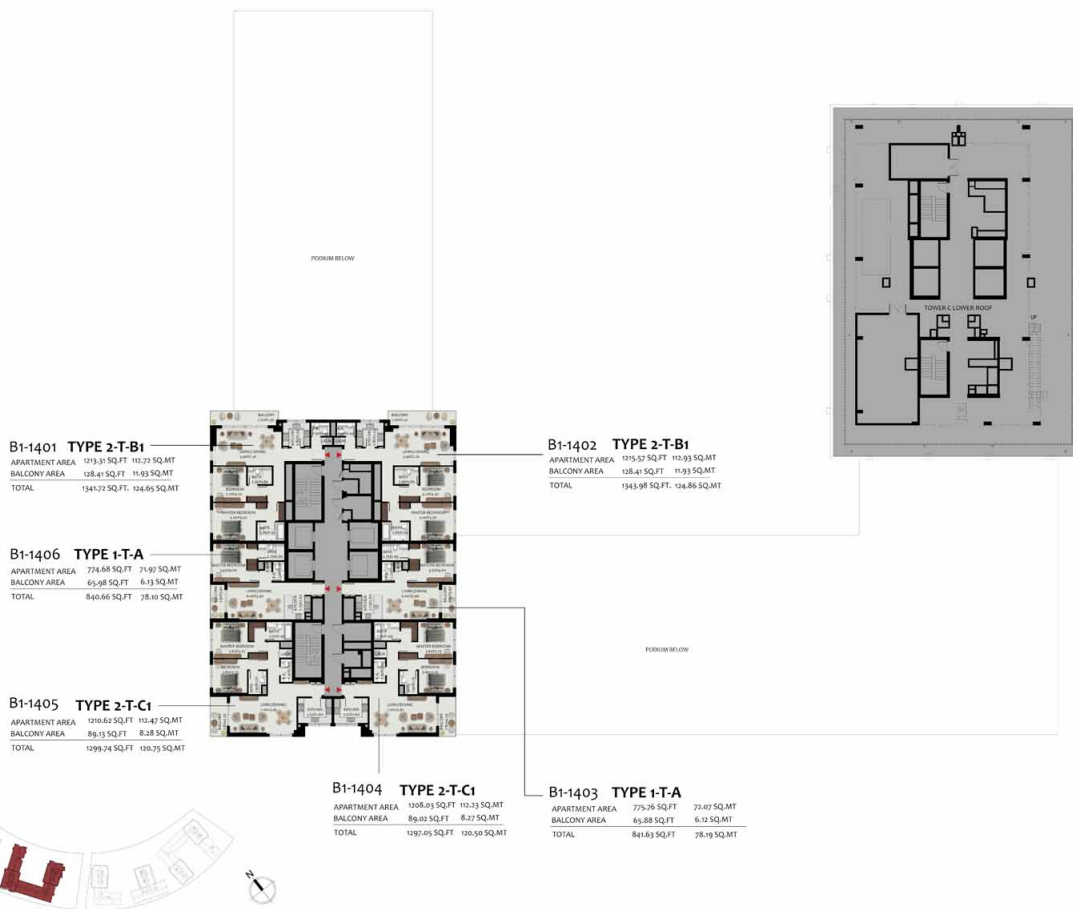
All room dimensions are in metric and measured to structural elements and exclude wall finishes and construction tolerances. Calculation of suite area is measured as the area bounded by the centerline of demising or party walls separating one unit from another unit, the exterior surface of all exterior walls and the exterior surface of the corridor wall on enclosing and abutting the unit. Calculation of Terrace area is measured as the area bounded by the centerlines of demising or party walls separating one unit from another unit, the outermost face of the enclosing guard and the external face of the site abutting the balcony. All materials, dimensions & drawings features and amenities are approximate at the time of printing. Information subject to change without notice. Actual suite areas may vary from the stated area. Drawings are not to scale. The developer reserves the right to make revisions



All room dimensions are in metric and measured to structural elements and exclude wall finishes and construction tolerances. Calculation of suite area is measured as the area bounded by the centerline of demising or party walls separating one unit from another unit, the exterior surface of all exterior walls and the exterior surface of the corridor wall on enclosing and abutting the unit. Calculation of Terrace area is measured as the area bounded by the centerlines of demising or party walls separating one unit from another unit, the outermost face of the enclosing guard and the external face of the site abutting the balcony. All materials, dimensions & drawings features and amenities are approximate at the time of printing. Information subject to change without notice. Actual suite areas may vary from the stated area. Drawings are not to scale. The developer reserves the right to make revisions

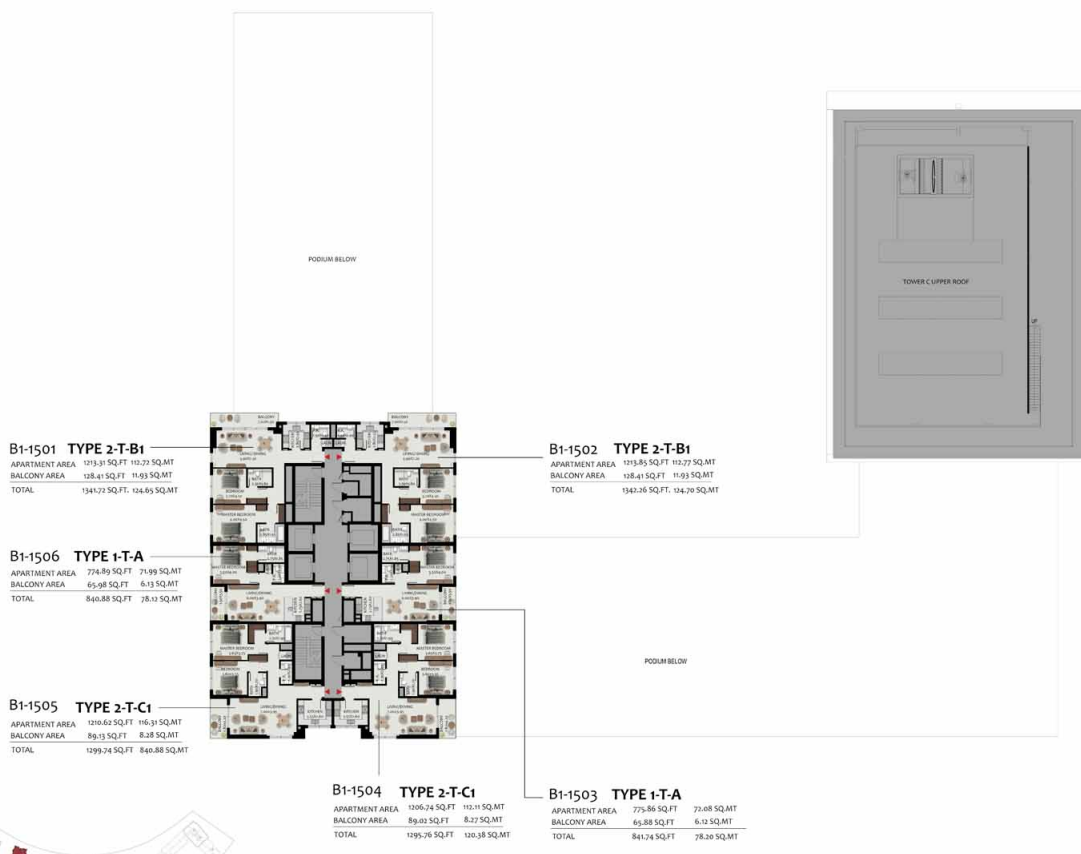


All room dimensions are in metric and measured to structural elements and exclude wall finishes and construction tolerances. Calculation of suite area is measured as the area bounded by the centerline of demising or party walls separating one unit from another unit, the exterior surface of all exterior walls and the exterior surface of the corridor wall on enclosing and abutting the unit. Calculation of Terrace area is measured as the area bounded by the centerlines of demising or party walls separating one unit from another unit, the outermost face of the enclosing guard and the external face of the site abutting the balcony. All materials, dimensions & drawings features and amenities are approximate at the time of printing. Information subject to change without notice. Actual suite areas may vary from the stated area. Drawings are not to scale. The developer reserves the right to make revisions



wasl

All room dimensions are in metric and measured to structural elements and exclude wall finishes and construction tolerances. Calculation of suite area is measured as the area bounded by the centerline of demising or party walls separating one unit from another unit, the exterior surface of all exterior walls and the exterior surface of the corridor wall on enclosing and abutting the unit. Calculation of Terrace area is measured as the area bounded by the centerlines of demising or party walls separating one unit from another unit, the outermost face of the enclosing guard and the external face of the site abutting the balcony. All materials, dimensions & drawings features and amenities are approximate at the time of printing. Information subject to change without notice. Actual suite areas may vary from the stated area. Drawings are not to scale. The developer reserves the right to make revisions



**wasi**

All room dimensions are in metric and measured to structural elements and exclude wall finishes and construction tolerances. Calculation of suite area is measured as the area bounded by the centerline of demising or party walls separating one unit from another unit, the exterior surface of all exterior walls and the exterior surface of the corridor wall on enclosing and abutting the unit. Calculation of Terrace area is measured as the area bounded by the centerlines of demising or party walls separating one unit from another unit, the outermost face of the enclosing guard and the external face of the site abutting the balcony. All materials, dimensions & drawings features and amenities are approximate at the time of printing. Information subject to change without notice. Actual suite areas may vary from the stated area. Drawings are not to scale. The developer reserves the right to make revisions



All room dimensions are in metric and measured to structural elements and exclude wall finishes and construction tolerances. Calculation of suite area is measured as the area bounded by the centerline of demising or party walls separating one unit from another unit, the exterior surface of all exterior walls and the exterior surface of the corridor wall on enclosing and abutting the unit. Calculation of Terrace area is measured as the area bounded by the centerlines of demising or party walls separating one unit from another unit, the outermost face of the enclosing guard and the external face of the site abutting the balcony. All materials, dimensions & drawings features and amenities are approximate at the time of printing. Information subject to change without notice. Actual suite areas may vary from the stated area. Drawings are not to scale. The developer reserves the right to make revisions

**TYPE 3P-T-B UL**  
 APARTMENT AREA 1,279.71 SQ.FT 251.74 SQ.MT  
 BALCONY AREA 478.46 SQ.FT 44.45 SQ.MT  
 TOTAL 3,188.16 SQ.FT 296.19 SQ.MT

**TYPE 3P-T-B UL**  
 APARTMENT AREA 1,293.68 SQ.FT 251.18 SQ.MT  
 BALCONY AREA 485.34 SQ.FT 45.09 SQ.MT  
 TOTAL 3,189.02 SQ.FT 296.27 SQ.MT

**E2-1604 TYPE 1-T-A**  
 APARTMENT AREA 771.45 SQ.FT 71.67 SQ.MT  
 BALCONY AREA 67.60 SQ.FT 6.28 SQ.MT  
 TOTAL 839.05 SQ.FT 77.95 SQ.MT

**E2-1601 TYPE 1-T-A**  
 APARTMENT AREA 770.48 SQ.FT 71.58 SQ.MT  
 BALCONY AREA 67.60 SQ.FT 6.28 SQ.MT  
 TOTAL 838.08 SQ.FT 77.86 SQ.MT

**E2-1603 TYPE 2-T-C1**  
 APARTMENT AREA 1,200.32 SQ.FT 111.69 SQ.MT  
 BALCONY AREA 90.63 SQ.FT 8.41 SQ.MT  
 TOTAL 1,290.95 SQ.FT 120.11 SQ.MT

**E2-1602 TYPE 2-T-C1**  
 APARTMENT AREA 1,205.35 SQ.FT 111.66 SQ.MT  
 BALCONY AREA 90.63 SQ.FT 8.41 SQ.MT  
 TOTAL 1,295.98 SQ.FT 120.08 SQ.MT

**E1-1601 TYPE 2-T-B1**  
 APARTMENT AREA 1,211.36 SQ.FT 112.53 SQ.MT  
 BALCONY AREA 125.18 SQ.FT 11.63 SQ.MT  
 TOTAL 1,336.54 SQ.FT 124.16 SQ.MT

**E1-1602 TYPE 2-T-B1**  
 APARTMENT AREA 1,213.09 SQ.FT 112.70 SQ.MT  
 BALCONY AREA 125.18 SQ.FT 11.63 SQ.MT  
 TOTAL 1,338.28 SQ.FT 124.33 SQ.MT

**E1-1606 TYPE 1-T-A**  
 APARTMENT AREA 771.02 SQ.FT 71.63 SQ.MT  
 BALCONY AREA 67.60 SQ.FT 6.28 SQ.MT  
 TOTAL 838.62 SQ.FT 77.91 SQ.MT

**E1-1603 TYPE 1-T-A**  
 APARTMENT AREA 771.45 SQ.FT 71.67 SQ.MT  
 BALCONY AREA 67.60 SQ.FT 6.28 SQ.MT  
 TOTAL 839.05 SQ.FT 77.95 SQ.MT

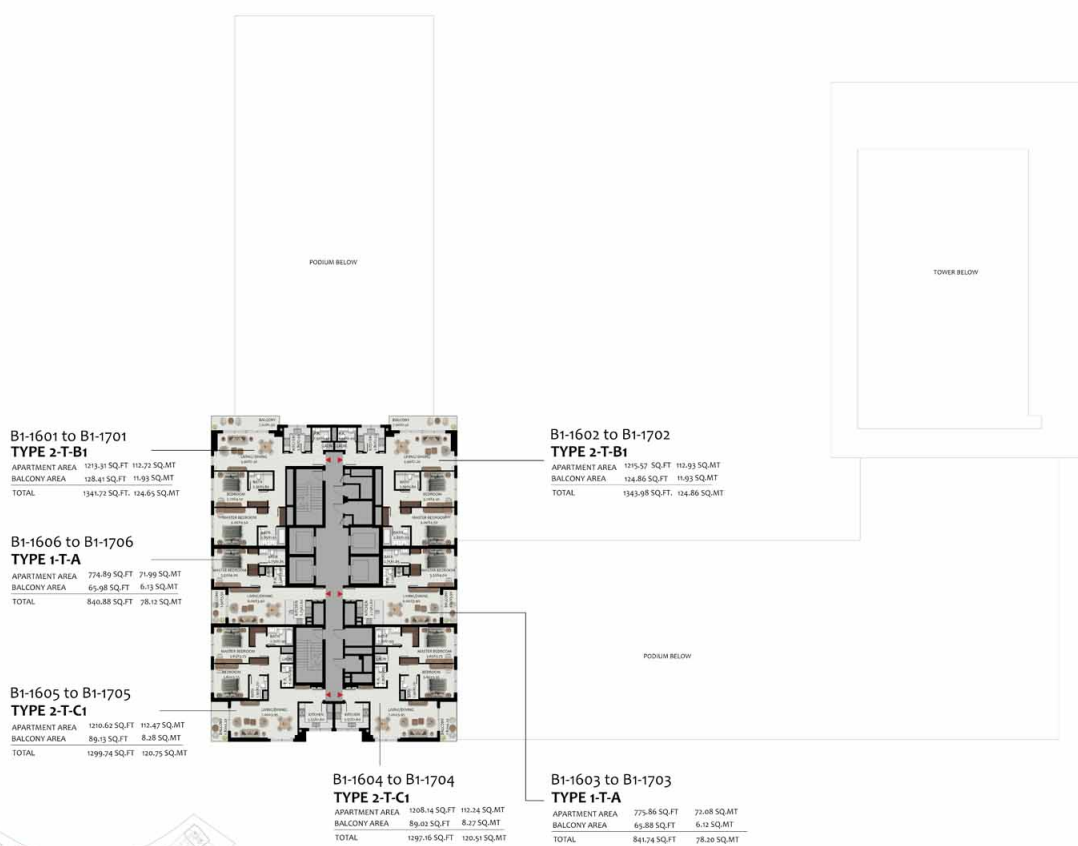
**E1-1605 TYPE 2-T-C1**  
 APARTMENT AREA 1,205.67 SQ.FT 112.01 SQ.MT  
 BALCONY AREA 89.45 SQ.FT 8.31 SQ.MT  
 TOTAL 1,295.12 SQ.FT 120.32 SQ.MT

**E1-1604 TYPE 2-T-C1**  
 APARTMENT AREA 1,200.87 SQ.FT 111.26 SQ.MT  
 BALCONY AREA 89.45 SQ.FT 8.31 SQ.MT  
 TOTAL 1,290.32 SQ.FT 120.07 SQ.MT



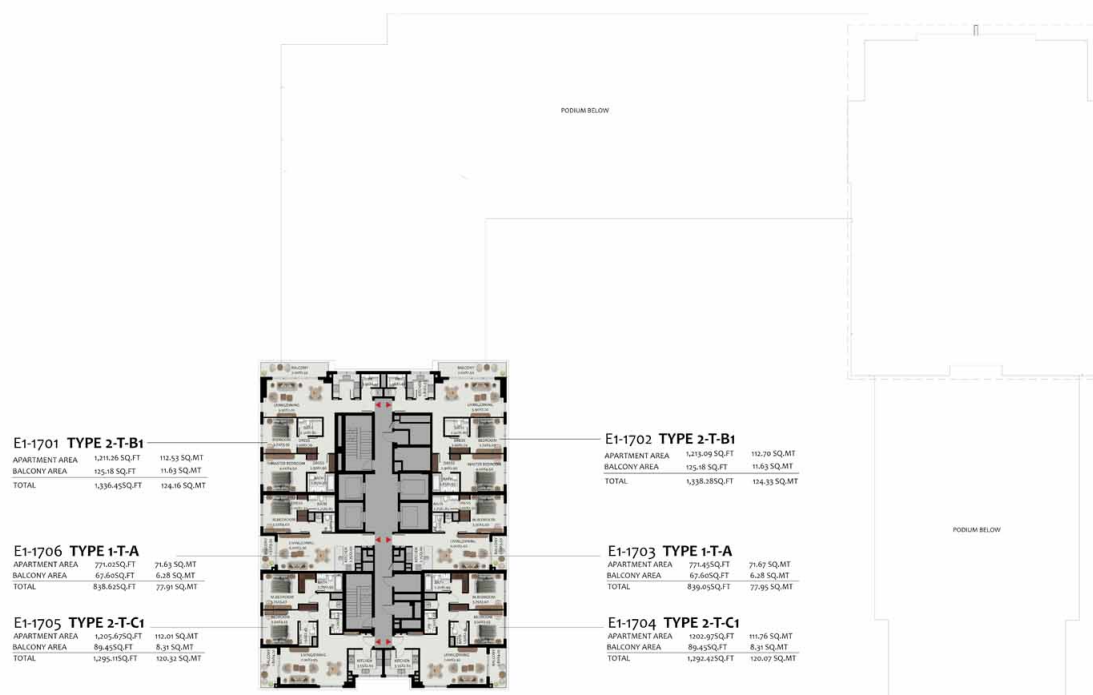
wasl

All room dimensions are in metric and measured to structural elements and exclude wall finishes and construction tolerances. Calculation of suite area is measured as the area bounded by the centerline of demising or party walls separating one unit from another unit, the exterior surface of all exterior walls and the exterior surface of the corridor wall on enclosing and abutting the unit. Calculation of Terrace area is measured as the area bounded by the centerlines of demising or party walls separating one unit from another unit, the outermost face of the enclosing guard and the external face of the site abutting the balcony. All materials, dimensions & drawings features and amenities are approximate at the time of printing. Information subject to change without notice. Actual suite areas may vary from the stated area. Drawings are not to scale. The developer reserves the right to make revisions



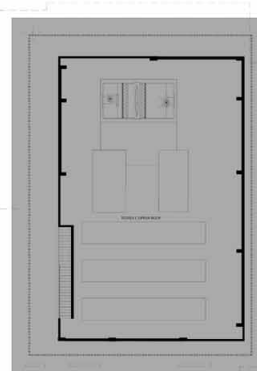
wasl

All room dimensions are in metric and measured to structural elements and exclude wall finishes and construction tolerances. Calculation of suite area is measured as the area bounded by the centerline of demising or party walls separating one unit from another unit, the exterior surface of all exterior walls and the exterior surface of the corridor wall on enclosing and abutting the unit. Calculation of Terrace area is measured as the area bounded by the centerlines of demising or party walls separating one unit from another unit, the outermost face of the enclosing guard and the external face of the site abutting the balcony. All materials, dimensions & drawings features and amenities are approximate at the time of printing. Information subject to change without notice. Actual suite areas may vary from the stated area. Drawings are not to scale. The developer reserves the right to make revisions



wasl

All room dimensions are in metric and measured to structural elements and exclude wall finishes and construction tolerances. Calculation of suite area is measured as the area bounded by the centerline of demising or party walls separating one unit from another unit, the exterior surface of all exterior walls and the exterior surface of the corridor wall on enclosing and abutting the unit. Calculation of Terrace area is measured as the area bounded by the centerlines of demising or party walls separating one unit from another unit, the outermost face of the enclosing guard and the external face of the site abutting the balcony. All materials, dimensions & drawings features and amenities are approximate at the time of printing. Information subject to change without notice. Actual suite areas may vary from the stated area. Drawings are not to scale. The developer reserves the right to make revisions



**E1-1801 TYPE 2-T-B1**

APARTMENT AREA	1,211.26 SQ.FT	112.53 SQ.MT
BALCONY AREA	125.18 SQ.FT	11.63 SQ.MT
TOTAL	1,336.45 SQ.FT	124.16 SQ.MT

**E1-1802 TYPE 2-T-B1**

APARTMENT AREA	1,219.09 SQ.FT	112.70 SQ.MT
BALCONY AREA	125.18 SQ.FT	11.63 SQ.MT
TOTAL	1,338.28 SQ.FT	124.33 SQ.MT

**E1-1806 TYPE 1-T-A**

APARTMENT AREA	771.62 SQ.FT	71.63 SQ.MT
BALCONY AREA	67.80 SQ.FT	6.28 SQ.MT
TOTAL	838.62 SQ.FT	77.91 SQ.MT

**E1-1803 TYPE 1-T-A**

APARTMENT AREA	771.62 SQ.FT	71.63 SQ.MT
BALCONY AREA	67.80 SQ.FT	6.28 SQ.MT
TOTAL	839.05 SQ.FT	77.95 SQ.MT

**E1-1805 TYPE 2-T-C1**

APARTMENT AREA	1,205.45 SQ.FT	111.99 SQ.MT
BALCONY AREA	89.45 SQ.FT	8.31 SQ.MT
TOTAL	1,294.90 SQ.FT	120.30 SQ.MT

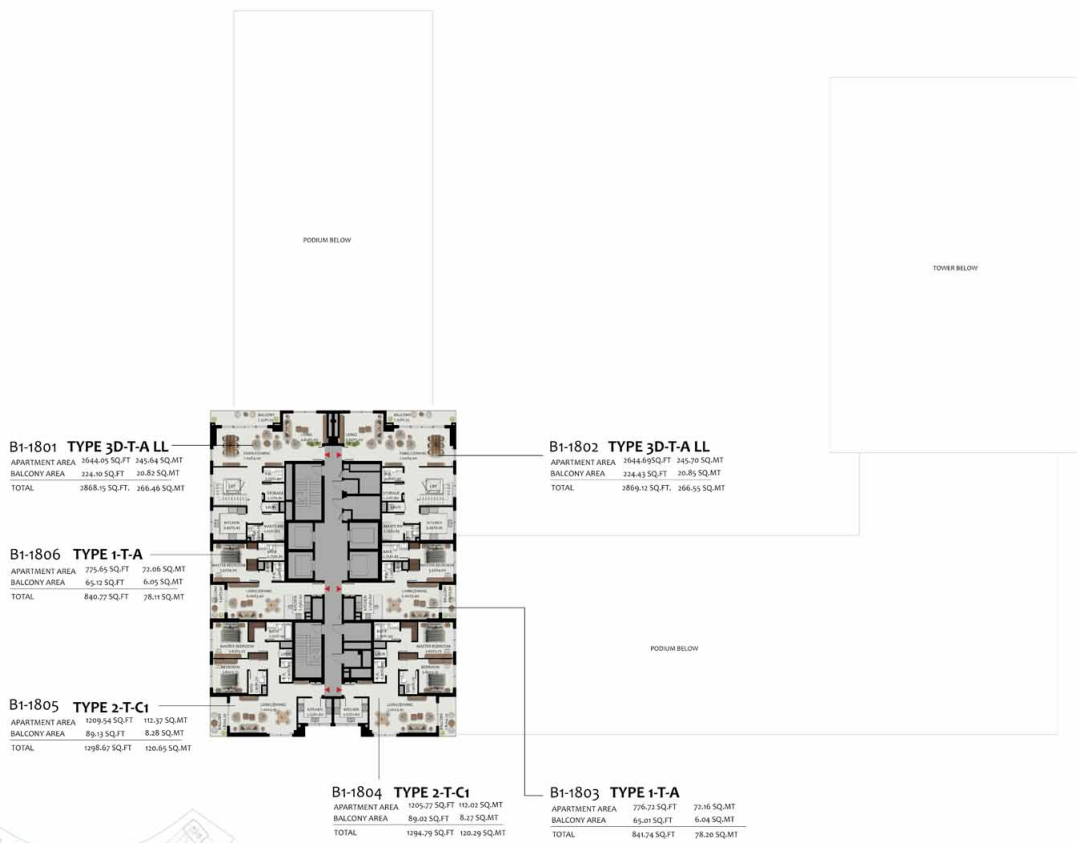
**E1-1804 TYPE 2-T-C1**

APARTMENT AREA	1,205.97 SQ.FT	111.26 SQ.MT
BALCONY AREA	89.45 SQ.FT	8.31 SQ.MT
TOTAL	1,294.42 SQ.FT	120.07 SQ.MT



**wasi**

All room dimensions are in metric and measured to structural elements and exclude wall finishes and construction tolerances. Calculation of suite area is measured as the area bounded by the centerline of demising or party walls separating one unit from another unit, the exterior surface of all exterior walls and the exterior surface of the corridor wall on enclosing and abutting the unit. Calculation of Terrace area is measured as the area bounded by the centerlines of demising or party walls separating one unit from another unit, the outermost face of the enclosing guard and the external face of the site abutting the balcony. All materials, dimensions & drawings features and amenities are approximate at the time of printing. Information subject to change without notice. Actual suite areas may vary from the stated area. Drawings are not to scale. The developer reserves the right to make revisions



**wasl**

All room dimensions are in metric and measured to structural elements and exclude wall finishes and construction tolerances. Calculation of suite area is measured as the area bounded by the centerline of demising or party walls separating one unit from another unit, the exterior surface of all exterior walls and the exterior surface of the corridor wall on enclosing and abutting the unit. Calculation of Terrace area is measured as the area bounded by the centerlines of demising or party walls separating one unit from another unit, the outermost face of the enclosing guard and the external face of the site abutting the balcony. All materials, dimensions & drawings features and amenities are approximate at the time of printing. Information subject to change without notice. Actual suite areas may vary from the stated area. Drawings are not to scale. The developer reserves the right to make revisions

**A1-1902 TYPE 3-T-A**

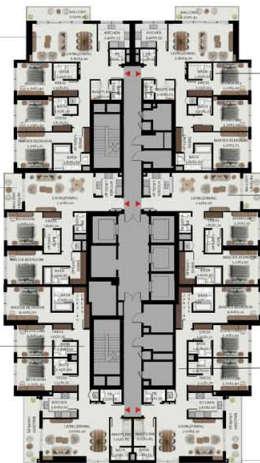
APARTMENT AREA	1563.31 SQ.FT	148.85 SQ.MT
BALCONY AREA	113.02 SQ.FT	10.50 SQ.MT
TOTAL	1715.33 SQ.FT	159.35 SQ.MT

**A1-1901 TYPE 2-T-A**

APARTMENT AREA	1201.68 SQ.FT	111.64 SQ.MT
BALCONY AREA	82.31 SQ.FT	8.13 SQ.MT
TOTAL	1389.99 SQ.FT	129.77 SQ.MT

**A1-1906 TYPE 3-T-B1**

APARTMENT AREA	1701.37 SQ.FT	158.61 SQ.MT
BALCONY AREA	129.49 SQ.FT	12.03 SQ.MT
TOTAL	1836.86 SQ.FT	170.65 SQ.MT



**A1-1903 TYPE 3-T-A**

APARTMENT AREA	1555.00 SQ.FT	144.18 SQ.MT
BALCONY AREA	113.02 SQ.FT	10.50 SQ.MT
TOTAL	1708.02 SQ.FT	158.68 SQ.MT

**A1-1904 TYPE 2-T-A**

APARTMENT AREA	1197.92 SQ.FT	111.29 SQ.MT
BALCONY AREA	87.63 SQ.FT	8.14 SQ.MT
TOTAL	1285.55 SQ.FT	119.43 SQ.MT

**A1-1905 TYPE 3-T-B1**

APARTMENT AREA	1704.75 SQ.FT	158.33 SQ.MT
BALCONY AREA	130.35 SQ.FT	12.11 SQ.MT
TOTAL	1834.60 SQ.FT	170.44 SQ.MT

**A2-1901 TYPE 3D-T-A LL**

APARTMENT AREA	2669.11 SQ.FT	247.69 SQ.MT
BALCONY AREA	251.12 SQ.FT	23.33 SQ.MT
TOTAL	2970.23 SQ.FT	271.02 SQ.MT

**A2-1906 TYPE 1-T-A**

APARTMENT AREA	2720.96 SQ.FT	253.80 SQ.MT
BALCONY AREA	66.74 SQ.FT	6.20 SQ.MT
TOTAL	2787.70 SQ.FT	260.00 SQ.MT

**A1905 TYPE 2-T-C1**

APARTMENT AREA	1203.41 SQ.FT	111.80 SQ.MT
BALCONY AREA	89.45 SQ.FT	8.31 SQ.MT
TOTAL	1292.85 SQ.FT	120.11 SQ.MT



**A2-1902 TYPE 3D-T-A LL**

APARTMENT AREA	2669.13 SQ.FT	247.67 SQ.MT
BALCONY AREA	251.01 SQ.FT	23.32 SQ.MT
TOTAL	2920.14 SQ.FT	271.29 SQ.MT

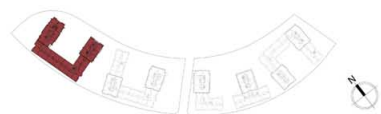
**A2-1903 TYPE 1-T-A**

APARTMENT AREA	2723.39 SQ.FT	253.85 SQ.MT
BALCONY AREA	66.74 SQ.FT	6.20 SQ.MT
TOTAL	2790.13 SQ.FT	260.05 SQ.MT

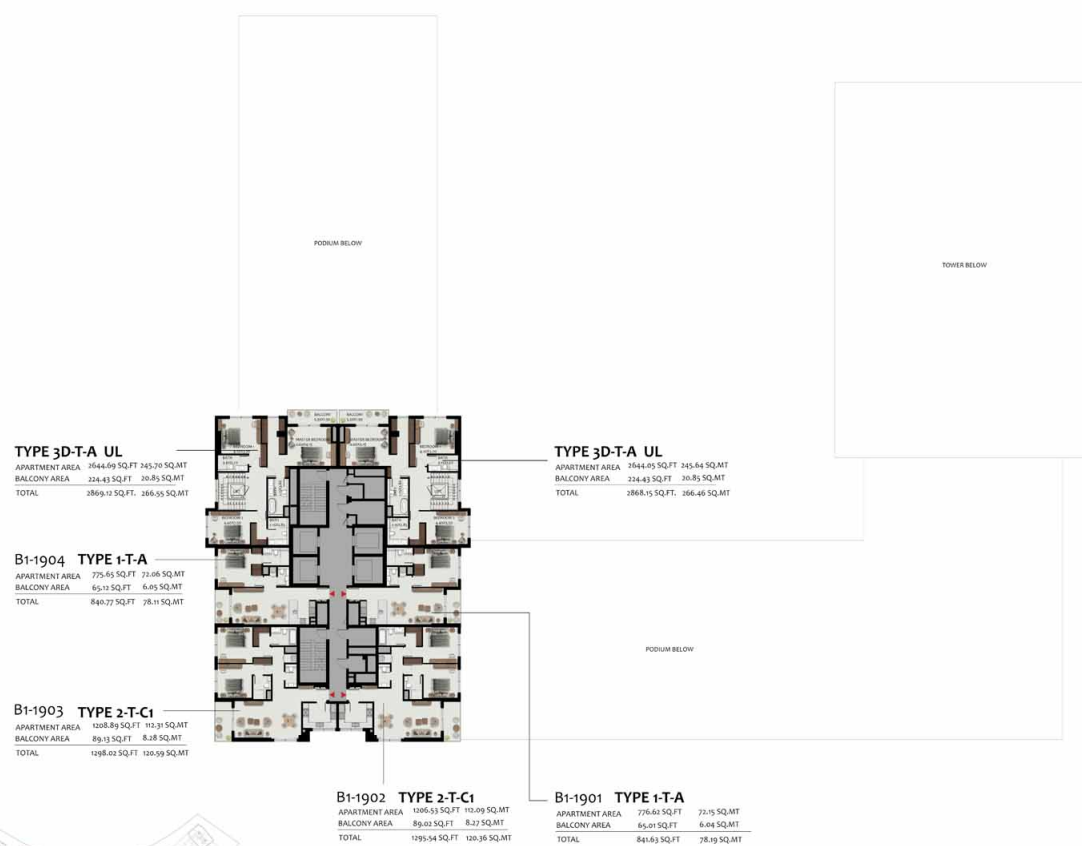
**A2-1904 TYPE 2-T-C1**

APARTMENT AREA	1198.35 SQ.FT	111.33 SQ.MT
BALCONY AREA	89.45 SQ.FT	8.31 SQ.MT
TOTAL	1287.79 SQ.FT	119.64 SQ.MT

PODIUM BELOW

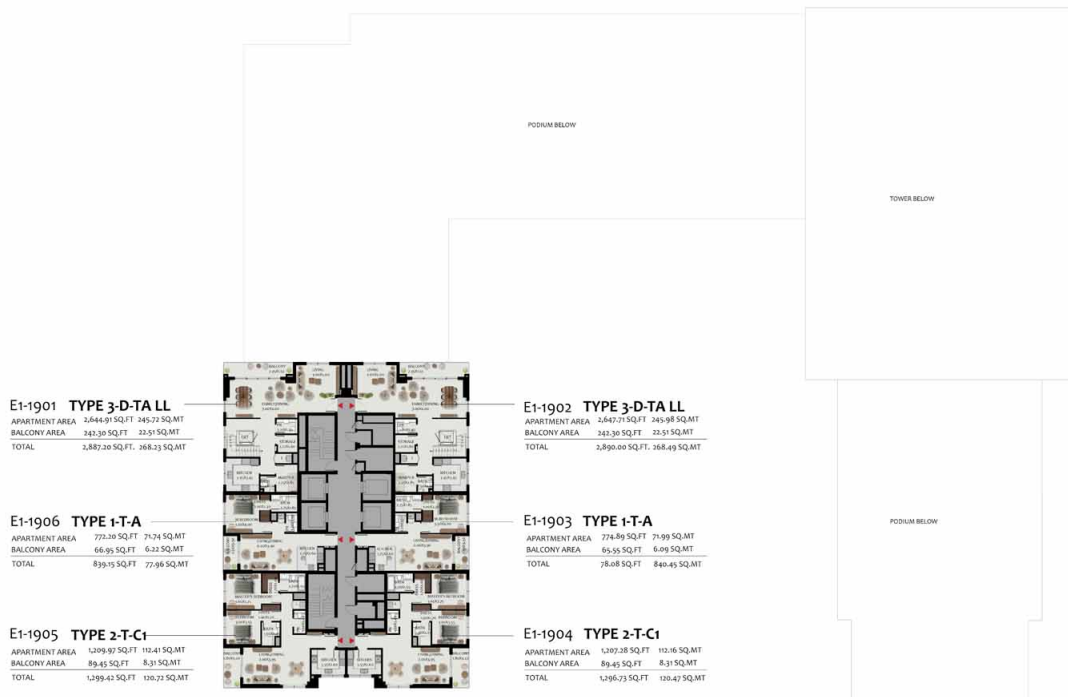


All room dimensions are in metric and measured to structural elements and exclude wall finishes and construction tolerances. Calculation of suite area is measured as the area bounded by the centerline of demising or party walls separating one unit from another unit, the exterior surface of all exterior walls and the exterior surface of the corridor wall on enclosing and abutting the unit. Calculation of Terrace area is measured as the area bounded by the centerlines of demising or party walls separating one unit from another unit, the outermost face of the enclosing guard and the external face of the site abutting the balcony. All materials, dimensions & drawings features and amenities are approximate at the time of printing. Information subject to change without notice. Actual suite areas may vary from the stated area. Drawings are not to scale. The developer reserves the right to make revisions



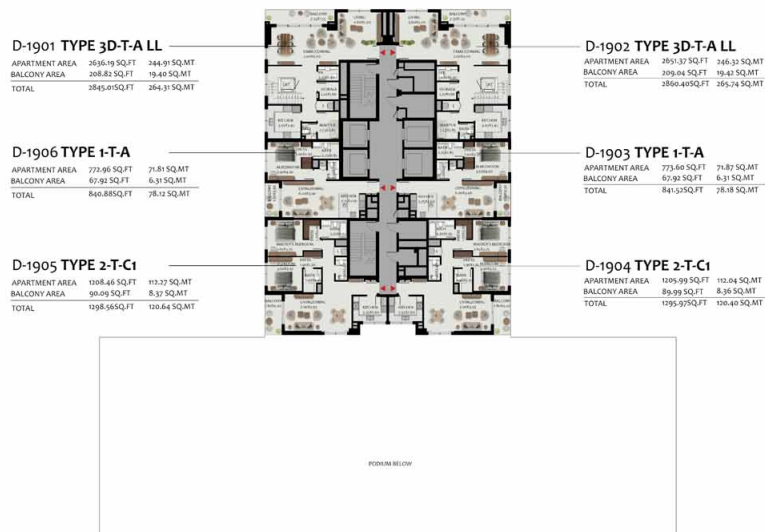
wasl

All room dimensions are in metric and measured to structural elements and exclude wall finishes and construction tolerances. Calculation of suite area is measured as the area bounded by the centerline of demising or party walls separating one unit from another unit, the exterior surface of all exterior walls and the exterior surface of the corridor wall on enclosing and abutting the unit. Calculation of Terrace area is measured as the area bounded by the centerlines of demising or party walls separating one unit from another unit, the outermost face of the enclosing guard and the external face of the site abutting the balcony. All materials, dimensions & drawings features and amenities are approximate at the time of printing. Information subject to change without notice. Actual suite areas may vary from the stated area. Drawings are not to scale. The developer reserves the right to make revisions



**wasl**

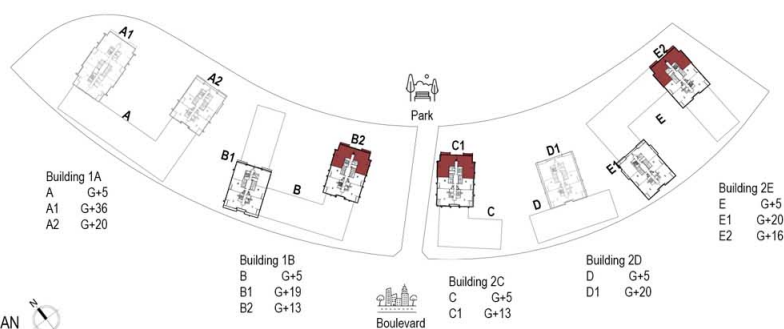
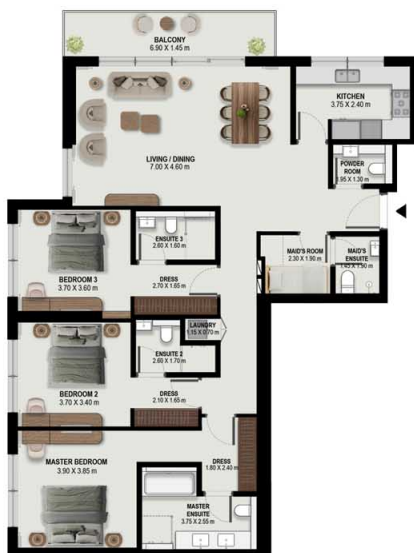
All room dimensions are in metric and measured to structural elements and exclude wall finishes and construction tolerances. Calculation of suite area is measured as the area bounded by the centerline of demising or party walls separating one unit from another unit, the exterior surface of all exterior walls and the exterior surface of the corridor wall on enclosing and abutting the unit. Calculation of Terrace area is measured as the area bounded by the centerlines of demising or party walls separating one unit from another unit, the outermost face of the enclosing guard and the external face of the site abutting the balcony. All materials, dimensions & drawings features and amenities are approximate at the time of printing. Information subject to change without notice. Actual suite areas may vary from the stated area. Drawings are not to scale. The developer reserves the right to make revisions.



**wasl**

All room dimensions are in metric and measured to structural elements and exclude wall finishes and construction tolerances. Calculation of suite area is measured as the area bounded by the centerline of demising or party walls separating one unit from another unit, the exterior surface of all exterior walls and the exterior surface of the corridor wall on enclosing and abutting the unit. Calculation of Terrace area is measured as the area bounded by the centerlines of demising or party walls separating one unit from another unit, the outermost face of the enclosing guard and the external face of the site abutting the balcony. All materials, dimensions & drawings features and amenities are approximate at the time of printing. Information subject to change without notice. Actual suite areas may vary from the stated area. Drawings are not to scale. The developer reserves the right to make revisions

# UNIT LAYOUT - 3BR TYPE 3-T-C



Apartment Area	156.11 Sqm	1,680.35 Sqft
Balcony Area	10.95 Sqm	117.86 Sqft
<b>Total Area</b>	<b>167.06 Sqm</b>	<b>1,798.22 Sqft</b>

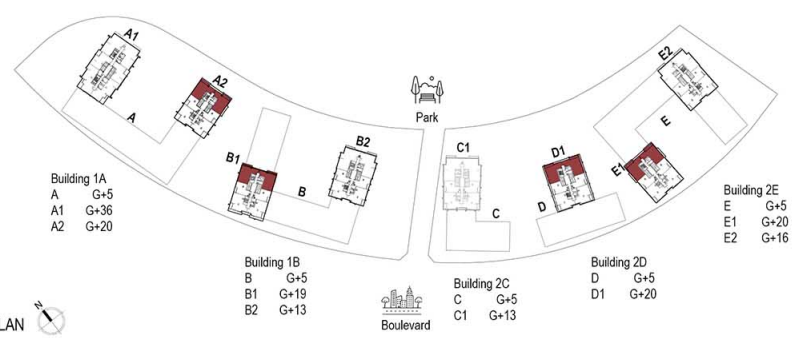
BUILDING	LEVEL
1B	2 to 5, 8 to 11
2C	2 to 5, 8 to 11
2E	2 to 5, 8 to 14

KEY PLAN

wasl

All room dimensions are in metric and measured to structural elements and exclude wall finishes and construction tolerances. Calculation of suite area is measured as the area bounded by the centerline of demising or party walls separating one unit from another unit, the exterior surface of all exterior walls and the exterior surface of the corridor wall on enclosing and abutting the unit. Calculation of Terrace area is measured as the area bounded by the centerlines of demising or party walls separating one unit from another unit, the outermost face of the enclosing guard and the external face of the site abutting the balcony. All materials, dimensions & drawings features and amenities are approximate at the time of printing. Information subject to change without notice. Actual suite areas may vary from the stated area. Drawings are not to scale. The developer reserves the right to make revisions

# UNIT LAYOUT - 2BR TYPE 2-T-B1



Apartment Area	112.38 Sqm	1,209.65 Sqft
Balcony Area	11.16 Sqm	120.13 Sqft
<b>Total Area</b>	<b>123.54 Sqm</b>	<b>1,329.77 Sqft</b>

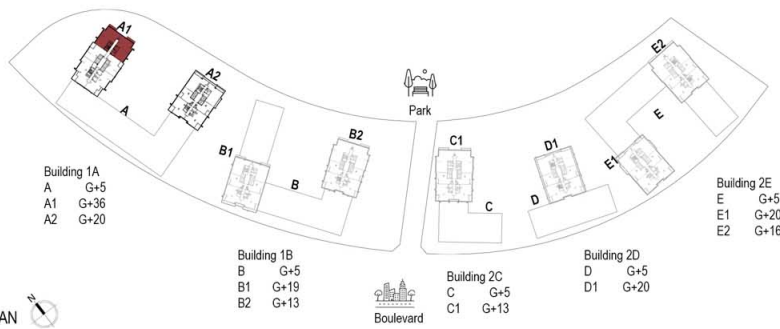
BUILDING	LEVEL
1A	2 to 5, 8 to 18
1B	8 to 17
2D	2 to 5, 8 to 18
2E	8 to 18

KEY PLAN



All room dimensions are in metric and measured to structural elements and exclude wall finishes and construction tolerances. Calculation of suite area is measured as the area bounded by the centerline of demising or party walls separating one unit from another unit, the exterior surface of all exterior walls and the exterior surface of the corridor wall on enclosing and abutting the unit. Calculation of Terrace area is measured as the area bounded by the centerlines of demising or party walls separating one unit from another unit, the outermost face of the enclosing guard and the external face of the site abutting the balcony. All materials, dimensions & drawings features and amenities are approximate at the time of printing. Information subject to change without notice. Actual suite areas may vary from the stated area. Drawings are not to scale. The developer reserves the right to make revisions

# UNIT LAYOUT - 3BR TYPE 3-T-A



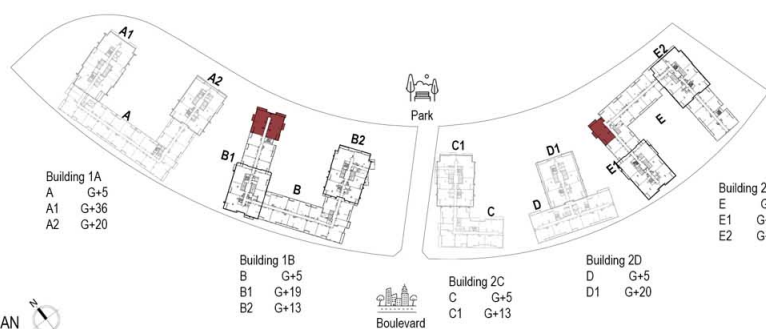
Apartment Area	149.10 Sqm	1,604.90 Sqft
Balcony Area	10.49 Sqm	112.91 Sqft
<b>Total Area</b>	<b>159.59 Sqm</b>	<b>1,171.81 Sqft</b>
<b>BUILDING</b>	<b>LEVEL</b>	
1A	2 to 5, 8 to 18, 20 to 34	

KEY PLAN

wasl

All room dimensions are in metric and measured to structural elements and exclude wall finishes and construction tolerances. Calculation of suite area is measured as the area bounded by the centerline of demising or party walls separating one unit from another unit, the exterior surface of all exterior walls and the exterior surface of the corridor wall on enclosing and abutting the unit. Calculation of Terrace area is measured as the area bounded by the centerlines of demising or party walls separating one unit from another unit, the outermost face of the enclosing guard and the external face of the site abutting the balcony. All materials, dimensions & drawings features and amenities are approximate at the time of printing. Information subject to change without notice. Actual suite areas may vary from the stated area. Drawings are not to scale. The developer reserves the right to make revisions

# UNIT LAYOUT - 3BR TYPE 3-P-A1



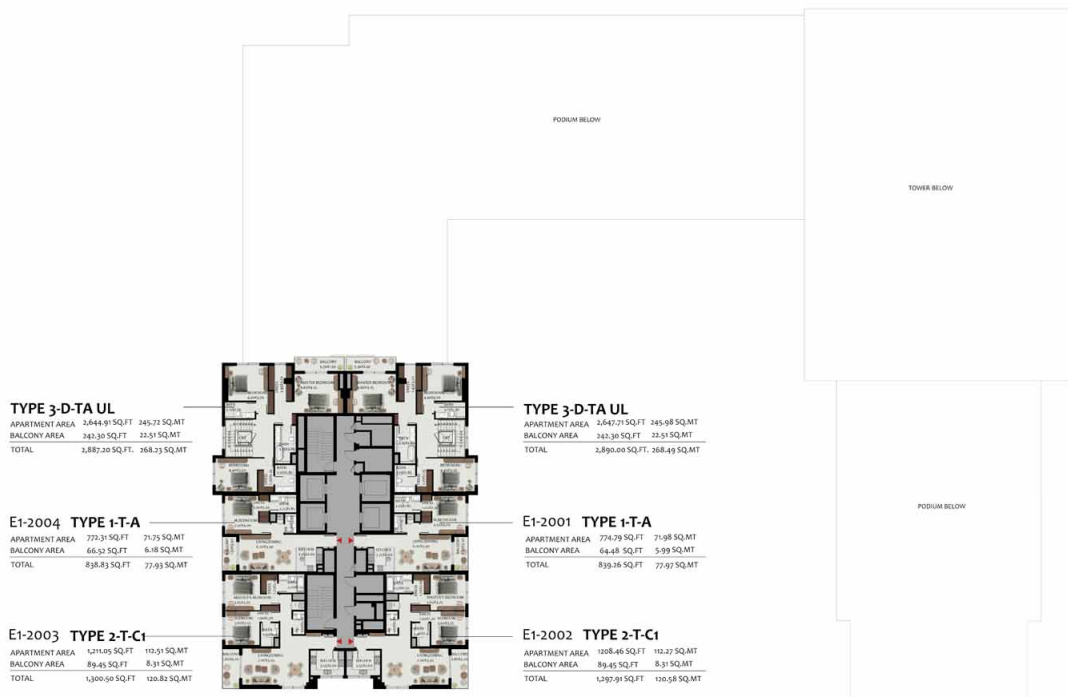
Apartment Area	150.92 Sqm	1,624.49 Sqft
Balcony Area	28.64 Sqm	308.28 Sqft
Total Area	179.56 Sqm	1,932.77 Sqft

BUILDING	LEVEL
1B	2 to 5
2E	2 to 5

KEY PLAN

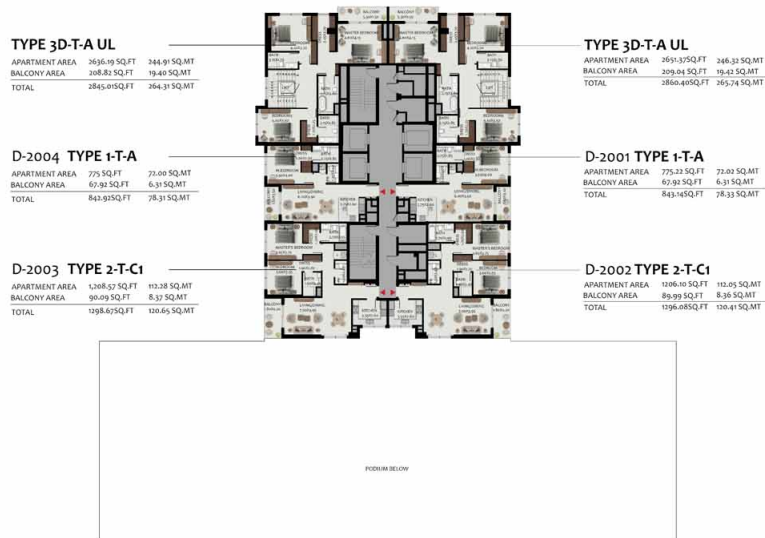
wasl

All room dimensions are in metric and measured to structural elements and exclude wall finishes and construction tolerances. Calculation of suite area is measured as the area bounded by the centerline of demising or party walls separating one unit from another unit, the exterior surface of all exterior walls and the exterior surface of the corridor wall on enclosing and abutting the unit. Calculation of Terrace area is measured as the area bounded by the centerlines of demising or party walls separating one unit from another unit, the outermost face of the enclosing guard and the external face of the site abutting the balcony. All materials, dimensions & drawings features and amenities are approximate at the time of printing, Information subject to change without notice. Actual suite areas may vary from the stated area. Drawings are not to scale. The developer reserves the right to make revisions



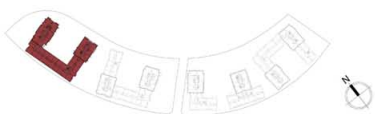
**wasi**

All room dimensions are in metric and measured to structural elements and exclude wall finishes and construction tolerances. Calculation of suite area is measured as the area bounded by the centerline of demising or party walls separating one unit from another unit, the exterior surface of all exterior walls and the exterior surface of the corridor wall on enclosing and abutting the unit. Calculation of Terrace area is measured as the area bounded by the centerlines of demising or party walls separating one unit from another unit, the outermost face of the enclosing guard and the external face of the site abutting the balcony. All materials, dimensions & drawings features and amenities are approximate at the time of printing, Information subject to change without notice. Actual suite areas may vary from the stated area. Drawings are not to scale. The developer reserves the right to make revisions

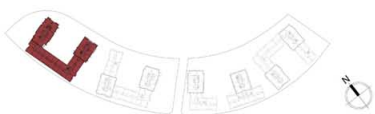


**wasl**

All room dimensions are in metric and measured to structural elements and exclude wall finishes and construction tolerances. Calculation of suite area is measured as the area bounded by the centerline of demising or party walls separating one unit from another unit, the exterior surface of all exterior walls and the exterior surface of the corridor wall on enclosing and abutting the unit. Calculation of Terrace area is measured as the area bounded by the centerlines of demising or party walls separating one unit from another unit, the outermost face of the enclosing guard and the external face of the site abutting the balcony. All materials, dimensions & drawings features and amenities are approximate at the time of printing. Information subject to change without notice. Actual suite areas may vary from the stated area. Drawings are not to scale. The developer reserves the right to make revisions

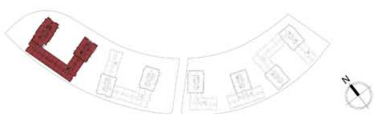
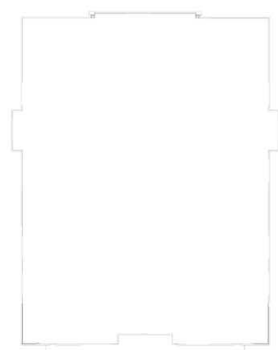
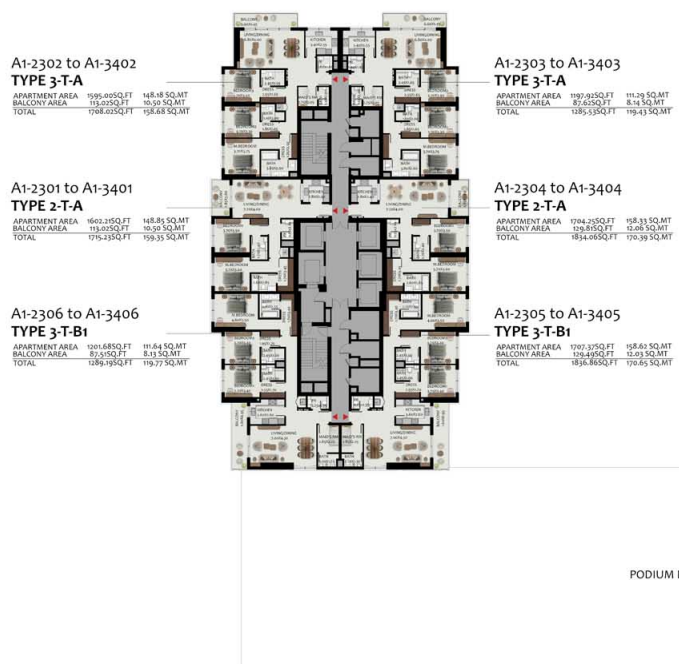


All room dimensions are in metric and measured to structural elements and exclude wall finishes and construction tolerances. Calculation of suite area is measured as the area bounded by the centerline of demising or party walls separating one unit from another unit, the exterior surface of all exterior walls and the exterior surface of the corridor wall on enclosing and abutting the unit. Calculation of Terrace area is measured as the area bounded by the centerlines of demising or party walls separating one unit from another unit, the outermost face of the enclosing guard and the external face of the site abutting the balcony. All materials, dimensions & drawings features and amenities are approximate at the time of printing. Information subject to change without notice. Actual suite areas may vary from the stated area. Drawings are not to scale. The developer reserves the right to make revisions



wasl

All room dimensions are in metric and measured to structural elements and exclude wall finishes and construction tolerances. Calculation of suite area is measured as the area bounded by the centerline of demising or party walls separating one unit from another unit, the exterior surface of all exterior walls and the exterior surface of the corridor wall on enclosing and abutting the unit. Calculation of Terrace area is measured as the area bounded by the centerlines of demising or party walls separating one unit from another unit, the outermost face of the enclosing guard and the external face of the site abutting the balcony. All materials, dimensions & drawings features and amenities are approximate at the time of printing. Information subject to change without notice. Actual suite areas may vary from the stated area. Drawings are not to scale. The developer reserves the right to make revisions



**wasi**

All room dimensions are in metric and measured to structural elements and exclude wall finishes and construction tolerances. Calculation of suite area is measured as the area bounded by the centerline of demising or party walls separating one unit from another unit, the exterior surface of all exterior walls and the exterior surface of the corridor wall on enclosing and abutting the unit. Calculation of Terrace area is measured as the area bounded by the centerlines of demising or party walls separating one unit from another unit, the outermost face of the enclosing guard and the external face of the site abutting the balcony. All materials, dimensions & drawings features and amenities are approximate at the time of printing. Information subject to change without notice. Actual suite areas may vary from the stated area. Drawings are not to scale. The developer reserves the right to make revisions

**A1-3502 TYPE 3P-T-A LL**  
 APARTMENT AREA 2686.03SQ.FT 249.54 SQ.MT  
 BALCONY AREA 476.33SQ.FT 39.05 SQ.MT  
 TOTAL 3162.36SQ.FT 288.59 SQ.MT

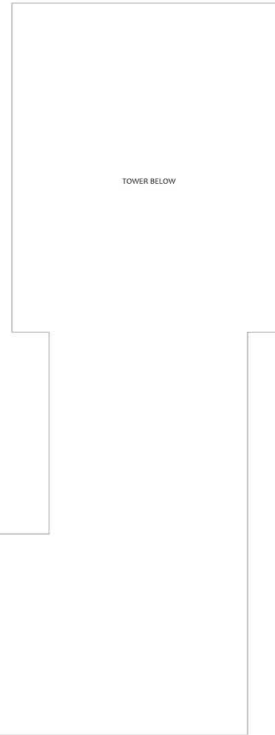
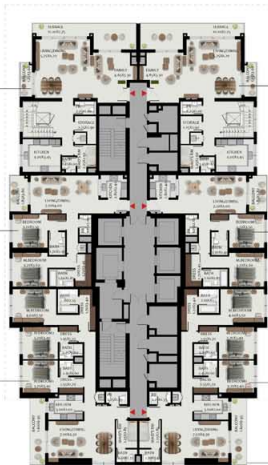
**A1-3503 TYPE 3P-T-A LL**  
 APARTMENT AREA 2686.43SQ.FT 249.02 SQ.MT  
 BALCONY AREA 478.85SQ.FT 38.89 SQ.MT  
 TOTAL 3165.28SQ.FT 287.91 SQ.MT

**A1-3501 TYPE 2-T-A**  
 APARTMENT AREA 1295.13SQ.FT 119.95 SQ.MT  
 BALCONY AREA 84.83SQ.FT 7.89 SQ.MT  
 TOTAL 1380.00SQ.FT 127.84 SQ.MT

**A1-3504 TYPE 2-T-A**  
 APARTMENT AREA 1202.44SQ.FT 111.71 SQ.MT  
 BALCONY AREA 85.09SQ.FT 7.90 SQ.MT  
 TOTAL 1287.53SQ.FT 119.61 SQ.MT

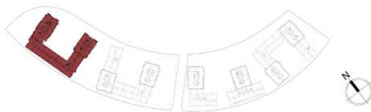
**A1-3506 TYPE 3-T-B1**  
 APARTMENT AREA 1722.25SQ.FT 160.05 SQ.MT  
 BALCONY AREA 128.84SQ.FT 11.97 SQ.MT  
 TOTAL 1851.09SQ.FT 172.02 SQ.MT

**A1-3505 TYPE 3-T-B1**  
 APARTMENT AREA 1716.29SQ.FT 159.04 SQ.MT  
 BALCONY AREA 129.49SQ.FT 12.03 SQ.MT  
 TOTAL 1845.78SQ.FT 171.07 SQ.MT



TOWER BELOW

PODIUM BELOW



**wasl**

All room dimensions are in metric and measured to structural elements and exclude wall finishes and construction tolerances. Calculation of suite area is measured as the area bounded by the centerline of demising or party walls separating one unit from another unit, the exterior surface of all exterior walls and the exterior surface of the corridor wall on enclosing and abutting the unit. Calculation of Terrace area is measured as the area bounded by the centerlines of demising or party walls separating one unit from another unit, the outermost face of the enclosing guard and the external face of the site abutting the balcony. All materials, dimensions & drawings features and amenities are approximate at the time of printing. Information subject to change without notice. Actual suite areas may vary from the stated area. Drawings are not to scale. The developer reserves the right to make revisions

**TYPE 3P-T-A UL**

APARTMENT AREA	2686.03SQ.FT	249.54 SQ.MT
BALCONY AREA	470.33SQ.FT	39.05 SQ.MT
TOTAL	3156.36SQ.FT	288.59 SQ.MT

**TYPE 3P-T-A UL**

APARTMENT AREA	2686.43SQ.FT	249.02 SQ.MT
BALCONY AREA	478.65SQ.FT	38.89 SQ.MT
TOTAL	3165.08SQ.FT	287.91 SQ.MT

**A1-3601 TYPE 2-T-A**

APARTMENT AREA	1202.87SQ.FT	111.76 SQ.MT
BALCONY AREA	88.87SQ.FT	8.08 SQ.MT
TOTAL	1291.74SQ.FT	119.84 SQ.MT

**A1-3602 TYPE 2-T-A**

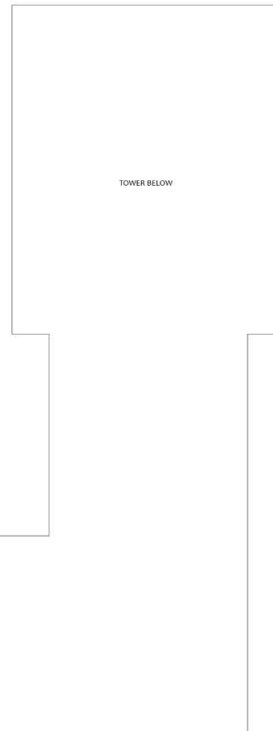
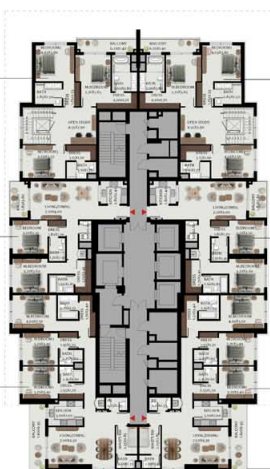
APARTMENT AREA	1202.44SQ.FT	111.71 SQ.MT
BALCONY AREA	85.09SQ.FT	7.90 SQ.MT
TOTAL	1287.53SQ.FT	119.61 SQ.MT

**A1-3604 TYPE 3-T-B**

APARTMENT AREA	1722.65SQ.FT	160.04 SQ.MT
BALCONY AREA	139.49SQ.FT	12.83 SQ.MT
TOTAL	1862.14SQ.FT	172.87 SQ.MT

**A1-3603 TYPE 3-T-B**

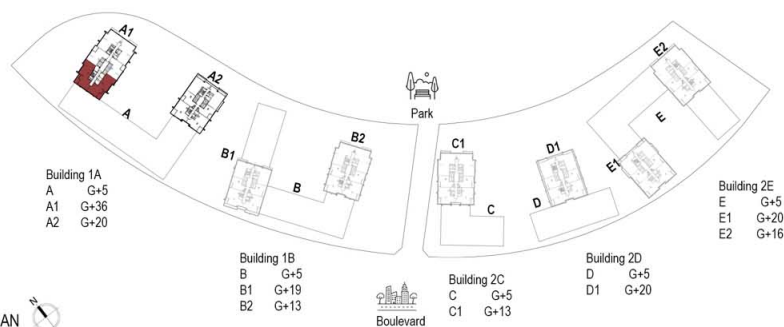
APARTMENT AREA	1711.82SQ.FT	159.04 SQ.MT
BALCONY AREA	129.49SQ.FT	12.03 SQ.MT
TOTAL	1841.31SQ.FT	171.07 SQ.MT



**wasi**

All room dimensions are in metric and measured to structural elements and exclude wall finishes and construction tolerances. Calculation of suite area is measured as the area bounded by the centerline of demising or party walls separating one unit from another unit, the exterior surface of all exterior walls and the exterior surface of the corridor wall on enclosing and abutting the unit. Calculation of Terrace area is measured as the area bounded by the centerlines of demising or party walls separating one unit from another unit, the outermost face of the enclosing guard and the external face of the site abutting the balcony. All materials, dimensions & drawings features and amenities are approximate at the time of printing. Information subject to change without notice. Actual suite areas may vary from the stated area. Drawings are not to scale. The developer reserves the right to make revisions

# UNIT LAYOUT - 3BR TYPE 3-T-B



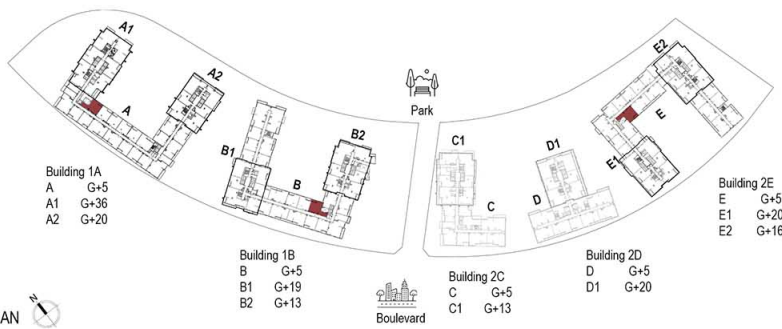
Apartment Area	158.43 Sqm	1,705.33 Sqft
Balcony Area	12.10 Sqm	130.24 Sqft
<b>Total Area</b>	<b>170.53 Sqm</b>	<b>1,835.57 Sqft</b>
<b>BUILDING</b>	<b>LEVEL</b>	
1A	8 to 18, 20 to 36	

KEY PLAN

wasl

All room dimensions are in metric and measured to structural elements and exclude wall finishes and construction tolerances. Calculation of suite area is measured as the area bounded by the centerline of demising or party walls separating one unit from another unit, the exterior surface of all exterior walls and the exterior surface of the corridor wall on enclosing and abutting the unit. Calculation of Terrace area is measured as the area bounded by the centerlines of demising or party walls separating one unit from another unit, the outermost face of the enclosing guard and the external face of the site abutting the balcony. All materials, dimensions & drawings features and amenities are approximate at the time of printing. Information subject to change without notice. Actual suite areas may vary from the stated area. Drawings are not to scale. The developer reserves the right to make revisions

# UNIT LAYOUT - 1BR TYPE 1-P-H



Apartment Area	87.02 Sqm	936.68 Sqft
Balcony Area	6.49 Sqm	69.68 Sqft
<b>Total Area</b>	<b>93.51 Sqm</b>	<b>1,006.53 Sqft</b>

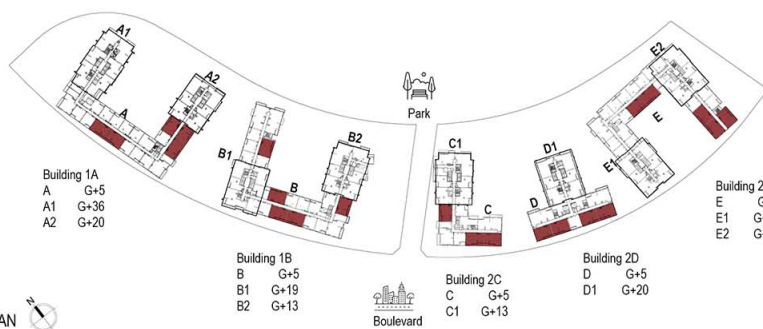
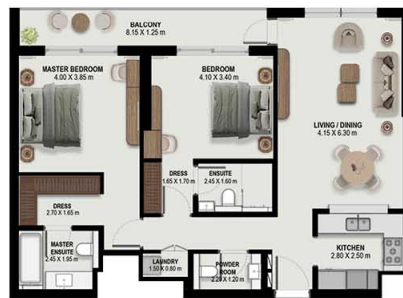
BUILDING	LEVEL
1A	1 to 5
1B	1 to 5
2E	GF to 5

KEY PLAN

**wasi**

All room dimensions are in metric and measured to structural elements and exclude wall finishes and construction tolerances. Calculation of suite area is measured as the area bounded by the centerline of demising or party walls separating one unit from another unit, the exterior surface of all exterior walls and the exterior surface of the corridor wall on enclosing and abutting the unit. Calculation of Terrace area is measured as the area bounded by the centerlines of demising or party walls separating one unit from another unit, the outermost face of the enclosing guard and the external face of the site abutting the balcony. All materials, dimensions & drawings features and amenities are approximate at the time of printing. Information subject to change without notice. Actual suite areas may vary from the stated area. Drawings are not to scale. The developer reserves the right to make revisions

# UNIT LAYOUT - 2BR TYPE 2-P-A



Apartment Area	105.38 Sqm	1,134.30 Sqft
Balcony Area	11.68 Sqm	125.72 Sqft
<b>Total Area</b>	<b>117.06 Sqm</b>	<b>1,260.02 Sqft</b>

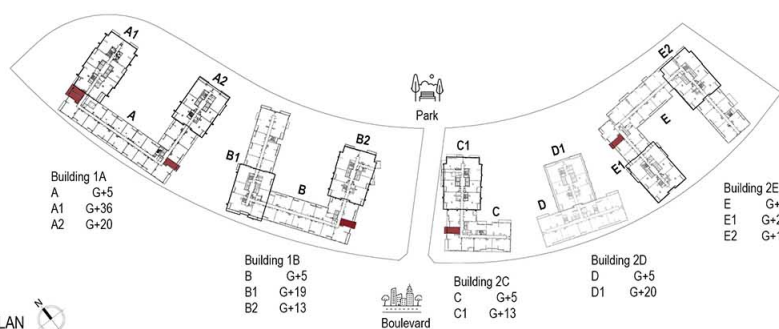
BUILDING	LEVEL
1A	1 to 5
1B	1 to 5
2C	1 to 5
2D	1 to 5
2E	GF to 5

KEY PLAN

wasl

All room dimensions are in metric and measured to structural elements and exclude wall finishes and construction tolerances. Calculation of suite area is measured as the area bounded by the centerline of demising or party walls separating one unit from another unit, the exterior surface of all exterior walls and the exterior surface of the corridor wall on enclosing and abutting the unit. Calculation of Terrace area is measured as the area bounded by the centerlines of demising or party walls separating one unit from another unit, the outermost face of the enclosing guard and the external face of the site abutting the balcony. All materials, dimensions & drawings features and amenities are approximate at the time of printing. Information subject to change without notice. Actual suite areas may vary from the stated area. Drawings are not to scale. The developer reserves the right to make revisions

# UNIT LAYOUT - STUDIO TYPE S-P-A



Apartment Area	41.76 Sqm	449.50 Sqft
Balcony Area	7.86 Sqm	84.60 Sqft
<b>Total Area</b>	<b>49.62 Sqm</b>	<b>534.11 Sqft</b>

BUILDING	LEVEL
1A	1, 2, 3, 4, 5
1B	1, 2, 3, 4, 5
2C	1, 2, 3, 4, 5
2E	GF, 1

KEY PLAN

wasl

All room dimensions are in metric and measured to structural elements and exclude wall finishes and construction tolerances. Calculation of suite area is measured as the area bounded by the centerline of demising or party walls separating one unit from another unit, the exterior surface of all exterior walls and the exterior surface of the corridor wall on enclosing and abutting the unit. Calculation of Terrace area is measured as the area bounded by the centerlines of demising or party walls separating one unit from another unit, the outermost face of the enclosing guard and the external face of the site abutting the balcony. All materials, dimensions & drawings features and amenities are approximate at the time of printing. Information subject to change without notice. Actual suite areas may vary from the stated area. Drawings are not to scale. The developer reserves the right to make revisions

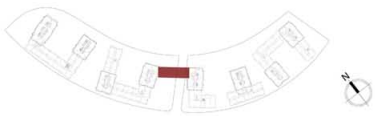


<b>B3-001 TYPE 1-P-A1</b>		<b>B3-004 TYPE 1-P-A1</b>			
APARTMENT AREA	782.00SQ.FT	72.65 SQ.MT	APARTMENT AREA	782.00SQ.FT	72.65 SQ.MT
BALCONY AREA	68.00SQ.FT	6.32 SQ.MT	BALCONY AREA	68.00SQ.FT	6.32 SQ.MT
TOTAL	850.00SQ.FT	78.97 SQ.MT	TOTAL	850.00SQ.FT	78.97 SQ.MT

<b>B3-002 TYPE 2-P-A</b>		<b>B3-003 TYPE 2-P-A</b>			
APARTMENT AREA	1155.00SQ.FT	107.30 SQ.MT	APARTMENT AREA	1155.00SQ.FT	107.30 SQ.MT
BALCONY AREA	112.00SQ.FT	10.41 SQ.MT	BALCONY AREA	112.00SQ.FT	10.41 SQ.MT
TOTAL	1267.00SQ.FT	117.71 SQ.MT	TOTAL	1267.00SQ.FT	117.71 SQ.MT

<b>B3-007 TYPE 2-P-A</b>		<b>B3-006 TYPE 2-P-A</b>			
APARTMENT AREA	1155.00SQ.FT	107.30 SQ.MT	APARTMENT AREA	1155.00SQ.FT	107.30 SQ.MT
BALCONY AREA	112.00SQ.FT	10.41 SQ.MT	BALCONY AREA	112.00SQ.FT	10.41 SQ.MT
TOTAL	1267.00SQ.FT	117.71 SQ.MT	TOTAL	1267.00SQ.FT	117.71 SQ.MT

<b>B3-008 TYPE 2-P-A</b>		<b>B3-005 TYPE 1-P-A1</b>			
APARTMENT AREA	1155.00SQ.FT	107.30 SQ.MT	APARTMENT AREA	782.00SQ.FT	72.65 SQ.MT
BALCONY AREA	112.00SQ.FT	10.41 SQ.MT	BALCONY AREA	68.00SQ.FT	6.32 SQ.MT
TOTAL	1267.00SQ.FT	117.71 SQ.MT	TOTAL	850.00SQ.FT	78.97 SQ.MT



All room dimensions are in metric and measured to structural elements and exclude wall finishes and construction tolerances. Calculation of suite area is measured as the area bounded by the centerline of demising or party walls separating one unit from another unit, the exterior surface of all exterior walls and the exterior surface of the corridor wall on enclosing and abutting the unit. Calculation of Terrace area is measured as the area bounded by the centerlines of demising or party walls separating one unit from another unit, the outermost face of the enclosing guard and the external face of the site abutting the balcony. All materials, dimensions & drawings features and amenities are approximate at the time of printing. Information subject to change without notice. Actual suite areas may vary from the stated area. Drawings are not to scale. The developer reserves the right to make revisions