

# Woodland Crest - Apartment

WOODLĀND CREST

by

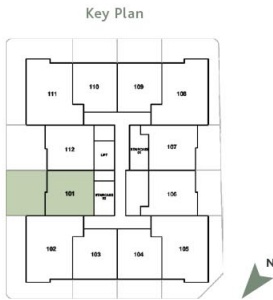
AMIS

1 BEDROOM

UNIT #101

Suite Area	550.25 sq.ft.	51.12 sq.m.
Balcony Area	477.7 sq.ft.	44.38 sq.m.
Total Area	1027.95 sq.ft.	95.5 sq.m.

Key Section



Rooftop
Floor 5
Floor 4
Floor 3
Floor 2
Floor 1
Ground Floor
Basement 1
Basement 2

1 BEDROOM UNIT #101



FLOOR PLAN - 1. All dimensions are in imperial and metric, and measured from finish to finish excluding construction tolerances. 2. All materials, dimensions, and drawings are approximate only. 3. Information is subject to change without notice, at developer's absolute discretion. 4. Actual area may vary from the stated area. 5. Drawings not to scale. 6. All images used are for illustrative purposes only and do not represent the actual size, features, specifications, fittings, and furnishings. 7. The developer reserves the right to make revisions/alterations, at it's absolute discretion, without any liability whatsoever.

WOODLĀND CREST

by

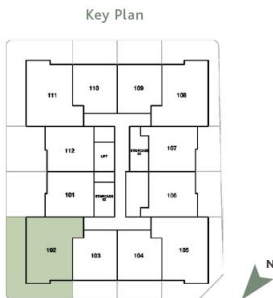
AMIS

2 BEDROOM

UNIT #102

Suite Area	827.1 sq.ft.	76.84 sq.m.
Balcony Area	694.16 sq.ft.	64.49 sq.m.
Total Area	1521.26 sq.ft.	141.33 sq.m.

Key Section



Rooftop
Floor 5
Floor 4
Floor 3
Floor 2
Floor 1
Ground Floor
Basement 1
Basement 2

2 BEDROOM UNIT #102



FLOOR PLAN - 1. All dimensions are in imperial and metric, and measured from finish to finish excluding construction tolerances. 2. All materials, dimensions, and drawings are approximate only. 3. Information is subject to change without notice, at developer's absolute discretion. 4. Actual area may vary from the stated area. 5. Drawings not to scale. 6. All images used are for illustrative purposes only and do not represent the actual size, features, specifications, fittings, and furnishings. 7. The developer reserves the right to make revisions/alterations, at it's absolute discretion, without any liability whatsoever.

# WOODLAND CREST

by

## AMIS

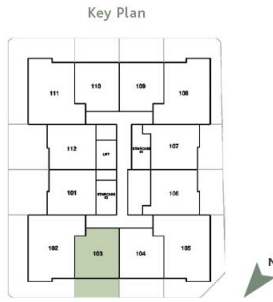
### 1 BEDROOM

#### UNIT #103

Suite Area	528.83 sq.ft.	49.13 sq.m.
Balcony Area	253.49 sq.ft.	23.55 sq.m.
Total Area	782.32 sq.ft.	72.68 sq.m.

#### Key Section

Rooftop
Floor 5
Floor 4
Floor 3
Floor 2
Floor 1
Ground Floor
Basement 1
Basement 2



FLOOR PLAN - 1. All dimensions are in imperial and metric, and measured from finish to finish excluding construction tolerances. 2. All materials, dimensions, and drawings are approximate only. 3. Information is subject to change without notice, at developer's absolute discretion. 4. Actual area may vary from the stated area. 5. Drawings not to scale. 6. All images used are for illustrative purposes only and do not represent the actual size, features, specifications, fittings, and furnishings. 7. The developer reserves the right to make revisions/alterations, at it's absolute discretion, without any liability whatsoever.

# WOODLAND CREST

by

## AMIS

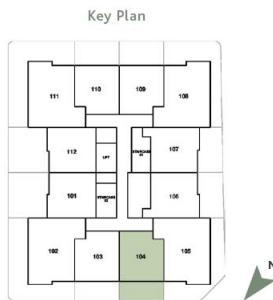
### 1 BEDROOM

#### UNIT #104

Suite Area	528.83 sq.ft.	49.13 sq.m.
Balcony Area	253.49 sq.ft.	23.55 sq.m.
Total Area	782.32 sq.ft.	72.68 sq.m.

#### Key Section

Rooftop
Floor 5
Floor 4
Floor 3
Floor 2
Floor 1
Ground Floor
Basement 1
Basement 2



FLOOR PLAN - 1. All dimensions are in imperial and metric, and measured from finish to finish excluding construction tolerances. 2. All materials, dimensions, and drawings are approximate only. 3. Information is subject to change without notice, at developer's absolute discretion. 4. Actual area may vary from the stated area. 5. Drawings not to scale. 6. All images used are for illustrative purposes only and do not represent the actual size, features, specifications, fittings, and furnishings. 7. The developer reserves the right to make revisions/alterations, at it's absolute discretion, without any liability whatsoever.

# WOODLÄND CREST

by

## AMIS

### 2 BEDROOM

UNIT #105

Suite Area	827.31 sq.ft.	76.86 sq.m.
Balcony Area	446.16 sq.ft.	41.45 sq.m.
Total Area	1273.48 sq.ft.	118.31 sq.m.

#### Key Section

Rooftop
Floor 5
Floor 4
Floor 3
Floor 2
Floor 1
Ground Floor
Basement 1
Basement 2

#### Key Plan



#### 2 BEDROOM UNIT #105



FLOOR PLAN - 1. All dimensions are in imperial and metric, and measured from finish to finish excluding construction tolerances. 2. All materials, dimensions, and drawings are approximate only. 3. Information is subject to change without notice, at developer's absolute discretion. 4. Actual area may vary from the stated area. 5. Drawings not to scale. 6. All images used are for illustrative purposes only and do not represent the actual size, features, specifications, fittings, and furnishings. 7. The developer reserves the right to make revisions/alterations, at it's absolute discretion, without any liability whatsoever.

# WOODLÄND CREST

by

## AMIS

### 1 BEDROOM

UNIT #106

Suite Area	566.18 sq.ft.	52.6 sq.m.
Balcony Area	273.94 sq.ft.	25.45 sq.m.
Total Area	840.12 sq.ft.	78.05 sq.m.

#### Key Section

Rooftop
Floor 5
Floor 4
Floor 3
Floor 2
Floor 1
Ground Floor
Basement 1
Basement 2

#### Key Plan



#### 1 BEDROOM UNIT #106



FLOOR PLAN - 1. All dimensions are in imperial and metric, and measured from finish to finish excluding construction tolerances. 2. All materials, dimensions, and drawings are approximate only. 3. Information is subject to change without notice, at developer's absolute discretion. 4. Actual area may vary from the stated area. 5. Drawings not to scale. 6. All images used are for illustrative purposes only and do not represent the actual size, features, specifications, fittings, and furnishings. 7. The developer reserves the right to make revisions/alterations, at it's absolute discretion, without any liability whatsoever.

# WOODLĀND CREST

by

## AMIS

### 1 BEDROOM

UNIT #107

Suite Area	569.09 sq.ft.	52.87 sq.m.
Balcony Area	263.93 sq.ft.	24.52 sq.m.
Total Area	833.02 sq.ft.	77.39 sq.m.

#### Key Section

Rooftop
Floor 5
Floor 4
Floor 3
Floor 2
Floor 1
Ground Floor
Basement 1
Basement 2

#### Key Plan



#### 1 BEDROOM UNIT #107



FLOOR PLAN - 1. All dimensions are in imperial and metric, and measured from finish to finish excluding construction tolerances. 2. All materials, dimensions, and drawings are approximate only. 3. Information is subject to change without notice, at developer's absolute discretion. 4. Actual area may vary from the stated area. 5. Drawings not to scale. 6. All images used are for illustrative purposes only and do not represent the actual size, features, specifications, fittings, and furnishings. 7. The developer reserves the right to make revisions/alterations, at it's absolute discretion, without any liability whatsoever.

# WOODLĀND CREST

by

## AMIS

### 2 BEDROOM

UNIT #108

Suite Area	824.41 sq.ft.	76.59 sq.m.
Balcony Area	493.74 sq.ft.	45.87 sq.m.
Total Area	1318.15 sq.ft.	122.46 sq.m.

#### Key Section

Rooftop
Floor 5
Floor 4
Floor 3
Floor 2
Floor 1
Ground Floor
Basement 1
Basement 2

#### Key Plan



#### 2 BEDROOM UNIT #108



FLOOR PLAN - 1. All dimensions are in imperial and metric, and measured from finish to finish excluding construction tolerances. 2. All materials, dimensions, and drawings are approximate only. 3. Information is subject to change without notice, at developer's absolute discretion. 4. Actual area may vary from the stated area. 5. Drawings not to scale. 6. All images used are for illustrative purposes only and do not represent the actual size, features, specifications, fittings, and furnishings. 7. The developer reserves the right to make revisions/alterations, at it's absolute discretion, without any liability whatsoever.

# WOODLĀND CREST

by

## AMIS

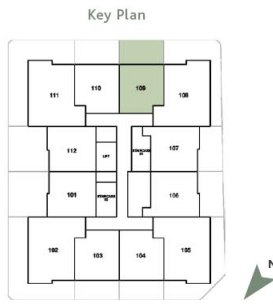
### 1 BEDROOM

UNIT #109

Suite Area	528.83 sq.ft.	49.13 sq.m.
Balcony Area	298.91 sq.ft.	27.77 sq.m.
Total Area	827.74 sq.ft.	76.9 sq.m.

#### Key Section

Rooftop
Floor 5
Floor 4
Floor 3
Floor 2
<b>Floor 1</b>
Ground Floor
Basement 1
Basement 2



#### 1 BEDROOM UNIT #109



FLOOR PLAN - 1. All dimensions are in imperial and metric, and measured from finish to finish excluding construction tolerances. 2. All materials, dimensions, and drawings are approximate only. 3. Information is subject to change without notice, at developer's absolute discretion. 4. Actual area may vary from the stated area. 5. Drawings not to scale. 6. All images used are for illustrative purposes only and do not represent the actual size, features, specifications, fittings, and furnishings. 7. The developer reserves the right to make revisions/alterations, at it's absolute discretion, without any liability whatsoever.

# WOODLĀND CREST

by

## AMIS

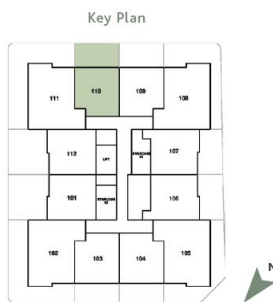
### 1 BEDROOM

UNIT #110

Suite Area	528.83 sq.ft.	49.13 sq.m.
Balcony Area	299.02 sq.ft.	27.78 sq.m.
Total Area	827.85 sq.ft.	76.91 sq.m.

#### Key Section

Rooftop
Floor 5
Floor 4
Floor 3
Floor 2
<b>Floor 1</b>
Ground Floor
Basement 1
Basement 2



#### 1 BEDROOM UNIT #110



FLOOR PLAN - 1. All dimensions are in imperial and metric, and measured from finish to finish excluding construction tolerances. 2. All materials, dimensions, and drawings are approximate only. 3. Information is subject to change without notice, at developer's absolute discretion. 4. Actual area may vary from the stated area. 5. Drawings not to scale. 6. All images used are for illustrative purposes only and do not represent the actual size, features, specifications, fittings, and furnishings. 7. The developer reserves the right to make revisions/alterations, at it's absolute discretion, without any liability whatsoever.

# WOODLĀND CREST

by

## AMIS

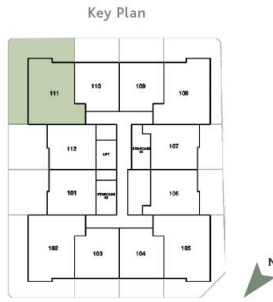
### 2 BEDROOM

UNIT #111

Suite Area	826.24 sq.ft.	76.76 sq.m.
Balcony Area	763.91 sq.ft.	70.97 sq.m.
Total Area	1590.15 sq.ft.	147.73 sq.m.

#### Key Section

Rooftop
Floor 5
Floor 4
Floor 3
Floor 2
Floor 1
Ground Floor
Basement 1
Basement 2



FLOOR PLAN - 1. All dimensions are in imperial and metric, and measured from finish to finish excluding construction tolerances. 2. All materials, dimensions, and drawings are approximate only. 3. Information is subject to change without notice, at developer's absolute discretion. 4. Actual area may vary from the stated area. 5. Drawings not to scale. 6. All images used are for illustrative purposes only and do not represent the actual size, features, specifications, fittings, and furnishings. 7. The developer reserves the right to make revisions/alterations, at it's absolute discretion, without any liability whatsoever.

# WOODLĀND CREST

by

## AMIS

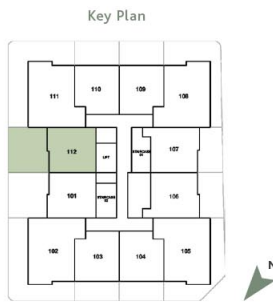
### 1 BEDROOM

UNIT #112

Suite Area	548.96 sq.ft.	51 sq.m.
Balcony Area	477.92 sq.ft.	44.4 sq.m.
Total Area	1026.88 sq.ft.	95.4 sq.m.

#### Key Section

Rooftop
Floor 5
Floor 4
Floor 3
Floor 2
Floor 1
Ground Floor
Basement 1
Basement 2



FLOOR PLAN - 1. All dimensions are in imperial and metric, and measured from finish to finish excluding construction tolerances. 2. All materials, dimensions, and drawings are approximate only. 3. Information is subject to change without notice, at developer's absolute discretion. 4. Actual area may vary from the stated area. 5. Drawings not to scale. 6. All images used are for illustrative purposes only and do not represent the actual size, features, specifications, fittings, and furnishings. 7. The developer reserves the right to make revisions/alterations, at it's absolute discretion, without any liability whatsoever.

# WOODLĀND CREST

by

## AMIS

### 1 BEDROOM

UNIT #201/401

Suite Area	550.25 sq.ft.	51.12 sq.m.
Balcony Area	145.96 sq.ft.	13.56 sq.m.
Total Area	696.21 sq.ft.	64.68 sq.m.

#### Key Section

Rooftop
Floor 5
Floor 4
Floor 3
Floor 2
Floor 1
Ground Floor
Basement 1
Basement 2

#### Key Plan



#### 1 BEDROOM UNIT #201/401



FLOOR PLAN - 1. All dimensions are in imperial and metric, and measured from finish to finish excluding construction tolerances. 2. All materials, dimensions, and drawings are approximate only. 3. Information is subject to change without notice, at developer's absolute discretion. 4. Actual area may vary from the stated area. 5. Drawings not to scale. 6. All images used are for illustrative purposes only and do not represent the actual size, features, specifications, fittings, and furnishings. 7. The developer reserves the right to make revisions/alterations, at it's absolute discretion, without any liability whatsoever.

# WOODLĀND CREST

by

## AMIS

### 2 BEDROOM

UNIT #202/402

Suite Area	826.99 sq.ft.	76.83 sq.m.
Balcony Area	195.15 sq.ft.	18.13 sq.m.
Total Area	1022.14 sq.ft.	94.96 sq.m.

#### Key Section

Rooftop
Floor 5
Floor 4
Floor 3
Floor 2
Floor 1
Ground Floor
Basement 1
Basement 2

#### Key Plan



#### 2 BEDROOM UNIT #202/402



FLOOR PLAN - 1. All dimensions are in imperial and metric, and measured from finish to finish excluding construction tolerances. 2. All materials, dimensions, and drawings are approximate only. 3. Information is subject to change without notice, at developer's absolute discretion. 4. Actual area may vary from the stated area. 5. Drawings not to scale. 6. All images used are for illustrative purposes only and do not represent the actual size, features, specifications, fittings, and furnishings. 7. The developer reserves the right to make revisions/alterations, at it's absolute discretion, without any liability whatsoever.

# WOODLAND CREST

by

## AMIS

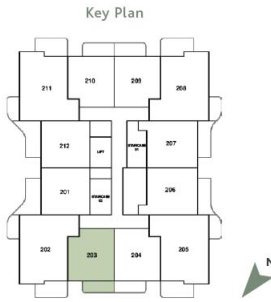
### 1 BEDROOM

UNIT #203/403

Suite Area	528.83 sq.ft.	49.13 sq.m.
Balcony Area	101.83 sq.ft.	9.46 sq.m.
Total Area	630.66 sq.ft.	58.59 sq.m.

#### Key Section

Rooftop
Floor 5
Floor 4
Floor 3
Floor 2
Floor 1
Ground Floor
Basement 1
Basement 2



FLOOR PLAN - 1. All dimensions are in imperial and metric, and measured from finish to finish excluding construction tolerances. 2. All materials, dimensions, and drawings are approximate only. 3. Information is subject to change without notice, at developer's absolute discretion. 4. Actual area may vary from the stated area. 5. Drawings not to scale. 6. All images used are for illustrative purposes only and do not represent the actual size, features, specifications, fittings, and furnishings. 7. The developer reserves the right to make revisions/alterations, at it's absolute discretion, without any liability whatsoever.

# WOODLAND CREST

by

## AMIS

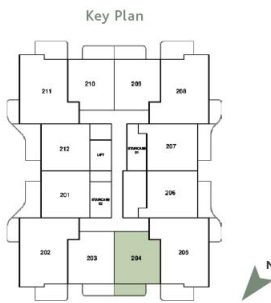
### 1 BEDROOM

UNIT #204/404

Suite Area	528.83 sq.ft.	49.13 sq.m.
Balcony Area	101.83 sq.ft.	9.46 sq.m.
Total Area	630.66 sq.ft.	58.59 sq.m.

#### Key Section

Rooftop
Floor 5
Floor 4
Floor 3
Floor 2
Floor 1
Ground Floor
Basement 1
Basement 2



FLOOR PLAN - 1. All dimensions are in imperial and metric, and measured from finish to finish excluding construction tolerances. 2. All materials, dimensions, and drawings are approximate only. 3. Information is subject to change without notice, at developer's absolute discretion. 4. Actual area may vary from the stated area. 5. Drawings not to scale. 6. All images used are for illustrative purposes only and do not represent the actual size, features, specifications, fittings, and furnishings. 7. The developer reserves the right to make revisions/alterations, at it's absolute discretion, without any liability whatsoever.

# WOODLÄND CREST

by

AMIS

## 2 BEDROOM

UNIT #205/405

Suite Area	827.31 sq.ft.	76.86 sq.m.
Balcony Area	198.27 sq.ft.	18.42 sq.m.
Total Area	1025.59 sq.ft.	95.28 sq.m.

### Key Section

Rooftop
Floor 5
Floor 4
Floor 3
Floor 2
Floor 1
Ground Floor
Basement 1
Basement 2



### 2 BEDROOM UNIT #205/405



FLOOR PLAN - 1. All dimensions are in imperial and metric, and measured from finish to finish excluding construction tolerances. 2. All materials, dimensions, and drawings are approximate only. 3. Information is subject to change without notice, at developer's absolute discretion. 4. Actual area may vary from the stated area. 5. Drawings not to scale. 6. All images used are for illustrative purposes only and do not represent the actual size, features, specifications, fittings, and furnishings. 7. The developer reserves the right to make revisions/alterations, at it's absolute discretion, without any liability whatsoever.

# WOODLÄND CREST

by

AMIS

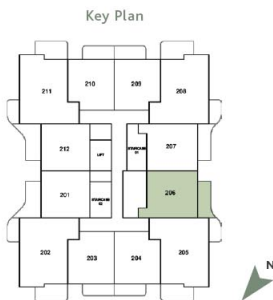
## 1 BEDROOM

UNIT #206/406

Suite Area	566.18 sq.ft.	52.6 sq.m.
Balcony Area	125.94 sq.ft.	11.7 sq.m.
Total Area	692.12 sq.ft.	64.3 sq.m.

### Key Section

Rooftop
Floor 5
Floor 4
Floor 3
Floor 2
Floor 1
Ground Floor
Basement 1
Basement 2



### 1 BEDROOM UNIT #206/406



FLOOR PLAN - 1. All dimensions are in imperial and metric, and measured from finish to finish excluding construction tolerances. 2. All materials, dimensions, and drawings are approximate only. 3. Information is subject to change without notice, at developer's absolute discretion. 4. Actual area may vary from the stated area. 5. Drawings not to scale. 6. All images used are for illustrative purposes only and do not represent the actual size, features, specifications, fittings, and furnishings. 7. The developer reserves the right to make revisions/alterations, at it's absolute discretion, without any liability whatsoever.

# WOODLAND CREST

by

## AMIS

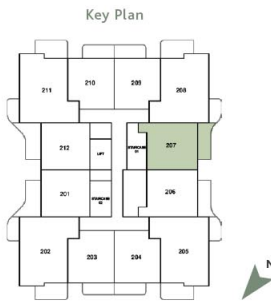
### 1 BEDROOM

UNIT #207/407

Suite Area	569.09 sq.ft.	52.87 sq.m.
Balcony Area	124.32 sq.ft.	11.55 sq.m.
Total Area	693.41 sq.ft.	64.42 sq.m.

#### Key Section

Rooftop
Floor 5
Floor 4
Floor 3
Floor 2
Floor 1
Ground Floor
Basement 1
Basement 2



#### 1 BEDROOM UNIT #207/407



FLOOR PLAN - 1. All dimensions are in imperial and metric, and measured from finish to finish excluding construction tolerances. 2. All materials, dimensions, and drawings are approximate only. 3. Information is subject to change without notice, at developer's absolute discretion. 4. Actual area may vary from the stated area. 5. Drawings not to scale. 6. All images used are for illustrative purposes only and do not represent the actual size, features, specifications, fittings, and furnishings. 7. The developer reserves the right to make revisions/alterations, at it's absolute discretion, without any liability whatsoever.

# WOODLAND CREST

by

## AMIS

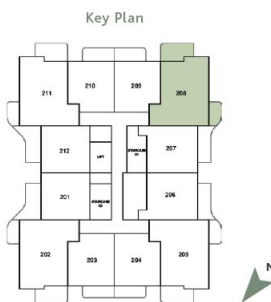
### 2 BEDROOM

UNIT #208/408

Suite Area	824.41 sq.ft.	76.59 sq.m.
Balcony Area	205.59 sq.ft.	19.1 sq.m.
Total Area	1030 sq.ft.	95.69 sq.m.

#### Key Section

Rooftop
Floor 5
Floor 4
Floor 3
Floor 2
Floor 1
Ground Floor
Basement 1
Basement 2



#### 2 BEDROOM UNIT #208/408



FLOOR PLAN - 1. All dimensions are in imperial and metric, and measured from finish to finish excluding construction tolerances. 2. All materials, dimensions, and drawings are approximate only. 3. Information is subject to change without notice, at developer's absolute discretion. 4. Actual area may vary from the stated area. 5. Drawings not to scale. 6. All images used are for illustrative purposes only and do not represent the actual size, features, specifications, fittings, and furnishings. 7. The developer reserves the right to make revisions/alterations, at it's absolute discretion, without any liability whatsoever.

# WOODLĀND CREST

by

## AMIS

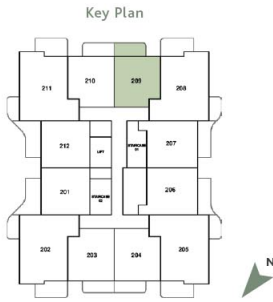
### 1 BEDROOM

UNIT #209/409

Suite Area	528.83 sq.ft.	49.13 sq.m.
Balcony Area	101.93 sq.ft.	9.47 sq.m.
Total Area	630.77 sq.ft.	58.6 sq.m.

#### Key Section

Rooftop
Floor 5
Floor 4
Floor 3
Floor 2
Floor 1
Ground Floor
Basement 1
Basement 2



FLOOR PLAN - 1. All dimensions are in imperial and metric, and measured from finish to finish excluding construction tolerances. 2. All materials, dimensions, and drawings are approximate only. 3. Information is subject to change without notice, at developer's absolute discretion. 4. Actual area may vary from the stated area. 5. Drawings not to scale. 6. All images used are for illustrative purposes only and do not represent the actual size, features, specifications, fittings, and furnishings. 7. The developer reserves the right to make revisions/alterations, at it's absolute discretion, without any liability whatsoever.

# WOODLĀND CREST

by

## AMIS

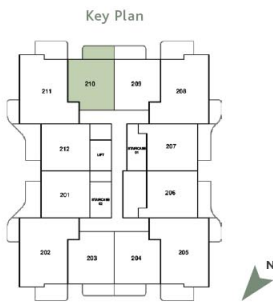
### 1 BEDROOM

UNIT #210/410

Suite Area	528.83 sq.ft.	49.13 sq.m.
Balcony Area	101.93 sq.ft.	9.47 sq.m.
Total Area	630.77 sq.ft.	58.6 sq.m.

#### Key Section

Rooftop
Floor 5
Floor 4
Floor 3
Floor 2
Floor 1
Ground Floor
Basement 1
Basement 2



FLOOR PLAN - 1. All dimensions are in imperial and metric, and measured from finish to finish excluding construction tolerances. 2. All materials, dimensions, and drawings are approximate only. 3. Information is subject to change without notice, at developer's absolute discretion. 4. Actual area may vary from the stated area. 5. Drawings not to scale. 6. All images used are for illustrative purposes only and do not represent the actual size, features, specifications, fittings, and furnishings. 7. The developer reserves the right to make revisions/alterations, at it's absolute discretion, without any liability whatsoever.

# WOODLĀND CREST

by

## AMIS

### 2 BEDROOM

UNIT #211/411

Suite Area	826.24 sq.ft.	76.76 sq.m.
Balcony Area	195.26 sq.ft.	18.14 sq.m.
Total Area	1021.5 sq.ft.	94.9 sq.m.

#### Key Section

Rooftop
Floor 5
Floor 4
Floor 3
Floor 2
Floor 1
Ground Floor
Basement 1
Basement 2



#### 2 BEDROOM UNIT #211/411



FLOOR PLAN - 1. All dimensions are in imperial and metric, and measured from finish to finish excluding construction tolerances. 2. All materials, dimensions, and drawings are approximate only. 3. Information is subject to change without notice, at developer's absolute discretion. 4. Actual area may vary from the stated area. 5. Drawings not to scale. 6. All images used are for illustrative purposes only and do not represent the actual size, features, specifications, fittings, and furnishings. 7. The developer reserves the right to make revisions/alterations, at it's absolute discretion, without any liability whatsoever.

# WOODLĀND CREST

by

## AMIS

### 1 BEDROOM

UNIT #212/412

Suite Area	548.96 sq.ft.	51 sq.m.
Balcony Area	145.85 sq.ft.	13.55 sq.m.
Total Area	694.81 sq.ft.	64.55 sq.m.

#### Key Section

Rooftop
Floor 5
Floor 4
Floor 3
Floor 2
Floor 1
Ground Floor
Basement 1
Basement 2



#### 1 BEDROOM UNIT #212/412



FLOOR PLAN - 1. All dimensions are in imperial and metric, and measured from finish to finish excluding construction tolerances. 2. All materials, dimensions, and drawings are approximate only. 3. Information is subject to change without notice, at developer's absolute discretion. 4. Actual area may vary from the stated area. 5. Drawings not to scale. 6. All images used are for illustrative purposes only and do not represent the actual size, features, specifications, fittings, and furnishings. 7. The developer reserves the right to make revisions/alterations, at it's absolute discretion, without any liability whatsoever.

# WOODLĀND CREST

by

## AMIS

### 1 BEDROOM

UNIT #301

Suite Area	550.25 sq.ft.	51.12 sq.m.
Balcony Area	114.74 sq.ft.	10.66 sq.m.
Total Area	664.99 sq.ft.	61.78 sq.m.

#### Key Section

Rooftop
Floor 5
Floor 4
Floor 3
Floor 2
Floor 1
Ground Floor
Basement 1
Basement 2

#### Key Plan



#### 1 BEDROOM UNIT #301



FLOOR PLAN - 1. All dimensions are in imperial and metric, and measured from finish to finish excluding construction tolerances. 2. All materials, dimensions, and drawings are approximate only. 3. Information is subject to change without notice, at developer's absolute discretion. 4. Actual area may vary from the stated area. 5. Drawings not to scale. 6. All images used are for illustrative purposes only and do not represent the actual size, features, specifications, fittings, and furnishings. 7. The developer reserves the right to make revisions/alterations, at it's absolute discretion, without any liability whatsoever.

# WOODLĀND CREST

by

## AMIS

### 2 BEDROOM

UNIT #302

Suite Area	827.1 sq.ft.	76.84 sq.m.
Balcony Area	203.76 sq.ft.	18.93 sq.m.
Total Area	1030.86 sq.ft.	95.77 sq.m.

#### Key Section

Rooftop
Floor 5
Floor 4
Floor 3
Floor 2
Floor 1
Ground Floor
Basement 1
Basement 2

#### Key Plan



#### 2 BEDROOM UNIT #302



FLOOR PLAN - 1. All dimensions are in imperial and metric, and measured from finish to finish excluding construction tolerances. 2. All materials, dimensions, and drawings are approximate only. 3. Information is subject to change without notice, at developer's absolute discretion. 4. Actual area may vary from the stated area. 5. Drawings not to scale. 6. All images used are for illustrative purposes only and do not represent the actual size, features, specifications, fittings, and furnishings. 7. The developer reserves the right to make revisions/alterations, at it's absolute discretion, without any liability whatsoever.

# WOODLĀND CREST

by

## AMIS

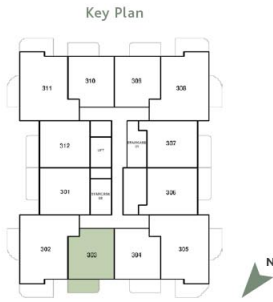
### 1 BEDROOM

UNIT #303

Suite Area	528.83 sq.ft.	49.13 sq.m.
Balcony Area	100.1 sq.ft.	9.3 sq.m.
Total Area	628.94 sq.ft.	58.43 sq.m.

#### Key Section

Rooftop
Floor 5
Floor 4
Floor 3
Floor 2
Floor 1
Ground Floor
Basement 1
Basement 2



FLOOR PLAN - 1. All dimensions are in imperial and metric, and measured from finish to finish excluding construction tolerances. 2. All materials, dimensions, and drawings are approximate only. 3. Information is subject to change without notice, at developer's absolute discretion. 4. Actual area may vary from the stated area. 5. Drawings not to scale. 6. All images used are for illustrative purposes only and do not represent the actual size, features, specifications, fittings, and furnishings. 7. The developer reserves the right to make revisions/alterations, at it's absolute discretion, without any liability whatsoever.

# WOODLĀND CREST

by

## AMIS

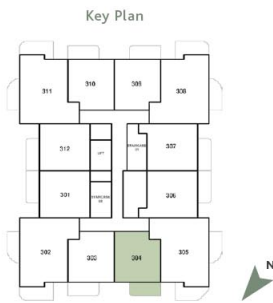
### 1 BEDROOM

UNIT #304

Suite Area	528.83 sq.ft.	49.13 sq.m.
Balcony Area	100.1 sq.ft.	9.3 sq.m.
Total Area	628.94 sq.ft.	58.43 sq.m.

#### Key Section

Rooftop
Floor 5
Floor 4
Floor 3
Floor 2
Floor 1
Ground Floor
Basement 1
Basement 2



FLOOR PLAN - 1. All dimensions are in imperial and metric, and measured from finish to finish excluding construction tolerances. 2. All materials, dimensions, and drawings are approximate only. 3. Information is subject to change without notice, at developer's absolute discretion. 4. Actual area may vary from the stated area. 5. Drawings not to scale. 6. All images used are for illustrative purposes only and do not represent the actual size, features, specifications, fittings, and furnishings. 7. The developer reserves the right to make revisions/alterations, at it's absolute discretion, without any liability whatsoever.

# WOODLAND CREST

by

## AMIS

### 2 BEDROOM

UNIT #305

Suite Area	827.31 sq.ft.	76.86 sq.m.
Balcony Area	198.27 sq.ft.	18.42 sq.m.
Total Area	1025.59 sq.ft.	95.28 sq.m.

#### Key Section

Rooftop
Floor 5
Floor 4
Floor 3
Floor 2
Floor 1
Ground Floor
Basement 1
Basement 2

#### Key Plan



#### 2 BEDROOM UNIT #305



FLOOR PLAN - 1. All dimensions are in imperial and metric, and measured from finish to finish excluding construction tolerances. 2. All materials, dimensions, and drawings are approximate only. 3. Information is subject to change without notice, at developer's absolute discretion. 4. Actual area may vary from the stated area. 5. Drawings not to scale. 6. All images used are for illustrative purposes only and do not represent the actual size, features, specifications, fittings, and furnishings. 7. The developer reserves the right to make revisions/alterations, at it's absolute discretion, without any liability whatsoever.

# WOODLAND CREST

by

## AMIS

### 1 BEDROOM

UNIT #306

Suite Area	566.18 sq.ft.	52.6 sq.m.
Balcony Area	114.74 sq.ft.	10.66 sq.m.
Total Area	680.92 sq.ft.	63.26 sq.m.

#### Key Section

Rooftop
Floor 5
Floor 4
Floor 3
Floor 2
Floor 1
Ground Floor
Basement 1
Basement 2

#### Key Plan



#### 1 BEDROOM UNIT #306



FLOOR PLAN - 1. All dimensions are in imperial and metric, and measured from finish to finish excluding construction tolerances. 2. All materials, dimensions, and drawings are approximate only. 3. Information is subject to change without notice, at developer's absolute discretion. 4. Actual area may vary from the stated area. 5. Drawings not to scale. 6. All images used are for illustrative purposes only and do not represent the actual size, features, specifications, fittings, and furnishings. 7. The developer reserves the right to make revisions/alterations, at it's absolute discretion, without any liability whatsoever.

# WOODLĀND CREST

by

## AMIS

### 1 BEDROOM

UNIT #307

Suite Area	569.09 sq.ft.	52.87 sq.m.
Balcony Area	114.74 sq.ft.	10.66 sq.m.
Total Area	683.83 sq.ft.	63.53 sq.m.

#### Key Section

Rooftop
Floor 5
Floor 4
Floor 3
Floor 2
Floor 1
Ground Floor
Basement 1
Basement 2

#### Key Plan



FLOOR PLAN - 1. All dimensions are in imperial and metric, and measured from finish to finish excluding construction tolerances. 2. All materials, dimensions, and drawings are approximate only. 3. Information is subject to change without notice, at developer's absolute discretion. 4. Actual area may vary from the stated area. 5. Drawings not to scale. 6. All images used are for illustrative purposes only and do not represent the actual size, features, specifications, fittings, and furnishings. 7. The developer reserves the right to make revisions/alterations, at it's absolute discretion, without any liability whatsoever.

# WOODLĀND CREST

by

## AMIS

### 2 BEDROOM

UNIT #308

Suite Area	824.41 sq.ft.	76.59 sq.m.
Balcony Area	206.99 sq.ft.	19.23 sq.m.
Total Area	1031.4 sq.ft.	95.82 sq.m.

#### Key Section

Rooftop
Floor 5
Floor 4
Floor 3
Floor 2
Floor 1
Ground Floor
Basement 1
Basement 2

#### Key Plan



FLOOR PLAN - 1. All dimensions are in imperial and metric, and measured from finish to finish excluding construction tolerances. 2. All materials, dimensions, and drawings are approximate only. 3. Information is subject to change without notice, at developer's absolute discretion. 4. Actual area may vary from the stated area. 5. Drawings not to scale. 6. All images used are for illustrative purposes only and do not represent the actual size, features, specifications, fittings, and furnishings. 7. The developer reserves the right to make revisions/alterations, at it's absolute discretion, without any liability whatsoever.

# WOODLĀND CREST

by

## AMIS

### 1 BEDROOM

UNIT #309

Suite Area	528.83 sq.ft.	49.13 sq.m.
Balcony Area	100.1 sq.ft.	9.3 sq.m.
Total Area	628.94 sq.ft.	58.43 sq.m.

#### Key Section

Rooftop
Floor 5
Floor 4
<b>Floor 3</b>
Floor 2
Floor 1
Ground Floor
Basement 1
Basement 2

#### Key Plan



### 1 BEDROOM UNIT #309



FLOOR PLAN - 1. All dimensions are in imperial and metric, and measured from finish to finish excluding construction tolerances. 2. All materials, dimensions, and drawings are approximate only. 3. Information is subject to change without notice, at developer's absolute discretion. 4. Actual area may vary from the stated area. 5. Drawings not to scale. 6. All images used are for illustrative purposes only and do not represent the actual size, features, specifications, fittings, and furnishings. 7. The developer reserves the right to make revisions/alterations, at it's absolute discretion, without any liability whatsoever.

# WOODLĀND CREST

by

## AMIS

### 1 BEDROOM

UNIT #310

Suite Area	528.83 sq.ft.	49.13 sq.m.
Balcony Area	100.1 sq.ft.	9.3 sq.m.
Total Area	628.94 sq.ft.	58.43 sq.m.

#### Key Section

Rooftop
Floor 5
Floor 4
<b>Floor 3</b>
Floor 2
Floor 1
Ground Floor
Basement 1
Basement 2

#### Key Plan



### 1 BEDROOM UNIT #310



FLOOR PLAN - 1. All dimensions are in imperial and metric, and measured from finish to finish excluding construction tolerances. 2. All materials, dimensions, and drawings are approximate only. 3. Information is subject to change without notice, at developer's absolute discretion. 4. Actual area may vary from the stated area. 5. Drawings not to scale. 6. All images used are for illustrative purposes only and do not represent the actual size, features, specifications, fittings, and furnishings. 7. The developer reserves the right to make revisions/alterations, at it's absolute discretion, without any liability whatsoever.

# WOODLĀND CREST

by

## AMIS

### 2 BEDROOM

UNIT #311

Suite Area	826.24 sq.ft.	76.76 sq.m.
Balcony Area	204.08 sq.ft.	18.96 sq.m.
Total Area	1030.32 sq.ft.	95.72 sq.m.

#### Key Section

Rooftop
Floor 5
Floor 4
Floor 3
Floor 2
Floor 1
Ground Floor
Basement 1
Basement 2

#### Key Plan



#### 2 BEDROOM UNIT #311



FLOOR PLAN - 1. All dimensions are in imperial and metric, and measured from finish to finish excluding construction tolerances. 2. All materials, dimensions, and drawings are approximate only. 3. Information is subject to change without notice, at developer's absolute discretion. 4. Actual area may vary from the stated area. 5. Drawings not to scale. 6. All images used are for illustrative purposes only and do not represent the actual size, features, specifications, fittings, and furnishings. 7. The developer reserves the right to make revisions/alterations, at it's absolute discretion, without any liability whatsoever.

# WOODLĀND CREST

by

## AMIS

### 1 BEDROOM

UNIT #312

Suite Area	548.96 sq.ft.	51 sq.m.
Balcony Area	114.74 sq.ft.	10.66 sq.m.
Total Area	663.7 sq.ft.	61.66 sq.m.

#### Key Section

Rooftop
Floor 5
Floor 4
Floor 3
Floor 2
Floor 1
Ground Floor
Basement 1
Basement 2

#### Key Plan



#### 1 BEDROOM UNIT #312



FLOOR PLAN - 1. All dimensions are in imperial and metric, and measured from finish to finish excluding construction tolerances. 2. All materials, dimensions, and drawings are approximate only. 3. Information is subject to change without notice, at developer's absolute discretion. 4. Actual area may vary from the stated area. 5. Drawings not to scale. 6. All images used are for illustrative purposes only and do not represent the actual size, features, specifications, fittings, and furnishings. 7. The developer reserves the right to make revisions/alterations, at it's absolute discretion, without any liability whatsoever.

# WOODLÄND CREST

by

## AMIS

### 2 BEDROOM

UNIT #501

Suite Area	923.65 sq.ft.	85.81 sq.m.
Balcony Area	751.11 sq.ft.	69.78 sq.m.
Total Area	1674.76 sq.ft.	155.59 sq.m.

#### Key Section

Roof top
Floor 5
Floor 4
Floor 3
Floor 2
Floor 1
Ground Floor
Basement 1
Basement 2



### 2 BEDROOM UNIT #501



FLOOR PLAN - 1. All dimensions are in imperial and metric, and measured from finish to finish excluding construction tolerances. 2. All materials, dimensions, and drawings are approximate only. 3. Information is subject to change without notice, at developer's absolute discretion. 4. Actual area may vary from the stated area. 5. Drawings not to scale. 6. All images used are for illustrative purposes only and do not represent the actual size, features, specifications, fittings, and furnishings. 7. The developer reserves the right to make revisions/alterations, at it's absolute discretion, without any liability whatsoever.

# WOODLÄND CREST

by

## AMIS

### 2 BEDROOM

UNIT #502

Suite Area	895.56 sq.ft.	83.2 sq.m.
Balcony Area	720.43 sq.ft.	66.93 sq.m.
Total Area	1615.99 sq.ft.	150.13 sq.m.

#### Key Section

Roof top
Floor 5
Floor 4
Floor 3
Floor 2
Floor 1
Ground Floor
Basement 1
Basement 2



### 2 BEDROOM UNIT #502



FLOOR PLAN - 1. All dimensions are in imperial and metric, and measured from finish to finish excluding construction tolerances. 2. All materials, dimensions, and drawings are approximate only. 3. Information is subject to change without notice, at developer's absolute discretion. 4. Actual area may vary from the stated area. 5. Drawings not to scale. 6. All images used are for illustrative purposes only and do not represent the actual size, features, specifications, fittings, and furnishings. 7. The developer reserves the right to make revisions/alterations, at it's absolute discretion, without any liability whatsoever.